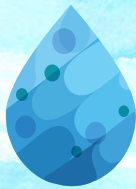




MASSACHUSETTS  
WATER RESOURCES  
AUTHORITY 2020  
DRINKING WATER  
TEST RESULTS



# WATER IS ESSENTIAL!

This report contains very important information about your drinking water. Please translate it, or speak with someone who understands it.

Si usted desea obtener una copia de este reporte en español, llámenos al teléfono 617-788-1190.

La relazione contiene importanti informazioni sulla qualità dell'acqua della Comunità. Tra-durla o parlane con un amico che lo comprenda.

O relatório contém informações importantes sobre a qualidade da água da comunidade. Tra-duza-o ou peça a alguém que o ajude a entendê-lo melhor.

Sprawozdanie zawiera ważne informacje na temat jakości wody w Twojej miejscowości. Poproś kogoś o przeliumaczenie go lub porozmawiaj z osobą która je dobrze rozumie.

يحتوي هذا التقرير على معلومات هامة عن نوعية مياه الشرب في منطقتك. يرجى ترجمته أو ابحث التقرير مع صديقك يفهم هذه المعلومات جيداً.

Η κατάσταση αναφοράς παρουσιάζει αποδοχές πληρότητας για το ποσοστό νερού στις Προκαταβόλες να το μεταβράσετε ή να το αζολοποιείτε με καποιον που το καταλαβαίνει απολυτως.

Im Bericht steht wichtige Information über die Qualität des Wassers Ihrer Gemeinschaft. Der Bericht soll übersetzt werden, oder sprechen Sie mit einem Freund, der ihn gut versteht.

这份报告中有些重要的信息。讲到关于您所在社区的水的品质。请您找人翻译一下，或者请能看得懂这份报告的朋友给您解释一下。

この資料には、あなたの飲料水についての大切な情報が書かれています。内容をよく理解するために、日本語に翻訳して読むか説明を受けてください。

इस रिपोर्ट में 'पाने के पानी' के विषय पर बहुत जरूरी जानकारी दी गई है। कृपया हमका अनुवाद कोशिश करें, या किसी जल्दकार से इस बारे में पूछें।

របាយការណ៍នេះមានព័ត៌មានសំខាន់ៗស្តីពីគុណភាពទឹក។ ជួយមិត្តជិតស្និទ្ធប្រាប់របស់លោកអ្នកឬមិត្តភក្តិជាមួយអ្នកដែលចេះបកប្រែភាសាខ្មែរ។

이 보고서는 귀하의 거주하는 지역의 수질에 관한 중요한 정보가 들어 있습니다. 이것을 번역하거나 충분히 이해하시는 친구와 상의하십시오.

Bản báo cáo có ghi những chi tiết quan trọng về phẩm chất nước trong cộng đồng quý vị. Hãy nhờ người thông dịch, hoặc hỏi một người bạn biết rõ về vấn đề này.

Ce rapport contient des informations importantes à propos de votre eau potable. Demander à quelqu'un de traduire ces informations pour vous ou discuter avec une personne qui comprend ces informations.



Massachusetts Water Resources Authority And Your Local Water Department

## Where To Go For Further Information

Massachusetts Water Resources Authority (MWRA)	<a href="http://www.mwra.com">www.mwra.com</a>	617-242-5323
Department of Conservation and Recreation (DCR)	<a href="http://www.mass.gov/dcr/watersupply">www.mass.gov/dcr/watersupply</a>	617-626-1250
Massachusetts Dept. of Public Health (DPH)	<a href="http://www.mass.gov/dph">www.mass.gov/dph</a>	617-624-6000
Massachusetts Dept. of Environmental Protection	<a href="http://www.mass.gov/dcr/watersupply">www.mass.gov/dcr/watersupply</a>	617-292-5500
US Centers for Disease Control & Prevention (CDC)	<a href="http://www.cdc.gov">www.cdc.gov</a>	800-232-4636
List of State Certified Water Quality Testing Labs	<a href="http://www.mwra.com/testinglabs.html">www.mwra.com/testinglabs.html</a>	617-242-5323
Source Water Assessment and Protection Reports	<a href="http://www.mwra.com/sourcewater.html">www.mwra.com/sourcewater.html</a>	617-242-5323
Information on Water Conservation	<a href="http://www.mwra.com/conservation.html">www.mwra.com/conservation.html</a>	617-242-SAVE

## Public Meetings

MWRA Board of Directors	<a href="http://www.mwra.com/boardofdirectors.html">www.mwra.com/boardofdirectors.html</a>	617-788-1117
MWRA Advisory Board	<a href="http://www.mwraadvisoryboard.com">www.mwraadvisoryboard.com</a>	617-788-2050
Water Supply Citizens Advisory Committee	<a href="http://www.mwra.com/wscac.html">www.mwra.com/wscac.html</a>	413-213-0454

**For A Larger Print Version, Call 617-242-5323.**

This report is required under the Federal Safe Drinking Water Act. MWRA PWS ID# 6000000





**MWRA BOARD OF DIRECTORS**

Kathleen A. Theoharides,  
Chair

John J. Carroll,  
Vice Chair

Andrew M. Pappastergion,  
Secretary

Christopher Cook

Paul E. Flanagan

Joseph C. Foti

Brian Peña

Henry F. Vitale

Patrick Walsh

John J. Walsh

Jennifer L. Wolowicz

Dear Customer,

This report brings you the results of our annual water quality testing. While 2020 was a year filled with uncertainty, one thing remained constant: the quality of your drinking water was excellent. MWRA takes hundreds of thousands of tests each year, and for 2020, we again met every federal and state drinking water standard.

As providers of essential services, the women and men of MWRA have been on the job every day during the pandemic to make sure that the customers in our service area received uninterrupted delivery of safe drinking water.

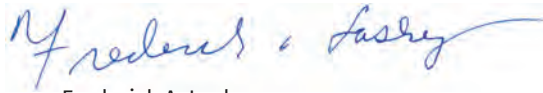
Our reservoirs have ample supplies to meet the demands of our service area. However, water is the most precious resource and we encourage everyone to save water wherever possible. You can find tips on how to conserve water on our website at [www.mwra.com](http://www.mwra.com).

System-wide, we were again below the Lead Action Level. Lead continues to be a priority for us and our member communities. To date, 11 communities have utilized over \$17 million through our zero-interest loans to remove lead service lines. Please read your community's letter on page 7 for more information on your local water system.

PFAS, or 'forever chemicals' have been in the news a lot lately. As expected, given our well-protected sources, our test results easily meet the newly issued Massachusetts Department of Environmental Protection standards. No changes in our treatment are needed, and we continue to monitor this important issue.

I hope you will take a few moments to read this report. We have great confidence in the water we deliver to your homes and businesses and we want you to as well. Please contact us if you have any questions or comments about your water quality, or any of MWRA's programs.

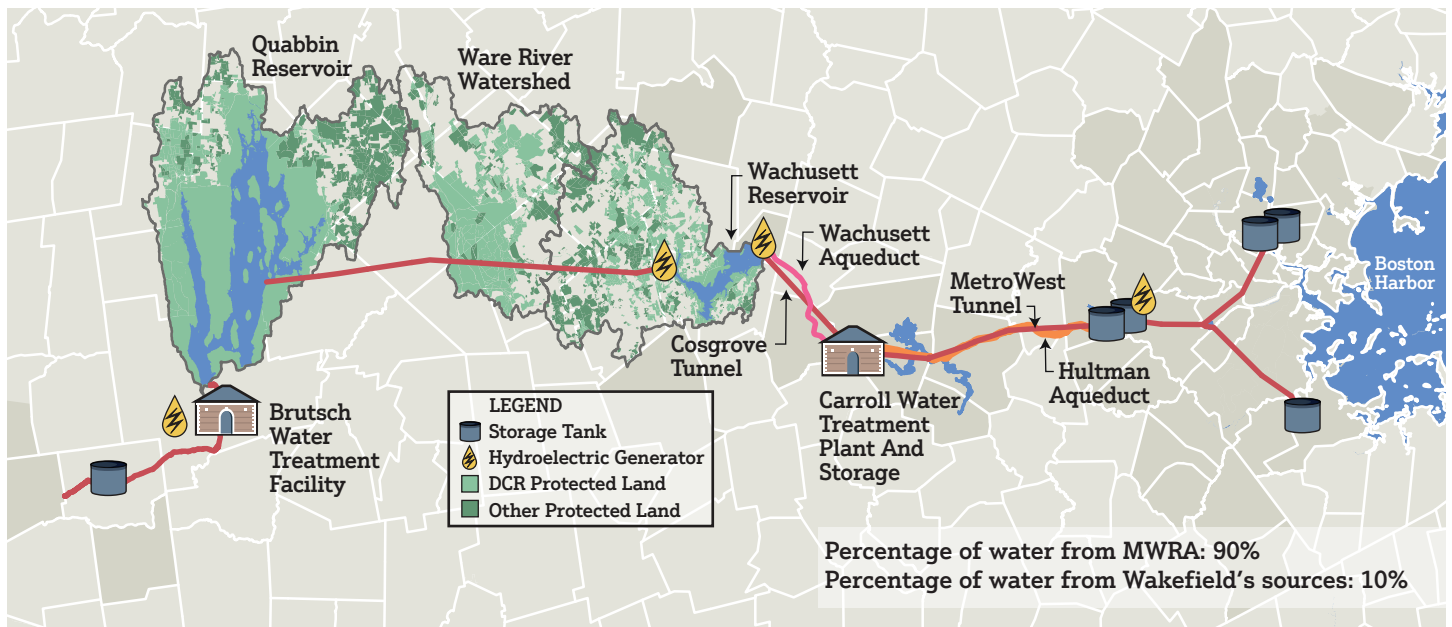
Sincerely,



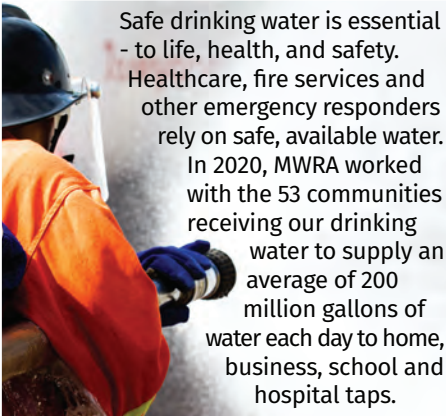
Frederick A. Laskey  
Executive Director

For more information on MWRA and its Board of Directors, visit [www.mwra.com](http://www.mwra.com).

**YOUR WATER COMES FROM MWRA AND LOCAL SOURCES IN WAKEFIELD**



# Safe Drinking Water Is Essential



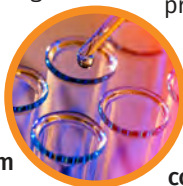
Safe drinking water is essential - to life, health, and safety. Healthcare, fire services and other emergency responders rely on safe, available water. In 2020, MWRA worked with the 53 communities receiving our drinking water to supply an average of 200 million gallons of water each day to home, business, school and hospital taps.

## Essential Information About Your Water

This 2020 Water Quality Report will provide you with essential information on your drinking water-how we test, treat, and ensure the safety of your water-every day, without interruption. MWRA ensures the quality of your water through a comprehensive protection, treatment, distribution and system-wide evaluation process that ensures the safety of the water you receive.

## MWRA's Water Sources

MWRA's efforts to protect your drinking water start 65 miles west of Boston, at the Quabbin Reservoir, and the Wachusett Reservoir, 35 miles west of Boston. The Ware River also provides additional water when needed. **Your water also comes from local supplies. See page 7 for more information.**



The Quabbin and Wachusett watersheds—the areas that drain water into the reservoirs—are naturally protected. Over 85% of the watersheds are covered in

forests and wetlands, which help filter the rain and snow as they enter the streams that flow to the reservoirs. This water comes in contact with soil, rock, plants, and other material as it follows its natural path to the reservoirs. While this process helps to clean the water, it can also dissolve and carry very small amounts of material into the reservoir. Minerals from soil and rock do not typically cause problems in the water. Water can also transport contaminants, including bacteria, viruses or other potential pathogens, from human and animal activity. Test results show few contaminants are found in the reservoir water. The few that are detected are in very small amounts that are well below EPA's standards.

## Water Source Protection

A Source Water Assessment Program report was developed by the Department of Environmental Protection (DEP), for the Quabbin and Wachusett Reservoirs. The DEP report commends the Department of Conservation and Recreation (DCR), and MWRA for our source water protection plans, and states that our “watershed protection programs are very successful and greatly reduce the actual risk of contamination.” MWRA and DCR follow the report recommendations to maintain the pristine watershed areas. **Your water also comes from local supplies that have a separate report.**

## Testing from Forest to Faucet

MWRA and your community work together to test your drinking water frequently,



from the water's source in the Quabbin Reservoir to your kitchen or workplace tap. MWRA laboratories conduct hundreds of thousands of tests every year for 120 potential contaminants. You can learn more about our testing for potential waterborne contaminants on our website at [www.mwra.com](http://www.mwra.com). The 2020 water quality tests are shown below. These results confirm the quality and safety of the water delivered each day to your community, and it tastes great right from the start.

Turbidity (or cloudiness of the water), for example, is one measure of overall water quality. All water must be below 5 NTU (Nephelometric Turbidity Units) and water can only be above 1 NTU if it does not interfere with effective disinfection. In 2020, typical levels in the Wachusett Reservoir were 0.33 NTU, with the highest level of turbidity at 0.67 NTU, well below the standard.

MWRA also tests reservoir water for pathogens such as fecal coliform bacteria, and the parasites *Cryptosporidium* and *Giardia*, that can enter the water from animal or human waste. All test results in 2020 were well within state and federal testing and treatment standards. For more information, please visit [www.mwra.com](http://www.mwra.com).

## TEST RESULTS - AFTER MWRA WATER TREATMENT (LOCAL RESULTS ON PAGE 7)

Compound	Units	(MCL) Highest Level Allowed	(We Found) Detected Level-Average	Range Of Detections	(MCLG) Ideal Goal	Violation	How It Gets In The Water
Barium	ppm	2	0.009	0.009-0.01	2	No	Common mineral in nature
Monochloramine	ppm	4-MRDL	2.01	0.05-3.7	4-MRDLG	No	Water disinfectant
Fluoride	ppm	4	0.72	0.10-0.82	4	No	Additive for dental health
Nitrate <sup>^</sup>	ppm	10	0.095	0.04-0.095	10	No	Atmospheric deposition
Total Trihalomethanes	ppb	80	15.4	4.9-23.1	NS	No	Byproduct of water disinfection
Haloacetic Acids-5	ppb	60	15.7	ND-17.4	NS	No	Byproduct of water disinfection

**KEY:** MCL=Maximum Contaminant Level. The highest level of a contaminant allowed in water. MCLs are set as close to the MCLGs as feasible using the best available technology. MCLG=Maximum Contaminant Level Goal. The level of contaminant in drinking water below which there is no known or expected risk to health. MCLGs allow for a margin of safety. MRDL=Maximum Residual Disinfectant Level. The highest level of a disinfectant allowed in drinking water. There is convincing evidence that addition of a disinfectant is necessary for control of microbial contaminants. MRDLG=Maximum Residual Disinfectant Level Goal. The level of a drinking water disinfectant below which there is no known or expected health risk. MRDLGs do not reflect the benefits of the use of disinfectants to control microbial contamination. ppm=parts per million ppb=parts per billion NS=no standard ND=non-detect <sup>^</sup>=As required by DEP, the maximum result is reported for nitrate, not the average.

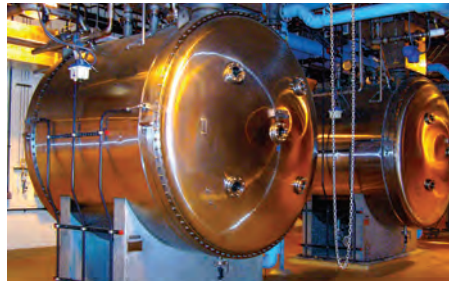
# Essential Water System Protection

MWRA and DCR protect the water you drink by testing, treating and protecting water quality. From the streams in the watershed, through hundreds of miles of MWRA and thousands of miles of local pipes all the way to your home. MWRA works with the Department of Conservation and Recreation (DCR) to protect 150,000 acres of permanently protected forested land and wetlands in the watershed. DCR maintains a nationally recognized protection program that includes extensive water quality testing, stormwater controls, water quality maintenance and development regulations.

MWRA maintains a state of the art water monitoring system that operates continuously—24 hours a day, 7 days a week—before and after treatment. This system helps us confirm the water is free of contaminants, and allows MWRA to rapidly respond to any changes in water quality.

MWRA’s modern treatment processes make sure your water is safe, fresh, and tastes great. Part of the reason that the water

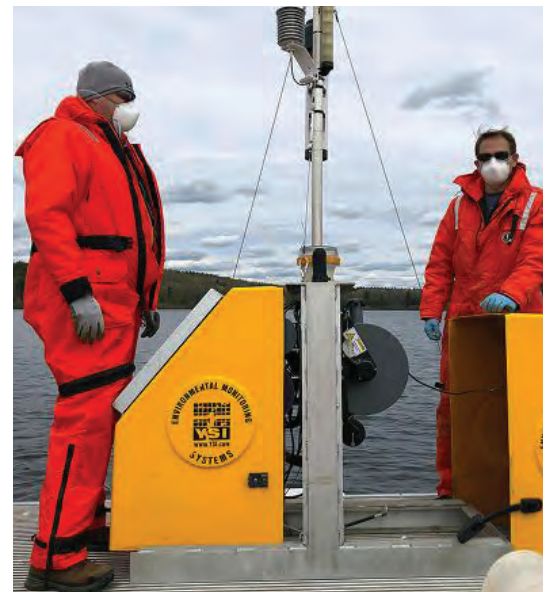
tastes so good is MWRA’s advanced water treatment at the John J. Carroll Water Treatment Plant in Marlborough. First, your water is treated with ozone—produced by pure oxygen. Ozone disinfects the water, killing bacteria, viruses and other organisms. It also improves water clarity and makes the water taste better. Next we use ultraviolet light (UV) disinfection, further improving the quality of the water. UV light is essentially a more powerful form of the natural disinfection from sunlight, and further ensures that any pathogens in the water from our reservoirs are rendered harmless.



In addition, fluoride is added to promote dental health, and the water chemistry is adjusted to reduce corrosion of home plumbing. Last, we add monochloramine (combining chlorine and ammonia), a mild and long-lasting disinfectant to provide continuing protection of the water as it travels through miles of pipelines to your home. **Local treatment information on page 7.**

### Ensuring System Redundancy for Continuing Service

Our goal is to provide a continuous supply of safe, clean water to every person and



organization in the MWRA service area. Redundant pipelines and tunnels allow inspection and maintenance of key facilities while ensuring uninterrupted service. Construction of a second pipeline to provide more reliable service to communities to the south is ongoing. Construction is now underway to repair and improve the Weston Aqueduct Supply Main 3 in Weston, Waltham, Belmont, Arlington and Medford. And planning and environmental review for two new tunnels north and south of Boston that will provide redundancy for the entire region is now well underway.

### Distribution System—Pipeline Rehabilitation

MWRA continues to rehabilitate and replace pipelines throughout the distribution system to improve both reliability and water quality. MWRA also provides zero-interest loans to customer communities for local pipeline projects. In 2020, \$36 million was loaned to communities to fund 24 community projects for the replacement or rehabilitation of older unlined pipes or replacement of lead service lines.



### FACTS ABOUT SODIUM

Sodium in water contributes only a small fraction of a person’s overall sodium intake (less

than 5%). MWRA tests for sodium monthly and the highest level found was 42.7 mg/L (about 10 mg per 8 oz. glass). This level would be considered Very Low Sodium by the Food and Drug Administration (FDA).



MWRA’s John J. Carroll Water Treatment Plant



### MAINTAINING SERVICE DURING COVID-19 PANDEMIC

MWRA’s emergency planning and commitment to providing reliable service allowed us to keep the water and sewer systems working continuously over the past year. We activated our long-standing pandemic response plan, protected our staff with changed work rules and social distancing, and met all drinking water testing and safety requirements.

# Essential Facts—Lead In Drinking Water

## Why is lead in drinking water important?

Lead affects young children, and may cause damage to the brain, slow growth and development, and cause learning and behavior problems. Preventing lead exposure is particularly important if a pregnant woman or child lives in your home or apartment. Lead can also impact the health of your entire family. While lead poisoning frequently comes from exposure to lead paint dust or chips, lead in drinking water can also contribute to chronic, total lead exposure.

Lead in your home plumbing or a lead service line can contribute to elevated lead levels in the water you drink. To lower your family's exposure to lead in drinking water, review the information on this page.

## Important Lead Information From EPA

If present, elevated levels of lead can cause serious health problems, especially for pregnant women and young children. Lead in

drinking water comes primarily from materials and components associated with service lines and home plumbing. MWRA is responsible for providing high quality drinking water, but cannot control the variety of materials used in plumbing components. If your water has been sitting for several hours, you can minimize the potential for lead exposure by flushing your tap for 30 seconds to 2 minutes before using water for drinking or cooking. If you are concerned about lead in your water, you may wish to have your water tested. Information on lead in drinking water, testing methods, and steps you can take to minimize exposure is available from the Safe Drinking Water Hotline at 1-800-425-4791 or [www.epa.gov/safewater/lead](http://www.epa.gov/safewater/lead).

## How Lead Can Enter Your Water

MWRA water is lead-free when it leaves our reservoirs, and MWRA and local pipes that carry the water to your community are made mostly of iron and steel, and don't add lead to the water. Lead can enter your tap water through pipes in your home, your service line (the line that connects your home to the water main) if it is made of lead, lead solder used in plumbing, or from some brass fixtures.

Corrosion or wearing away of lead-based materials can add lead to tap water, especially if water sits for a long time in the

## 3 WAYS TO REDUCE LEAD IN YOUR WATER

- Remove lead service lines to your home
- Run your drinking water before using
- Use a filter certified to remove lead



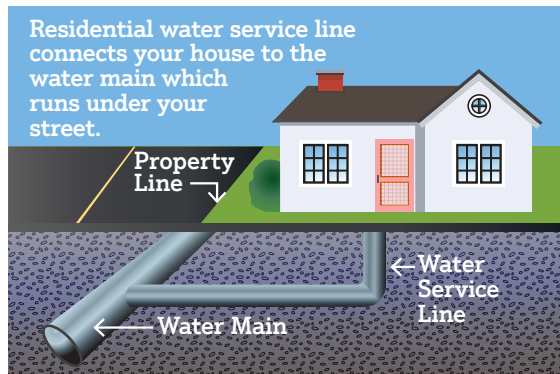
pipes before it is used. MWRA's corrosion control program helps limit the amount of lead in your water. In 1996, MWRA began adding sodium carbonate and carbon dioxide to adjust the water's pH and buffering capacity. This treatment makes the water less corrosive and reduces leaching of lead into drinking water. Lead levels found in sample tests of tap water have dropped by about 90% since this treatment change. Learn more about lead in drinking water at [www.mwra.com](http://www.mwra.com).

## MWRA Meets Lead Standard In 2020

Under EPA rules, MWRA and your local water department must test tap water each year in a sample of homes likely to have high lead levels—those with lead solder or lead service lines. The EPA rule requires that 9 out of 10, or 90% of the sampled homes must have lead levels below the Action Level of 15 ppb in their drinking water.

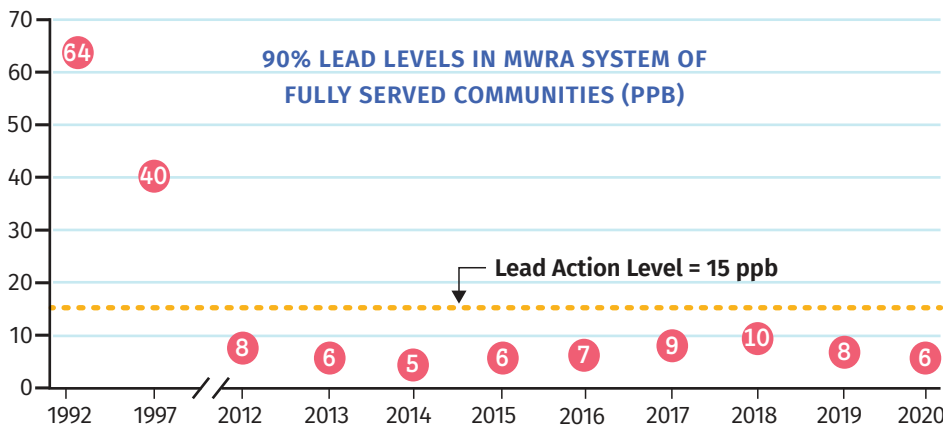
All sampling rounds over the past 17 years have been below the EPA Action Level. Of the 3,482 samples taken in the last 7 years, 96.7% were below the Action Level. Results for the 450 samples taken in September 2020 are shown in the table. Nine out of ten homes were below 6.5 ppb—well below the Action Level of 15 ppb.

**Your community letter on page 7 will provide you with local results and more information.**



LEAD AND COPPER RESULTS-2020	90% Value	Target Action Level	Ideal Goal (MCLG)	#Homes Above AL/ #Homes Tested
Lead (ppb)	6.47	15 ppb	0	16/450
Copper (ppb)	105	1300 ppb	1300	0/450

**KEY: AL=Action Level** - The concentration of a contaminant which, if exceeded, triggers treatment or other requirements which a water system must follow.



**WHAT IS AN ACTION LEVEL?**  
An Action Level is the amount of lead that requires action to reduce exposure. If your home or school's drinking water

sample is above the Lead Action Level, additional steps to reduce the level of lead may be required. If more than 10% of your community's samples were over the Lead Action Level (15 ppb), your local water department is taking action to address the problem. See page 7.

# Ways To Reduce Lead In Your Water



## Do I Have a Lead Service Line?

A service line connects your building's plumbing to the water main in your street. In some older buildings, the service line is made of lead and can add significant amounts of lead to your drinking water. Replacing the lead service line can eliminate a major source of lead in your drinking water.

Contact your local water department to find out if you have a lead service line. You can also scratch the pipe entering your home near your water meter with a key. Lead pipes will show a dull grey or silver color, while copper pipes will not. For more information go to [www.mwra.com](http://www.mwra.com).

## MWRA Funding to Replace Lead Service Lines

MWRA and its Advisory Board offer zero-interest loans to customer communities for full lead service line replacement projects. Each MWRA community can develop its own local plan, and many communities have already taken steps to remove lead service lines. To find out more, contact your local water department.

## How to Test Your Drinking Water

Interested in testing your home drinking water for lead? Contact your local water department about testing for lead in your drinking water. Or, go to the list of certified laboratories and sampling instructions available on the lead testing page at [www.mwra.com](http://www.mwra.com). You may also call MWRA at 617-242-5323 for more information.



## Free MWRA Testing for Schools and Child Care Facilities

Children consume much of their drinking water at school and daycare. The plumbing in some schools and child care facilities can contain lead, and contribute to total lead exposure. MWRA, in collaboration with MassDEP, has provided no-cost lab analysis and technical assistance for schools and child care centers across all of MWRA's water communities since 2016. Water samples are tested at our laboratory and the results are provided to the local school, health and water departments. Since the start of this program in 2016, MWRA has completed over 38,000 tests from 506 schools across 44 communities. Results are available at: [www.mass.gov/dep](http://www.mass.gov/dep) (search for "lead in schools"). Results may also be available from your local school department or water department.



## REDUCE EXPOSURE TO LEAD IN YOUR HOME

- Lead can enter your drinking water through pipes in your home, or your lead service line (that connects your home to the water main).
- Find out how to identify and remove a lead service line if your home has one. Contact your local water department about removal options.
- Any time water has not been used for more than 6 hours, run any faucet used for drinking or cooking until after the water becomes cold.



- Let the water run before using it: fresh water is better than stale. To save water, fill a pitcher with fresh water and place in the refrigerator for future use.
- Never use hot water from the faucet for drinking or cooking, especially when making baby formula or other food for infants or young children.
- Remove loose lead solder and debris. Every few months remove the aerator from each faucet in your home and flush the pipes for 3 to 5 minutes.
- Be careful of places where you may find lead in or near your home. Paint, soil, dust and pottery may contain lead. Call the Massachusetts Department of Public Health (MDPH) at 1-800-532-9571 or 1-800-424-LEAD for information on health and lead.

## WATER SERVICE LINES – OLD AND NEW

You can identify lead service line by carefully scratching with a key.

New copper service line. →



# Essential Information On Your Water

## Partners In Testing For Bacteria

MWRA and local water departments test 300 to 500 water samples each week for total coliform bacteria. Total coliform bacteria can come from the intestines of warm-blooded animals, or can be found in soil, plants, or other places. Most of the time, they are not harmful. However, their presence could signal that harmful bacteria from fecal waste may be there as well. If total coliform is detected in more than 5% of samples in a month, the water system is required to investigate the possible source and fix any identified problems. If a water sample does test positive, we run more specific tests for *E. coli*, which is a bacteria found in human and animal fecal waste and may cause illness. **If your community was required to do an investigation, or found *E. coli*, it will be in the letter from your community on page 7.**



level (MCL) of 20 parts per trillion. See [www.mwra.com](http://www.mwra.com).

## Important Research For New Regulations

MWRA works with EPA and health research organizations to help define new national drinking water standards by collecting data on water contaminants that are not yet regulated. With our well-protected sources, very few of these potential contaminants are found in MWRA water. Information on this testing, as well as other water quality data, including information on PFAS, disinfection byproducts, *Giardia* and *Cryptosporidium*, and other contaminants can be found at [www.mwra.com](http://www.mwra.com).

## Contaminants in Bottled Water and Tap Water

Drinking water, including bottled water, may reasonably be expected to contain at least small amounts of some contaminants. The presence of contaminants does not necessarily indicate that water poses a health risk. More information about contaminants and potential health effects can be obtained by calling the EPA's Safe Drinking Water Hotline (1-800-426-4791) or MWRA. In order to ensure that tap water is safe to drink, the Massachusetts DEP and EPA prescribe regulations which limit the amount of certain contaminants in water provided by public water systems. U.S. Food and Drug Administration (FDA) and the Massachusetts Department of Public Health (MDPH) regulations establish limits for contaminants in bottled water, which must provide the same protection for public health.

## Important Health Information: Drinking Water and People with Weakened Immune Systems

Some people may be more vulnerable to contaminants in drinking water than the general population. Immuno-compromised persons such as persons with cancer undergoing chemotherapy, persons who have undergone organ transplants, people with HIV/AIDS or other immune system disorders, some elderly, and infants, can be particularly at risk from infections. These people should seek advice about drinking water from their health care providers. EPA/CDC guidelines on appropriate means to lessen the risk of infection by *Cryptosporidium* and other microbial contaminants are available from the EPA's Safe Drinking Water Hotline (1-800-426-4791).



## CONSERVATION IS ESSENTIAL

Some parts of the state are experiencing drought conditions. Although the Quabbin Reservoir is well within the "Normal" operating range for this time of year, MWRA urges its customers to conserve water wherever possible. Our website has many tips on how to save water both indoors and outdoors. Every drop counts!

## Monitoring Water For PFAS

PFAS compounds, used since the 1950s for everything from stain and water proofing to firefighting, continue to be an environmental concern. In 2020, the Department of Environmental Protection (MassDEP) published a drinking water standard for PFAS. Tests of MWRA water showed only trace amounts of these compounds, well below the new state maximum contaminant



## CROSS CONNECTION INFORMATION

A cross-connection is any temporary or permanent connection between a potable (drinking) water source and a non-potable source. Non-potable water or other sources can contaminate your drinking water if backflow occurs. Sources could include:

- Garden hoses
- Boilers
- Swimming pools
- Irrigation systems or wells
- Residential fire protection systems

Massachusetts DEP recommends the installation of backflow prevention devices for inside and outside hose connections to help protect the water in your home as well as the drinking water system in your town. For more information on cross connections, please call 617-242-5323 or visit [www.mwra.com](http://www.mwra.com).



## MWRA Wins the MassDEP Public Water Systems Award

The Department of Environmental Protection awarded a Public Water System Award to MWRA in 2020, recognizing MWRA's continued excellent level of performance and compliance with all drinking water standards.



## COMPLAINTS ARE ESSENTIAL TOO!

MWRA takes customer concerns seriously. Every call is investigated. Most complaints

are related to discolored water (usually related to local construction or hydrant use), or conditions in a building's plumbing. If you have any questions or concerns, contact your local water department, or call MWRA at (617) 242-5323.



# Town of Wakefield

## DEPARTMENT OF PUBLIC WORKS

Public Water Supply  
# 3305000

Wakefield uses an average of 1.95 million gallons of water per day. Most of the Town's water is supplied by the MWRA through three separate connections and meters. The Broadway Treatment Facility is used to supplement the MWRA supply in times of high demand, and can temporarily supply the entire Town (with water restrictions) in the event of an emergency interruption of the MWRA connections. The supply provided by the Broadway Facility is an indispensable part of our system.

### WATER DEPARTMENT STAFF AND OPERATIONS

The Wakefield Public Works Water Division maintains and operates the Broadway Treatment Facility, approximately 110 miles of water mains, 900 fire hydrants, the Linden Street water booster station, the Harts Hill standpipe, pressure reducing valves, blow-off valves, and multiple gate and service valves. We maintain our system by detecting leaks, repairing water main breaks, replacing old water mains, water meters, and hydrants, flushing water mains, and responding to the needs and concerns of our residents. Throughout the year, we conduct a thorough water sampling and testing program that complies with all State and Federal requirements. We also maintain an active Cross Connection Control Program, continuously inspecting facilities and testing devices to protect the water system from contamination.

### SOURCE WATER ASSESSMENT

MassDEP conducted a Source Water Assessment Program (SWAP) in 2004 to assess the susceptibility of the Crystal Lake supply to contamination. Based on their findings, DEP assigned a high susceptibility rank to Crystal Lake. However, the Town maintains treatment at Crystal Lake that meets or exceeds all drinking water standards and conducts extensive monitoring to mitigate risk of contamination. The complete SWAP report is available at the Department of Public Works or online at: [www.mass.gov/eea/docs/dep/water/drinking/swap/nero/3305000.pdf](http://www.mass.gov/eea/docs/dep/water/drinking/swap/nero/3305000.pdf).

### WATER ANALYSIS

The Town and the MWRA analyze water samples regularly to ensure compliance with drinking water standards. In 2020, we tested for more than 100 substances and only detected 10 regulated contaminants, all of which were below federal and state standards. Table 1 shows the detected amount of each contaminant. For those persons who are restricting their sodium intake, our testing indicates a sodium level of 82.2 ppm, equal to 20 milligrams per 8 ounce serving. A "low" sodium diet allows

consumption of water with 140 milligrams of sodium per 8 ounce serving. For additional information on sodium, please contact the Board of Health. The Town of Wakefield successfully maintains lead and copper levels well below the EPA requirements. If you have any questions about lead in your drinking water and would like to have it tested, please contact us.

### TOTAL COLIFORM RESULTS

Coliforms are bacteria that are naturally present in the environment and are used as an indicator that other, potentially harmful, waterborne pathogens may be present or that a potential pathway exists through which contamination may enter the drinking water distribution system. We found coliforms indicating the need to look for potential problems in water treatment or distribution. When this occurs, we are required to conduct assessments to identify any problems that were found during these assessments. In August and October 2020 coliforms were found in the water system in low concentrations. We were required to conduct one Level 1 assessment, a study of the water system to identify potential problems and determine why total coliform bacteria were found, and one Level 2 assessment, a very detailed study of the water system to identify potential problems and determine (if possible) why total coliform bacteria were found in our water system on multiple occasions. After deep cycling the standpipe tank and repairing two system supply valves, subsequent samples came back negative.

### UNREGULATED CONTAMINANTS MONITORING RULE (UCMR)

Under the UCMR, water systems are required by the EPA to test for Unregulated Contaminants for which the EPA has not established drinking water standards. This testing and reporting assists EPA in determining their occurrence in drinking water and whether future regulation is warranted. Of the 30 substances monitored, only 3 were detected.

Substance	Average Detected Level	Range of Detects	Highest Level Allowed
HAA6Br	6.3 ppb	0 – 18.3 ppb	Not regulated
HAA9	22.7 ppb	8.8 – 46.9 ppb	Not Regulated
Manganese	7.5 ppb	0.55 – 19.2 ppb	50 ppb (SMCL)

### Joseph Conway, Director of Public Works

For additional information please contact: Steven Fitzpatrick, Supervisor – Water/Sewer Divisions, Department of Public Works, Town Hall, 1 Lafayette Street. Tel. (781) 246-6318, [stevef@wakefield.ma.us](mailto:stevef@wakefield.ma.us)

**TABLE 1. REGULATED CONTAMINANTS**

Parameter	Units	MCL (Highest Level Allowed)	Highest Level Found	MCLG (Ideal Goals)	Violation	How it gets in the water
Turbidity <sup>1</sup>	NTU	TT = 5 NTU	0.77	n/a	NO	Soil runoff
		TT = % of samples < 1.0 NTU	100%			
Fluoride	ppm	4	0.78	4	NO	Water additive which promotes strong teeth
Chlorine	ppm	4	1.76 (0.07 – 2.7)	4	NO	Water disinfectant
Nitrate	ppm	10	0.07	10	NO	Runoff from fertilizer use; leaching from septic tanks; erosion of natural deposits
Total Trihalomethanes	ppb	80 <sup>2</sup>	26.6 <sup>2</sup>	0	NO	Byproducts of drinking water disinfection
		range of detection: 8.5 – 54.7 <sup>3</sup>				
Haloacetic Acids	ppb	60 <sup>2</sup>	20.15 <sup>2</sup>	0	NO	Byproducts of drinking water disinfection
		range of detection: 7.2 – 32.2 <sup>3</sup>				
Perchlorate	ppm	2	0.061	n/a	NO	Rocket propellants, fireworks, munitions, flares, blasting agents
Lead (2018)	ppb	AL = 15 <sup>4</sup>	6 <sup>4</sup>	0	NO	Corrosion in household plumbing systems
		range of detection: nd – 19		2 of 30 sites tested exceeded the AL		
Copper (2018)	ppb	AL = 1300 <sup>4</sup>	110 <sup>4</sup>	1300	NO	Corrosion in household plumbing systems
		range of detection: nd-120		No sites were above the AL		
Sodium	ppm	Not applicable (n/a)	82.2	n/a	NO	Water treatment, common mineral in nature

<sup>1</sup> TT = Treatment Technique: Turbidity is a measure of treatment performance and regulated as a treatment technique. Wakefield met the TT 100% of the time. <sup>2</sup> Highest level allowed (MCL) for this substance is based on the average of four quarterly samples at individual sample sites. <sup>3</sup> Highest value in range is based on individual samples, rather than averages. <sup>4</sup> For lead and copper, the Action Level (AL) and the highest level found are based on the 90th percentile of the samples. ND = not detected.