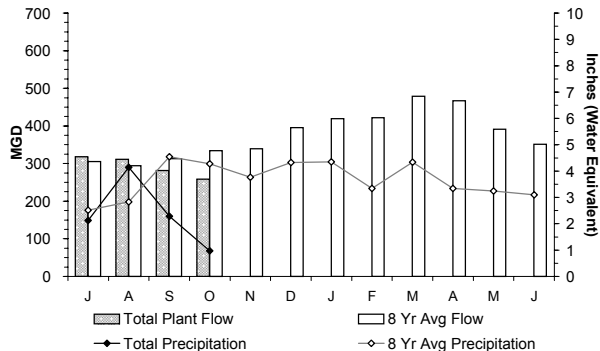


Deer Island Treatment Plant Performance

October 2001

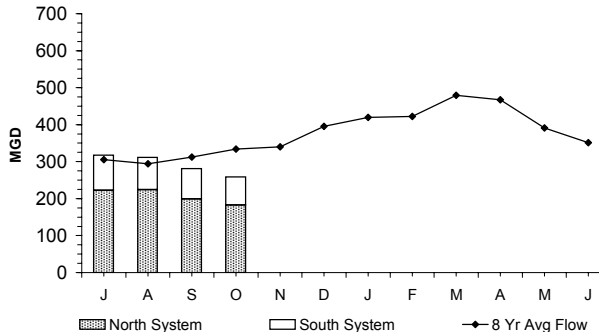
Wastewater effluent quality is monitored by MWRA to assess compliance with water quality standards and the pollutant limits set forth in the NPDES permit issued by EPA and DEP to MWRA. The graphs below display the levels of pollutants measured compared with the NPDES permit limits.

Plant Flow & Rainfall



Total Plant flows, for the month of October, were 23% lower than the 8-Yr Avg Flow due to low rainfall over the last two months.

Plant Flow by Service Area

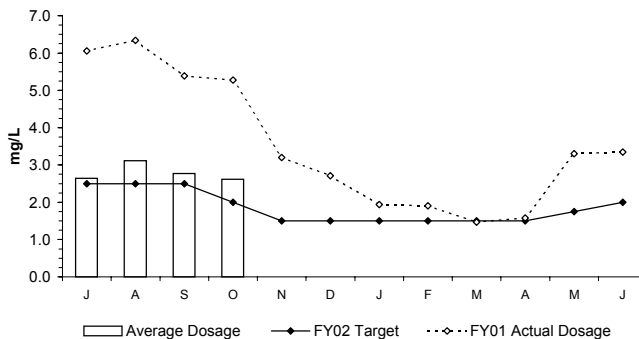


The 8-year average represents data from FY93 - FY00. Prior to FY98 the North and South System flows were treated at separate treatment plants.

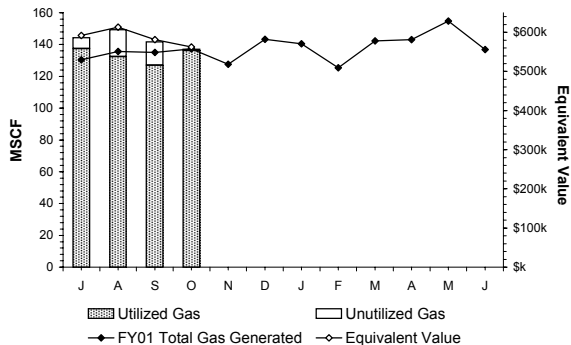
Disinfection dosage rates were 31% higher than the FY02 target in October due to higher than anticipated chlorine demands. Target effluent total chlorine residual (TCR) levels were on target. Staff continue to monitor the relationship between chlorine dose and chlorine residual at the new lower dosage rates.

The overall disinfection dosing rate (target and actual) is dependent on plant flow, target effluent total chlorine residual levels, effluent quality and NPDES permit levels for fecal coliform.

Deer Island Sodium Hypochlorite Use Disinfection Dosage



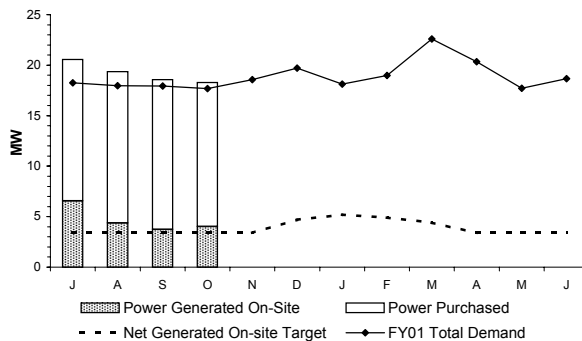
Digester Gas Generation/Utilization



>99% of the digester gas generated on island was utilized in the month of October. See MWRA Energy Page for relative contribution of gas to total demand.

"Equivalent value" is the approximate cost of oil-equivalent having the same heat value. It does not necessarily reflect the amount of oil that would have been used if DiGas were not available.

Power Demand (Generated On-Site & Purchased)



Overall Power Demand (Purchase Power and Power Generated On-Site) operated as predicted in the month of October.