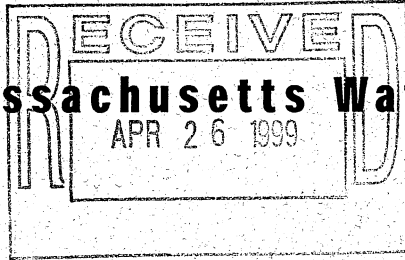




Massachusetts Water Resources Authority



APRIL 20 1999

WATER QUALITY UPDATE

An Analysis of March, 1999 Sampling Data.

In this Issue . . .

March, 1999 Sampling Data pp. A-6
Special Supplement: Community Average Total Chlorine Residuals, TTHM Levels & MWRA Monthly Mineral Analysis

This is a periodic report containing important information about the quality of water supplied by MWRA. We hope this report is useful to you as a local water supplier, public health official, water consumer or observer of MWRA's system performance.

MWRA provides about 250 million gallons of water each day to 46 cities and towns in eastern and central Massachusetts. Each municipality is responsible for distributing the water in its own community. Twenty-five of the customer communities are fully supplied by MWRA. The other communities use MWRA water to augment their own supplies, either on a regular basis or in times of water shortage. More than two million people are served by the MWRA water supply system.

THE WATER SYSTEM

Quabbin Reservoir is the primary source of water for our system and one of the country's largest water supply impoundments with a capacity of 412 billion gallons. Water is transferred from the Quabbin Reservoir to the 65 billion gallon Wachusett Reservoir in Clinton via the Quabbin Aqueduct. The watersheds serving the Quabbin and Wachusett Reservoirs total 294 square miles. MWRA and the Metropolitan District Commission (MDC) are committed to protection of the water supply through aggressive watershed management as the first line of defense against water contamination.

Water is next piped from the Wachusett Reservoir to Norumbega and Weston Reservoirs in Weston via the Hultman and Weston Aqueducts respectively.

Municipalities in the MWRA service area receive drinking water distributed directly from the Hultman Aqueduct, the Norumbega Reservoir and the Weston Reservoir.

INDICATORS OF WATER QUALITY

MWRA routinely uses six general indicators of water quality:

- Microbial (bacteria and algae)
- Turbidity
- Corrosiveness (pH and alkalinity)
- Disinfectant
- Chemical (inorganic and organic)
- Radionuclides

Tests are conducted on water sampled at the source reservoirs (source water) and also on water after treatment sampled from MWRA or community lines (treated water). Testing frequencies vary by parameter.

Microbial: Algal levels in reservoirs are monitored by MDC and MWRA. These results, along with taste and odor complaints, are used to make decisions on source water treatment for algae control.

Total coliform bacteria are monitored in both source and treated water to provide an indication of overall bacteriological activity. Since many members of the coliform bacteria group originate from the non-intestinal environment, such as soil, many coliform are harmless. A subclass of the coliform group which are identified by their growth at temperatures consistent with intestinal environments, the "fecal coliform bacteria," are indicators of possible intestinal contamination. *Escherichia coli* (*E. coli*) is a specific coliform species that is almost always present in fecal material and whose presence indicates likely bacterial contamination of intestinal origin.

For more information, please contact MWRA Public Affairs at (617) 788-1170.
100 First Avenue, Charlestown Navy Yard, Boston, MA 02129.

For further information regarding health concerns, please contact the Department of Public Health/Division of Epidemiology at (617) 983-6800 or Boston Public Health Commission at (617) 534-5611.

Turbidity: Turbidity is a measure of suspended and colloidal particles including clay, silt, organic and inorganic matter, algae and microorganisms. The effects of turbidity depend on the nature of the matter which causes the turbidity. Particulate matter may have a chlorine demand or may protect bacteria from the disinfectant effects of chlorine, thereby interfering with the maintenance of a disinfectant residual throughout the distribution system.

Corrosiveness: In order to minimize the leaching of lead and copper in plumbing systems, the pH, or corrosivity, is monitored and adjusted. Water provided by MWRA is basically lead free when it leaves the reservoirs but individual building service lines that carry water from street mains, as well as household plumbing fixtures, can contain lead that is susceptible to corrosion and leaching into tap water. In June 1996, MWRA's Interim Corrosion Control (ICC) facility in Marlborough went on-line. MWRA believes the ICC provides the optimal corrosion control treatment now achievable for all MWRA customer communities east of and including Marlborough. The chemicals sodium carbonate (soda ash) and CO₂ (carbon dioxide) are added to increase the pH and buffering capacity of the water which should considerably reduce the lead levels found when you first use your tap.

Disinfectant: MWRA treats the water supplied using disinfection facilities at Quabbin, Wachusett, Norumbega and Weston Reservoirs. At Wachusett Reservoir, chlorine is added to provide primary disinfection necessary to inactivate pathogens that may be present in the source water. At Norumbega and Weston Reservoirs, chlorine also provides some additional primary disinfection. With the further addition of ammonia, chloramines are formed to establish a sufficient level of residual disinfectant to protect against any new contaminants that may enter the distribution system.

Chemical: Inorganics are measured at Quabbin and Wachusett Reservoirs. Analyses of disinfection byproducts such as trihalomethanes are performed at various locations throughout the distribution system. Volatile organic compounds are measured at the distribution reservoirs: Norumbega and Weston. Synthetic organic compounds are measured at Wachusett Reservoir. MWRA generally meets applicable standards.

Radionuclides: Radionuclides are measured at three distribution locations. MWRA generally meets applicable standards.

SAMPLING AND ANALYSIS

MWRA conducts all water sampling and testing required by federal and state law. We also conduct baseline and periodic research to help us improve water quality. Results of testing are compared to standards and guidelines prepared by DEP and recommendations for further action are made if reported levels are above the standards.

Source water: MWRA collects samples from the source water supply and reservoirs which are tested for coliform bacteria, turbidity, pH, chemical constituents and radionuclides.

Treated water: MWRA collects treated water samples throughout the system and conducts tests for pH, temperature, disinfectant residual and coliform bacteria. In addition, customer communities routinely collect treated water samples in compliance with federal Safe Drinking Water Act (SDWA) testing requirements including the Total Coliform Rule. These samples are analyzed for disinfectant residual and coliform bacteria.

Communities may bring their samples to the MWRA Water Quality Laboratory for analysis, or they may have samples analyzed elsewhere. MWRA Laboratories test samples for all customer communities except Bedford, Cambridge, Canton, Chicopee, Clinton, Leominster, Lynn, Marlborough, Northborough, Peabody, South Hadley, Wilbraham, Woburn and Worcester. Community data for these communities are not presented in this report.

FEDERAL SAFE DRINKING WATER ACT (SDWA)

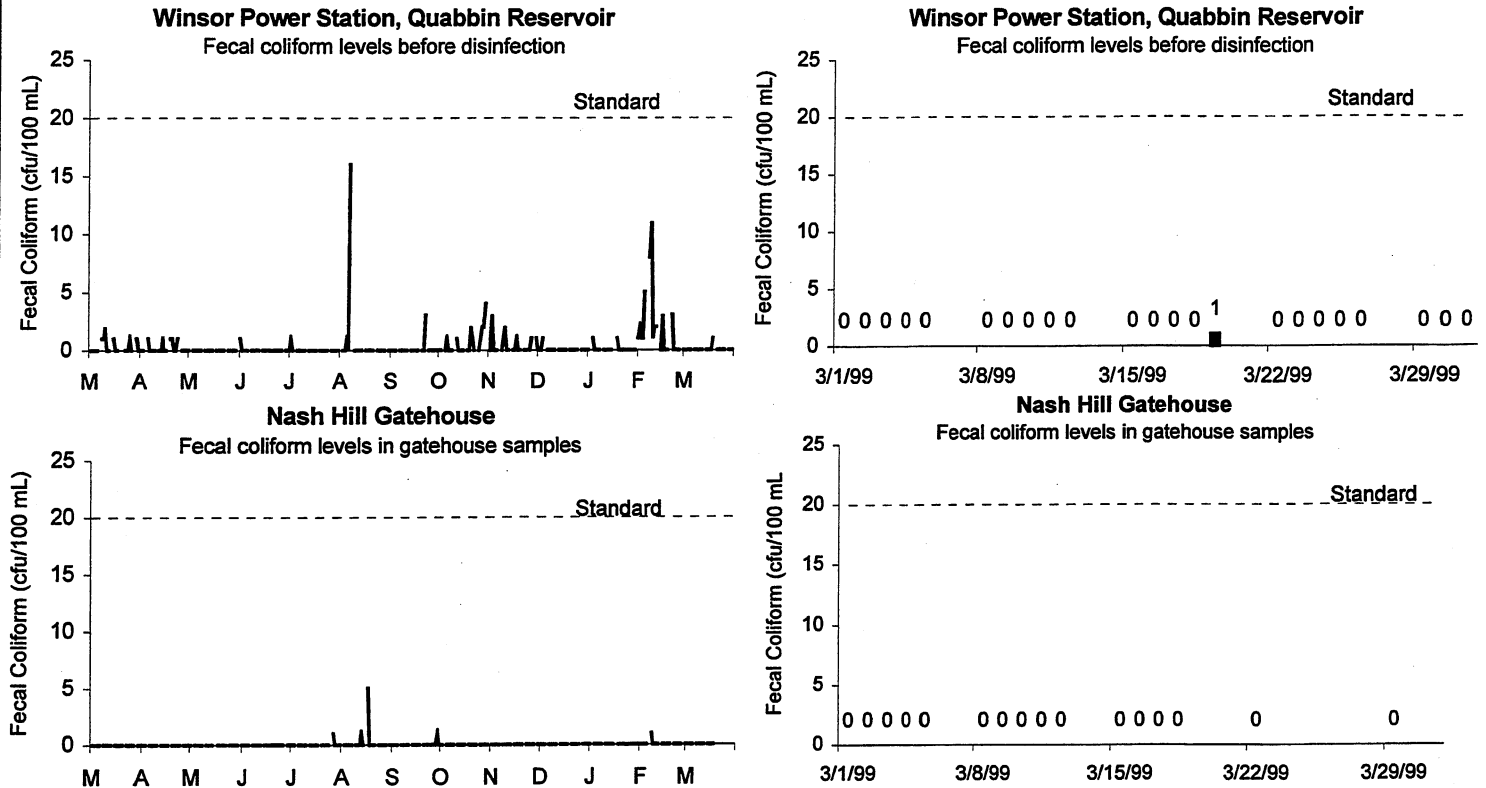
The Surface Water Treatment Rule (SWTR) of the SDWA sets standards for unfiltered use of MWRA's source waters from the Quabbin and Wachusett Reservoirs. If such standards are not met, filtration could be required. The standards relate to coliform, turbidity, watershed protection, disinfection byproducts and the absence of waterborne disease outbreaks. Quabbin Reservoir has demonstrated compliance with the standards and has therefore been found to be exempt from the filtration requirement. On October 21, 1998, MWRA's Board of Directors voted to build an ozonation facility at the new MWRA water treatment plant to be constructed at Walnut Hill. This decision enables MWRA to add filtration technology at a later date, if the need arises, and to begin upgrading and replacing local pipes in MWRA and community distribution systems. The Board decision was approved by the Massachusetts Department of Environmental Protection but challenged by the U.S. Environmental Protection Agency, and is currently before the federal district court for decision.

MWRA
Source Water – Chicopee Valley Aqueduct
Fecal Coliform Levels At Quabbin Reservoir (Winsor Power Station) And Nash Hill Reservoir
March 1999

Quabbin Reservoir water sampled at Winsor Power Station before chlorination represents reservoir water entering the Chicopee Valley Aqueduct (CVA). The Surface Water Treatment Rule (SWTR) for unfiltered supplies requires that no more than 10% of samples over any six-month period have over 20 fecal coliforms per 100 ml. Fecal coliform levels tend to be low at the Winsor location. MWRA met the six-month running average standard for fecal coliform continuously here over the last year. This month, levels remain below standards.

Covered water storage at Nash Hill went on-line on March 12 and the Nash Hill Reservoir went off-line on March 17. Since this is no longer an open water supply, MWRA is no longer required to collect samples daily. Formerly, samples from Nash Hill were collected five days a week at a point where samples may have contained a mix of aqueduct water with reservoir water, depending on whether the reservoir was filling or discharging. MWRA now collects samples weekly and analyzes them for fecal coliform, total coliform, and total chlorine.

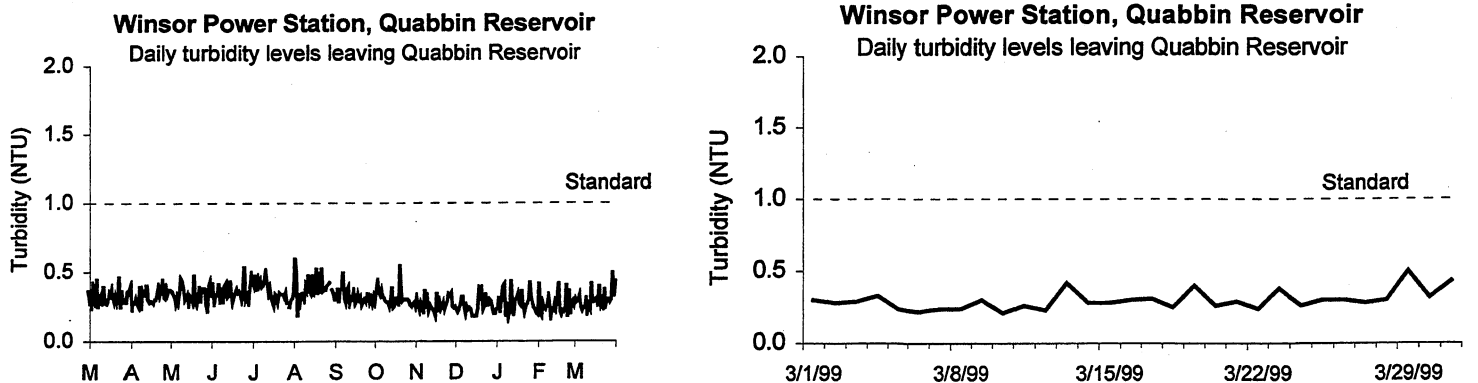
Results presented here cover the last thirteen months and the most recent month.



Source Water – Chicopee Valley Aqueduct
Turbidity Levels at Quabbin Reservoir (Winsor Power Station)

Samples for turbidity are collected at Winsor Power Station before chlorination and represent reservoir water entering the CVA. The Massachusetts Department of Environmental Protection standard for source water turbidity is 1.0 NTU.

Turbidity levels are well below DEP standards. Occasional spikes in turbidity do occur through the year, often related to rainfall or icing over of the reservoir.



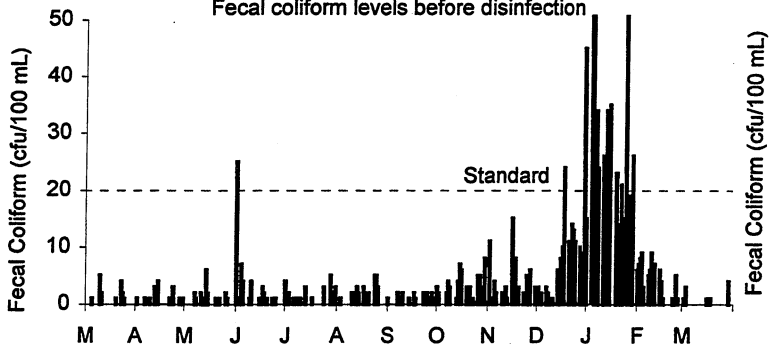
**MWRA
Source Water
Fecal Coliform Levels and Primary Disinfection at Wachusett Reservoir
March 1999**

Samples from Wachusett Reservoir are collected at a location inside the Cosgrove Intake facility and represent water entering the Cosgrove Aqueduct. The Surface Water Treatment Rule (SWTR) for unfiltered supplies requires that no more than 10% of samples over any six-month period have more than 20 fecal coliforms per 100 ml. The six-month running average results represent the percent of samples exceeding 20 cfu/100 ml during the previous 6-months. Samples for turbidity are collected at Shaft 4 in Southboro, after primary disinfection and corrosion control treatments. The DEP standard for source water turbidity is 1.0 NTU.

Fecal coliform counts for the month were all below the 20 cfu/100 ml standard. The six-month running average is 11%, above the 10% standard, because of 14 samples that exceeded 20 cfu/100 ml during December and January. Each year, seasonal variations in fecal coliform levels occur, usually related to icing over of nearby water bodies and birds visiting Wachusett, which tends to freeze later in the year.

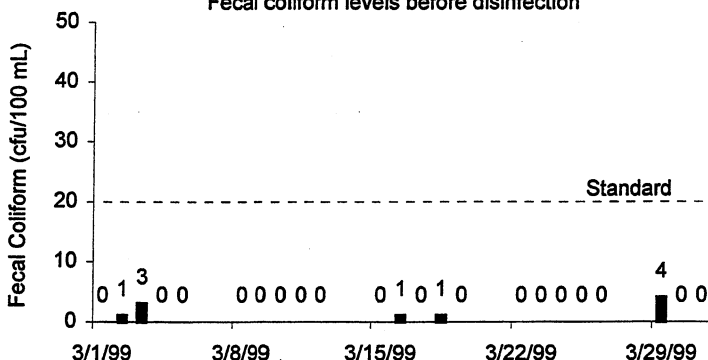
Cosgrove Intake, Wachusett Reservoir

Fecal coliform levels before disinfection



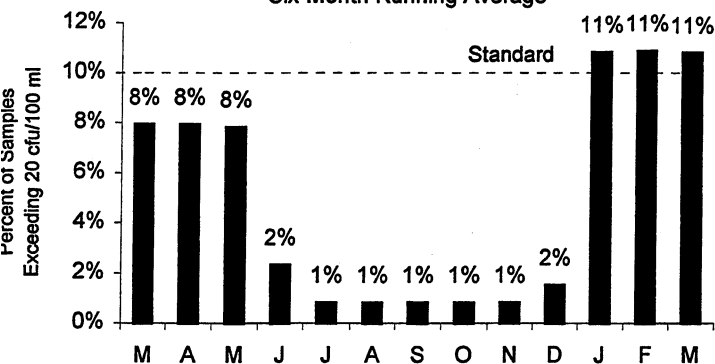
Cosgrove Intake, Wachusett Reservoir

Fecal coliform levels before disinfection



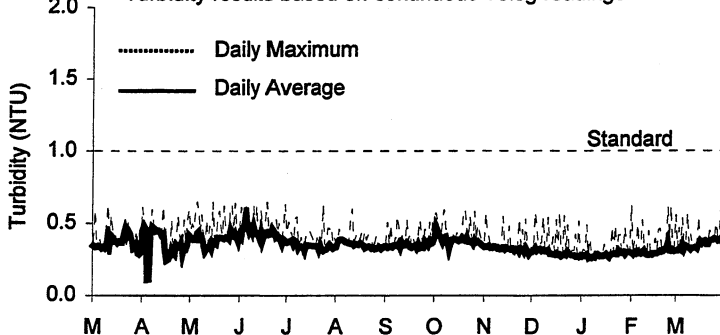
Cosgrove Intake, Wachusett Reservoir

Six Month Running Average



Shaft 4, Wachusett Reservoir

Turbidity results based on continuous Telog readings

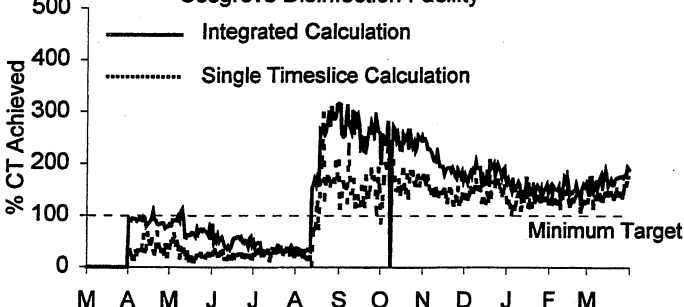


**Primary Disinfection
Cosgrove Disinfection Facility**

For March, MWRA provided disinfection adequate to achieve EPA's requirement of 99.9% inactivation of giardia cysts and 99.99% inactivation of viruses in drinking water. Since September 1997, MWRA has added sodium hypochlorite to source water at Cosgrove Intake to achieve primary disinfection. The concentration (C) of the disinfectant in the water over time (T) yields a measure of the effectiveness of disinfection, CT. The required CT varies with water temperature, pH, and other factors. MWRA calculates daily CT inactivation rates at maximum flow, as specified by EPA regulations. CT based on a single measurement, or 'timeslice', gives a lower disinfection credit than CT based on an integrated calculation, a more precise measurement. The integrated calculation method would permit a lower chlorine dose, which minimizes disinfection by-products in treated water. MWRA and DEP are together discussing the possibility of using this method of calculation to determine regulatory compliance in the future.

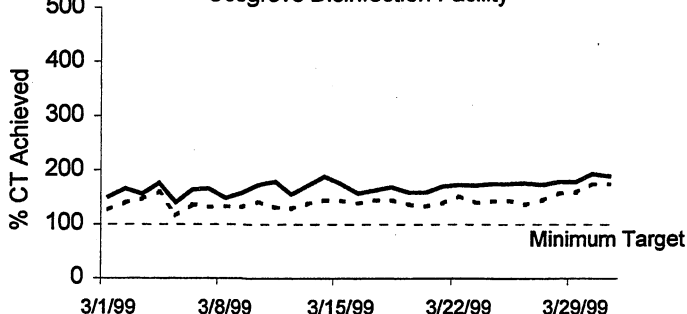
Giardia CT Percent Achievement

Cosgrove Disinfection Facility



Giardia CT Percent Achievement

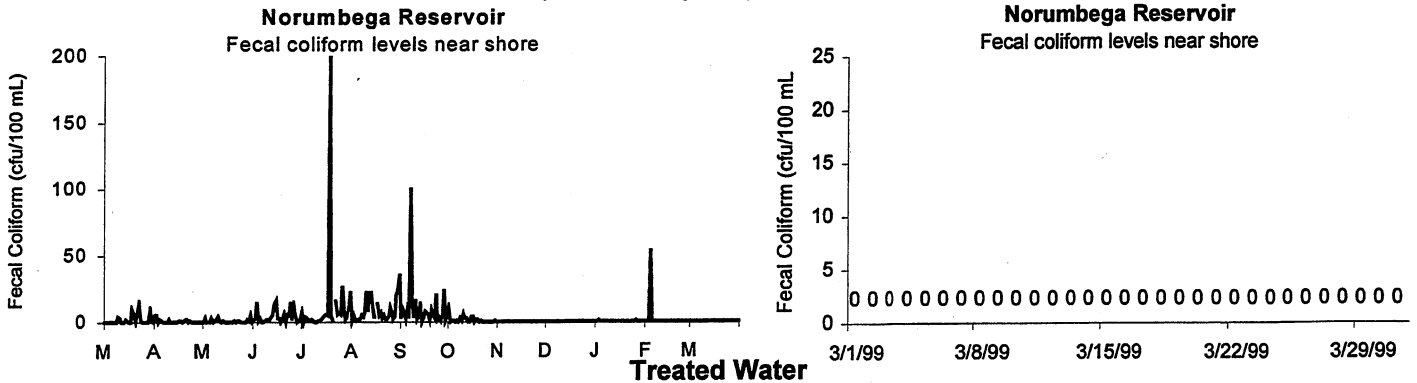
Cosgrove Disinfection Facility



**MWRA
Distribution Water
Fecal Coliform Levels in Norumbega Reservoir
March 1999**

Fecal coliform samples from Norumbega Reservoir are collected from the shore near the gatehouse. Flow from Norumbega Reservoir supplements flows from Wachusett Reservoir daily to meet peak demand.

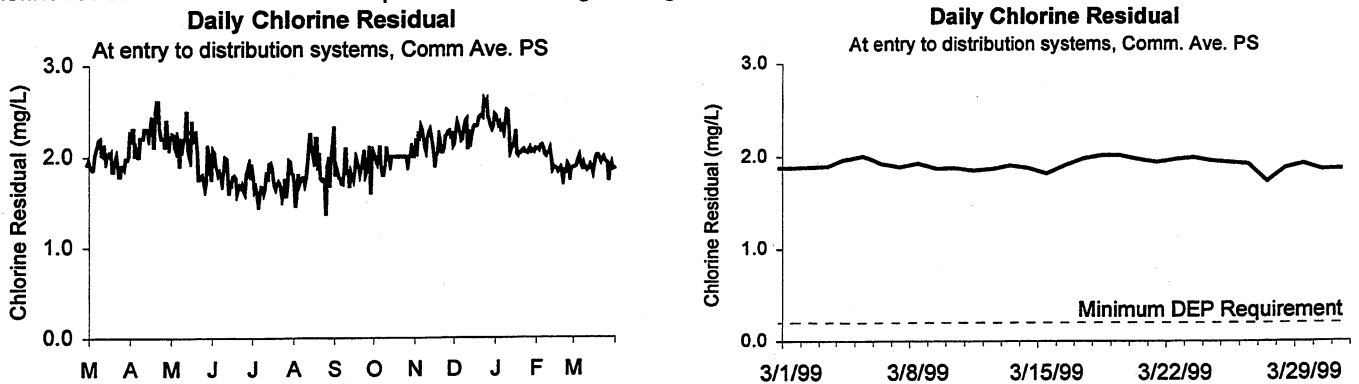
Fecal coliform levels are elevated periodically, partly because samples collected from the shore of this small reservoir are more susceptible to local disturbances. Bird harassment and watershed protection programs were stepped up in September 1998 to minimize contamination. No fecal coliform were present in any samples collected at Norumbega.



**Disinfectant Levels in Hultman Aqueduct at Norumbega Disinfection Facility and
Commonwealth Avenue Pump Station (Entry Point to Customer Distribution Systems)**

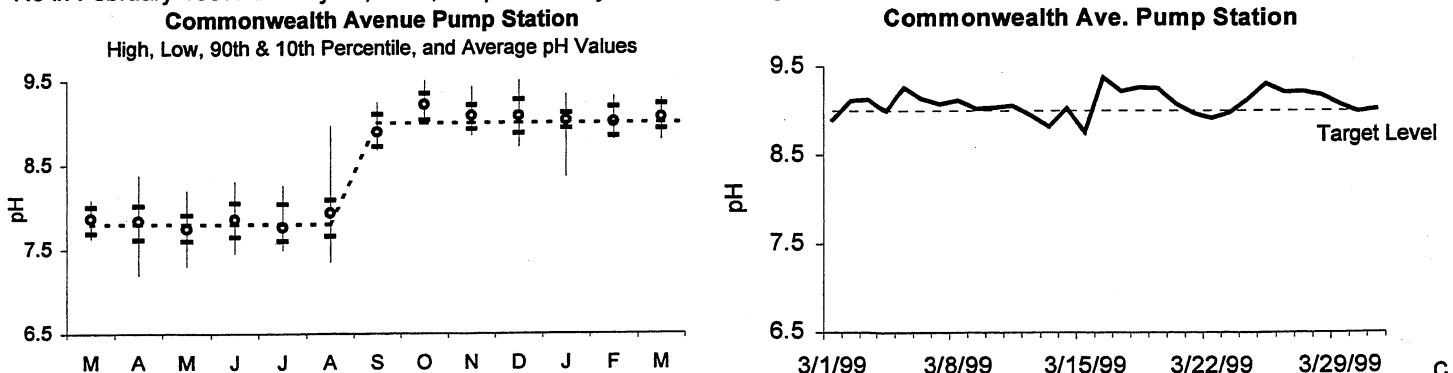
Chloramination at Norumbega Disinfection Facility provides 3-8 minutes of contact time with free chlorine before ammonia addition. Chloramination provides residual disinfection to minimize bacterial regrowth in the distribution system (primary disinfection is provided at Wachusett Reservoir/Cosgrove Intake).

The target for total chlorine residual at Commonwealth Avenue Pump Station is adjusted periodically in an effort to optimize disinfection while minimizing concerns with nitrification, taste and odor, and disinfection by-product (DBP) formation. Seasonally, chlorine residuals fluctuate due to temperature and dosage changes. Total chlorine residuals averaged 1.9 mg/l for the month.



pH Levels at Entrance to Distribution System

MWRA adjusts the alkalinity and pH of Wachusett water to reduce its corrosivity in order to minimize the leaching of lead and copper from service lines and home plumbing systems into the water. In June 1996, the Interim Corrosion Control (ICC) facility went on-line and is providing corrosion control to communities east of and including Marlborough. Initial pH targets were 7.5 in June 1996, then 7.8 in February 1997. On July 27, 1998, the pH was adjusted from a target of 7.8 to 9.0 to further minimize leaching of lead.



MWRA
Total Coliform Rule Results for Communities Participating in
MWRA Testing Program
March 1999

Background

Thirty-three cities and towns use the MWRA Laboratory for Total Coliform Rule compliance testing. These communities collect samples for bacteriological analysis and measure chlorine residual at the time of collection. Cambridge conducts their own monitoring and provides their data to MWRA. The other 12 MWRA customer communities have their samples tested elsewhere and these towns should be contacted directly for their results.

The SDWA requires that no more than 5% of all samples may be total coliform positive in a month (or that no more than 1 sample be positive when less than 40 samples are collected each month). Public notification is required if this standard is exceeded.

If *E. coli* are detected in a drinking water sample, this is considered evidence of a critical public health concern. Additional testing is conducted immediately and joint corrective action by DEP, MWRA, and the community is undertaken. Public notification is required if follow-up tests confirm the presence of *E. coli* or total coliform.

MWRA considers a disinfectant residual of 0.2 mg/L a minimum target level at all points in the distribution system.

Highlights

None of the 1,908 samples tested was positive for coliform during the month of March.

All thirty-four communities that submitted chlorine residual data maintained an average disinfectant residual of at least 0.2 mg/L. Fourteen communities had one or more samples with a disinfectant residual lower than 0.2 mg/L. Average chlorine residuals in all communities remained near or above last year's levels, which were themselves significantly above chlorine residual levels for the preceding year.

Town	Samples Tested for Coliform (a)	Total Coliform % Positive	<i>E. coli</i> % Positive	Public Notification Required?	Mar. 1999 Minimum Chlorine Residual (mg/L)	Mar. 1999 Average Chlorine Residual (mg/L)	Mar. 1998 Average Chlorine Residual (mg/L)
ARLINGTON	56				0.09	1.08	0.79
BELMONT	40				0.10	0.67	0.60
BOSTON	266				0.52	1.64	1.59
BROOKLINE	85				1.20	1.73	1.67
CAMBRIDGE	83				0.11	1.53	
CHELSEA	40				0.23	1.48	0.53
EVERETT	50				0.60	1.62	1.22
FRAMINGHAM (c)	72				0.11	1.37	
LEXINGTON	45				1.70	1.80	1.51
LYNNFIELD	14				0.40	1.01	0.94
MALDEN	75				0.00	0.86	0.96
MARBLEHEAD	24				0.20	1.37	1.50
MARLBOROUGH (b) (c)	46				0.25	0.77	
MEDFORD	85				0.10	0.89	0.43
MELROSE	45				0.10	1.20	0.80
MILTON	40				0.30	0.47	0.37
NAHANT	10				0.30	0.96	0.38
NEEDHAM (b)	51				0.02	0.46	0.22
NEWTON	88				0.71	1.44	1.19
NORWOOD	50				0.00	0.88	0.67
QUINCY	115				0.10	1.14	0.75
REVERE	65				0.40	1.27	0.71
SAUGUS	40				0.10	0.53	0.33
SOMERVILLE	100				0.30	1.26	1.19
SOUTHBORO (c)	9				0.30	0.88	
STONEHAM	28				1.20	1.52	1.47
SWAMPSCOTT	18				0.02	1.57	1.53
WAKEFIELD (b)	44				0.74	1.59	0.96
WALTHAM	84				1.00	1.45	1.36
WATERTOWN	40				0.20	1.04	0.19
WELLESLEY (b)	36				0.20	0.67	0.38
WESTON (c)	15				0.92	1.21	0.59
WINCHESTER (b)	25				0.12	0.60	0.35
WINTHROP	24				0.10	1.18	0.78
Total:	1908						

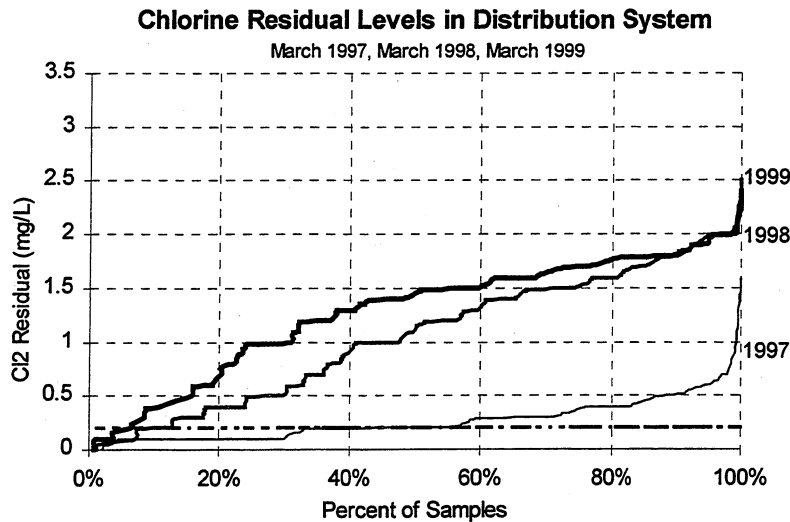
- (a) The number of samples collected depends on the population served and the number of repeat samples required.
 (b) These communities are partially supplied, and may mix their chlorinated supply with MWRA chloraminated supply.
 (c) These communities re-chlorinate (since July/August 1998).

MWRA
Treated Water
Chlorine Residual Levels in Communities
 March 1999

The following chart compares Metropolitan Boston total chlorine residuals for community systems in March of 1997, 1998, and 1999. Each line on the chart describes the cumulative percentage of samples (on the x-axis) at various levels of total chlorine residual (on the y-axis) for a given year. MWRA has established a target for chlorine residuals throughout community distribution systems of 0.2 mg/L to control pipeline biofilm and bacterial regrowth in the distribution system. The graph shows how MWRA has progressed toward meeting this target.

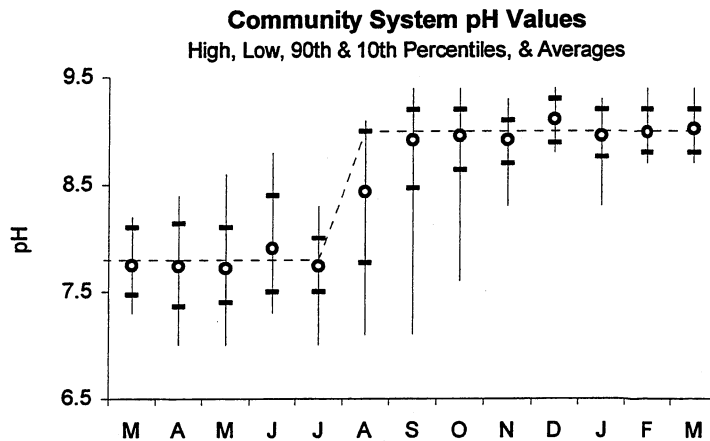
Results vary by month due to changes in chlorine dose, chlorine decay, and temperature. The trend over the years shows a significant increase in total chlorine residuals. These improvements are related to disinfection changes: chlorine ramp-up during summer 1997; ammonia separation in August 1997; and chlorine:ammonia ratio optimization begun in August 1997. In March 1997, about 66% of the samples met the chlorine residual target of 0.2 mg/L; by March 1999, 96% of all samples met this target, up from 93% in March 1998.

MWRA must meet regulations that require either that chlorine residuals in at least 95% of samples be detectable or that HPCs (Heterotrophic Plate Counts) be lower than 500 cfu/ml. In March, sample results from all communities participating in the MWRA program satisfied requirements for both chlorine residuals and HPCs.



Treated Water
pH Levels in Communities

MWRA adjusts the alkalinity and pH of Wachusett water to reduce its corrosivity in order to minimize the leaching of lead and copper from service lines and home plumbing systems into the water. In June 1996, the Interim Corrosion Control (ICC) facility went on-line and is providing corrosion control to communities east of and including Marlborough. Initial pH targets were 7.5 in June 1996, then 7.8 in February 1997. On July 27, 1998, the pH was adjusted from a target of 7.8 to 9.0 to further minimize leaching of lead. MWRA staff collect and analyze pH samples from 26 community locations on a biweekly schedule. The results appear below.



**MWRA
Treated Water
TTHM Levels in Communities
March 1999**

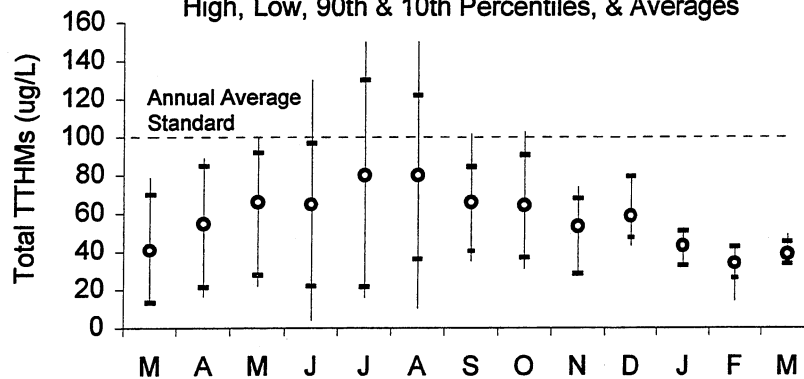
Total Trihalomethanes (TTHMs) are by-products of water treatment with chlorine. Chlorination levels, the presence of organic precursors, pH levels, the contact time of water with chemicals used for disinfection, and temperature all affect TTHM levels. TTHMs are of concern due to their potential adverse health effects at high levels. The TTHM standard currently is an annual running average of 100 ug/L for all sample locations combined. EPA issued new rules which will be effective in November 2001 that will reduce the TTHM standard to 80 ug/L. DEP requires samples to be collected quarterly; MWRA samples weekly at some locations, quarterly at others. These graphs report results both on a monthly and quarterly basis. The graph of quarterly averages illustrates DEP's compliance standard.

TTHM levels increased as the chlorine dose at the Cosgrove Disinfection Facility was increased to a level sufficient to meet CT requirements. Warmer water temperatures also contributed to slightly increased TTHM levels. The annual running averages for both MetroWest and Metropolitan Boston regions meet both the current and the newly issued standards that take effect in 2001.

MetroWest Locations

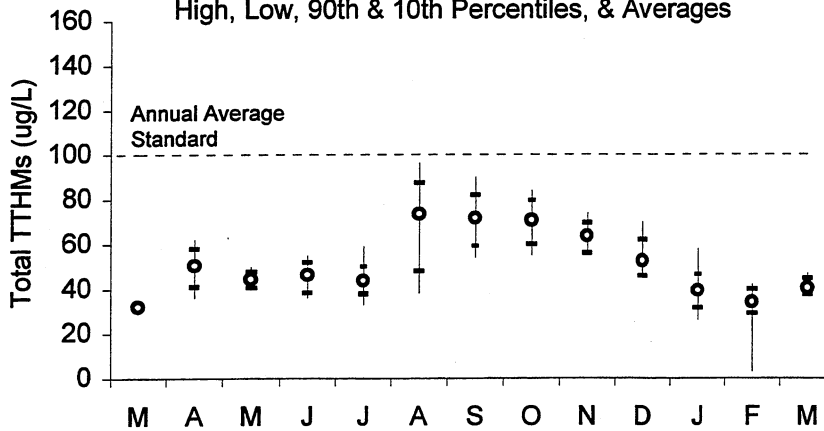
Marlboro, Southboro, Framingham, & Weston

High, Low, 90th & 10th Percentiles, & Averages



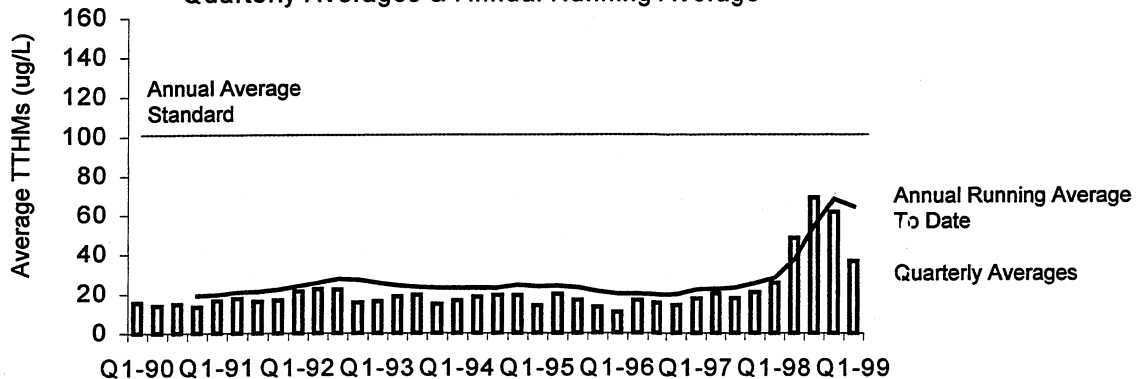
Metropolitan Boston Locations

High, Low, 90th & 10th Percentiles, & Averages



Metropolitan Boston Locations

Quarterly Averages & Annual Running Average



MWRA Monthly Mineral Analysis

March 1999

This monthly mineral analysis provides information on water quality at four locations in the MWRA transmission system.

Component	Cosgrove Intake at Wachusett Reservoir	ICC, Marlboro	Comm Ave., Newton	Shaft 9A, Malden	MCL Standard	Units	Exceedance
Alkalinity	4.96	34.0	43.2	36.0		MG/L	
Aluminum	16.6	16.8	18.9	17.7	50-200 (a)	UG/L	NO
Ammonia	0.062	0.019	0.418	0.403		MG/L	
Antimony	< 2	< 2	< 2	< 2		UG/L	
Arsenic	< 0.8	< 0.8	< 0.8	< 0.8	50 (b)	UG/L	NO
Barium	7.48	8.56	7.65	7.54	2000 (b)	UG/L	NO
Beryllium	< 0.1	< 0.1	< 0.1	< 0.1	4 (b)	UG/L	NO
Cadmium	< 0.1	< 0.1	< 0.1	< 0.1	5 (b)	UG/L	NO
Calcium	3.76	4.2	3.84	3.85		MG/L	
Chloride	13.1	15.3	15.1	15.4	250 (a)	MG/L	NO
Chlorine, Free	-	0.18	0.09	0.08		MG/L	
Chlorine, Total	-	0.88	1.87	1.97		MG/L	
Chromium	< 0.6	< 0.6	1.02	< 0.6	100 (b)	UG/L	NO
Coliform, Total, MF Method	0	0	0	0	0 (d)	CFU/100 mL	NO
Color	11	7	8	8	15 (a)	C.U.	NO
Copper	3.03	4.70	3.92	3.38	1300 (b)	UG/L	NO
Cyanide	< 0.01	< 0.01	< 0.01	< 0.01		MG/L	
Fluoride	0.136	0.935	0.954	0.839	4 (b)	MG/L	NO
Hardness	12.5	13.8	12.8	12.7		MG/L	
Iron	19.1	22.0	23.2	20.0	300 (a)	UG/L	NO
Lead	< 2.4	< 2.4	< 2.4	< 2.4	15 (b)	UG/L	NO
Magnesium	750	793	770	760		UG/L	
Manganese	7.69	6.67	7.82	7.01	50 (a)	UG/L	NO
Mercury	< 0.01	0.0119	< 0.01	< 0.01	2 (b)	UG/L	NO
Nickel	< 1	< 1	1.03	< 1		UG/L	
Nitrate-N	0.0848	0.0881	0.0939	0.0942	10 (b)	MG/L	NO
Orthophosphate	0.005	0.008	0.008	0.009		MG/L	
Potassium	798	817	822	830		UG/L	
Selenium	< 0.9	< 0.9	< 0.9	< 0.9	50 (b)	UG/L	NO
Silica (SiO ₂)	2.36	2.91	2.82	2.88		MG/L	
Silver	< 0.4	< 0.4	< 0.4	< 0.4	100 (a)	UG/L	NO
Sodium	8.63	16.8	21.4	21.4		MG/L	
Specific Conductance	80	113	132	129		UMHOS	
Standard Plate Count, HPC (48 Hrs @ 35C)	41	15	4	2	500 (b)	CFU/mL	NO
Sulfate (SO ₄)	6.84	6.97	6.88	7.11	250 (a)	MG/L	NO
Thallium	< 1	< 1	< 1	< 1	2 (b)	UG/L	NO
Total Dissolved Solids	49	83	80	80	500 (a)	MG/L	NO
Trihalomethanes, Total (TTHMS) (f)	-	13	37	34	100 (b) (e)	UG/L	NO
Turbidity	0.22	0.24	0.32	0.21	1 (c)	NTU	NO
Zinc	1.05	1.84	1.92	1.11	5000 (a)	UG/L	NO

- (a) = Secondary MCL standard (aesthetic related). DEP "Drinking Water Regulations", 310CMR 22.00.
 (b) = Primary MCL standard (health related). DEP "Drinking Water Regulations", 310CMR 22.00.
 (c) = Primary MCL standard (health related), applies to Wachusett Reservoir only (source water). DEP "Drinking Water Regulations", 310CMR 22.00.
 (d) = Primary MCL standard (health related). DEP "Drinking Water Regulations", 310CMR 22.00. Applies to samples downstream of Wachusett Reservoir.
 (e) = THM compliance is based on a running annual average of samples collected at DEP approved locations.
 (f) = Average TTHM result for weekly samples collected in the month of March 1999.

MCL = Maximum Contaminant Level	C.U. = Color Unit
CFU = Colony Forming Unit	NTU = Nephelometric Turbidity Unit
S.U. = Standard Units	Mg/L = milligrams per liter = parts per million
ug/L = micrograms per liter = parts per billion	< = less than method detection limit

These results are based on single grab samples collected March 2, 1999 and analyzed by MWRA and contract laboratories.

FREQUENCY OF SOURCE WATER QUALITY SAMPLING PROGRAM

PARAMETER	MWRA SAMPLES
Total and Fecal coliform	daily at source reservoirs, weekly in distribution reservoirs
Turbidity	daily at source and distribution reservoirs
pH	daily at distribution reservoirs
Chemical analyses	periodically as required under SDWA
Radionuclides	as required, currently every five years

FREQUENCY OF TREATED WATER QUALITY SAMPLING PROGRAM

PARAMETER	MWRA SAMPLES	COMMUNITY SAMPLES
Total coliform	weekly at select locations	frequency and number depends on population served
Disinfectant Residual	weekly at select locations	collected with total coliform samples
pH	weekly at select locations	

Customer communities must also meet certain standards under the SDWA concerning distribution of treated drinking water. The Total Coliform Rule (TCR) helps to alert the local water suppliers to possible local distribution system issues as well as the adequacy of residual disinfection. MWRA provides testing services for many of the communities, and tests over 1500 samples per month. Under the SDWA, a violation of the TCR occurs when greater than 5% of the samples are positive for total coliform.

DISINFECTANT RESIDUAL

The effectiveness of disinfection is calculated by determining the length of time water is in contact with a specific dosage of disinfectant. This calculated value is commonly called CT (Concentration multiplied by Time) and is derived mathematically from assumptions about the residual disinfectant dosage in the water as it reaches the user multiplied by the travel time from the point of application of the disinfectant.

The required CT to provide target inactivation varies somewhat due to ambient pH or temperature conditions, as well as the strength of the disinfectant, *e.g.* free chlorine has greater pathogen inactivation properties than chloramines in the same concentration. The calculated CT of the disinfection system is then compared to the required values necessary to achieve the desired level of inactivation of key pathogens such as bacteria, viruses, and protozoa. In this classification of pathogens, bacteria are the most prevalent and are the first focus of disinfection. Fortunately, harmful bacteria are relatively easily inactivated by chlorination. Viruses are more resistant to chlorination. *Giardia* and *cryptosporidium* are examples of pathogenic protozoa that are particularly difficult to inactivate using normal dosages of chlorine but are less commonly found in source waters.

The reduction of residual disinfectant levels within a pipeline system is affected by a variety of factors including temperature, presence of organic matter in the water or on the pipe surface and corrosion of the pipe surface. For residual disinfection, MWRA uses a chlorine-ammonia combination to form chloramines, a longer-lasting residual disinfectant than free chlorine alone. The level of the residual disinfectant is measured throughout the distribution system using a colorimetric test by which a color change in the sample is compared to a color chart in order to estimate the disinfectant concentration within a reasonable degree of accuracy.

GLOSSARY

Chlorination: Disinfection by adding chlorine.

Chloramination: Disinfection by adding a mixture of chlorine and ammonia.

Coliform bacteria: Group of bacteria that indicate the possibility of contamination in a water supply. A subclass of the coliform group, fecal coliform bacteria, indicate possible contamination from intestinal sources.

Corrosion control facility: Water quality facility that helps to stabilize both the water's pH and alkalinity by adding soda ash and carbon dioxide.

Cryptosporidium: Microscopic protozoa which, when ingested, can result in diarrhea and other flu-like symptoms.

Escherichia coli (E. coli): A bacterium that is a primary indicator of fecal contamination in a water supply. *E. coli* is a member of the coliform group of bacteria.

Giardia lamblia: Microscopic protozoa which, when ingested, can result in diarrhea and other flu-like symptoms.

NTU: Nephelometric turbidity unit. A standard measure of turbidity in a water sample.

Pathogens: Disease-causing organisms.

Reservoir: A natural or human-made basin where water is collected and stored in large quantities before being supplied to a community.

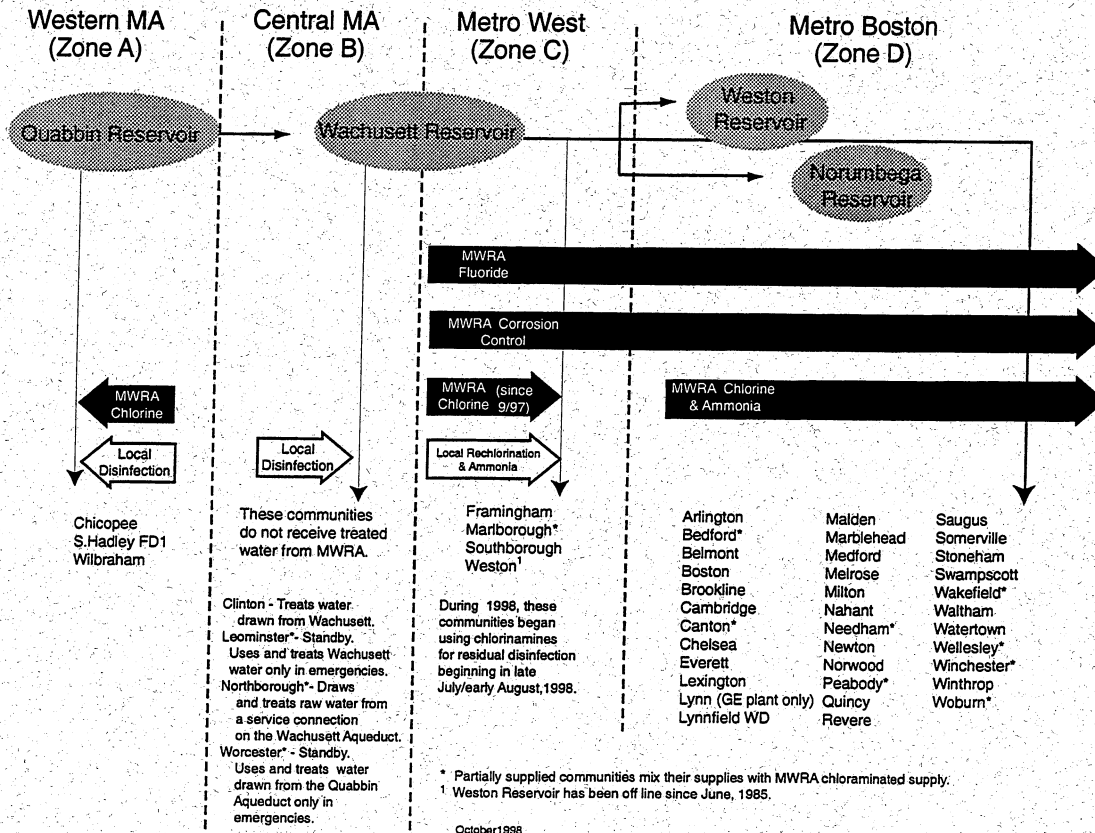
Safe Drinking Water Act (SDWA): Federal drinking water quality regulations.

Total Coliform Rule (TCR): SDWA standard that limits the level of total coliform positive results allowed each month in a community.

Turbidity: Measure of the particulate matter in a water sample.

MWRA WATER SUPPLY AND TREATMENT

Communities that are fully supplied by MWRA receive water treated with chloramines. In those communities that are partially supplied by MWRA, information on treatment should be obtained from the local water department. To view the level of treatment your water has received, locate your community on the chart.



Prepared under the direction of: Douglas B. MacDonald, Executive Director
William A. Brutsch, Waterworks Director, D. Kelly O'Day, Operations Director, Waterworks