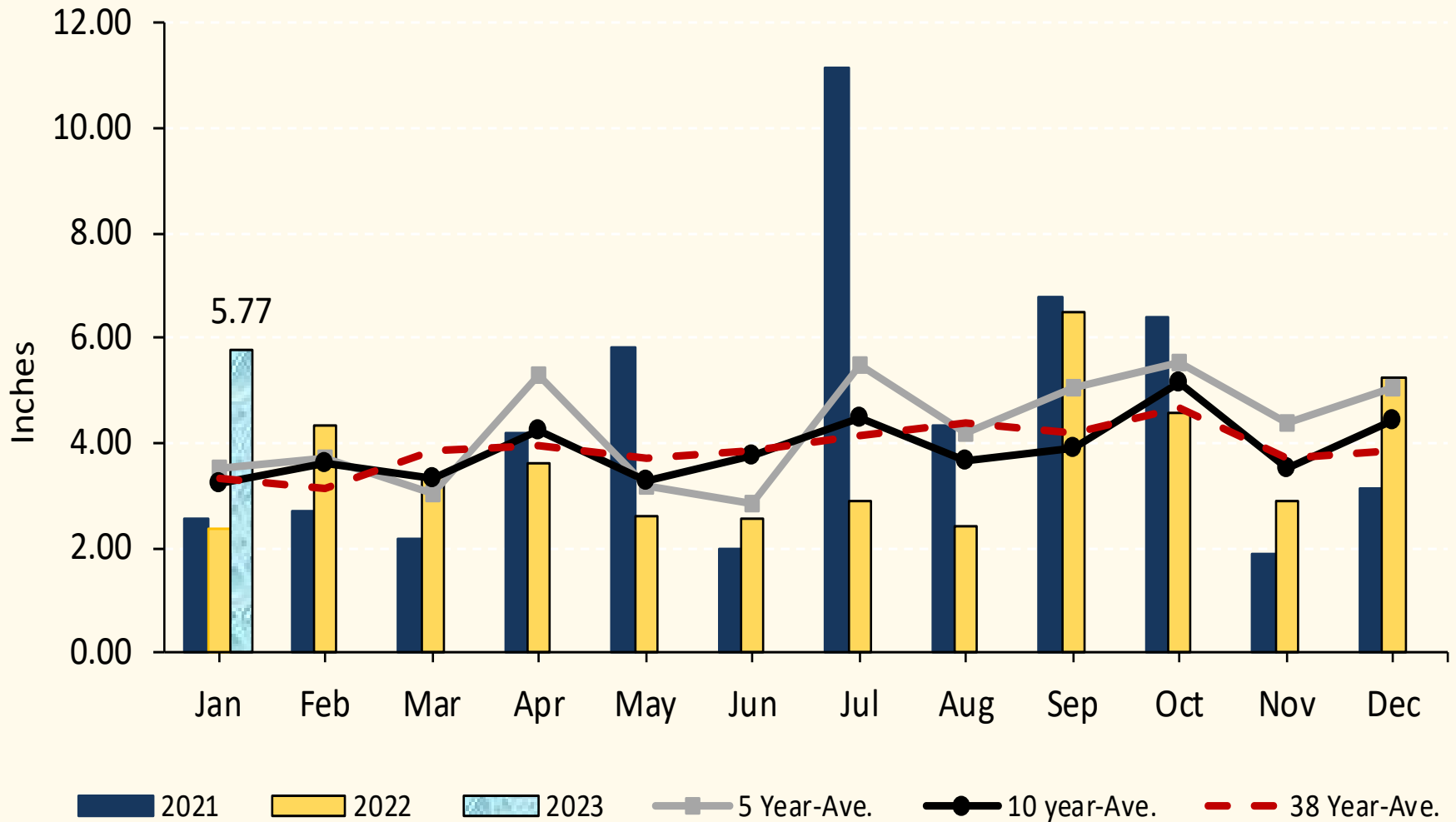




Precipitation

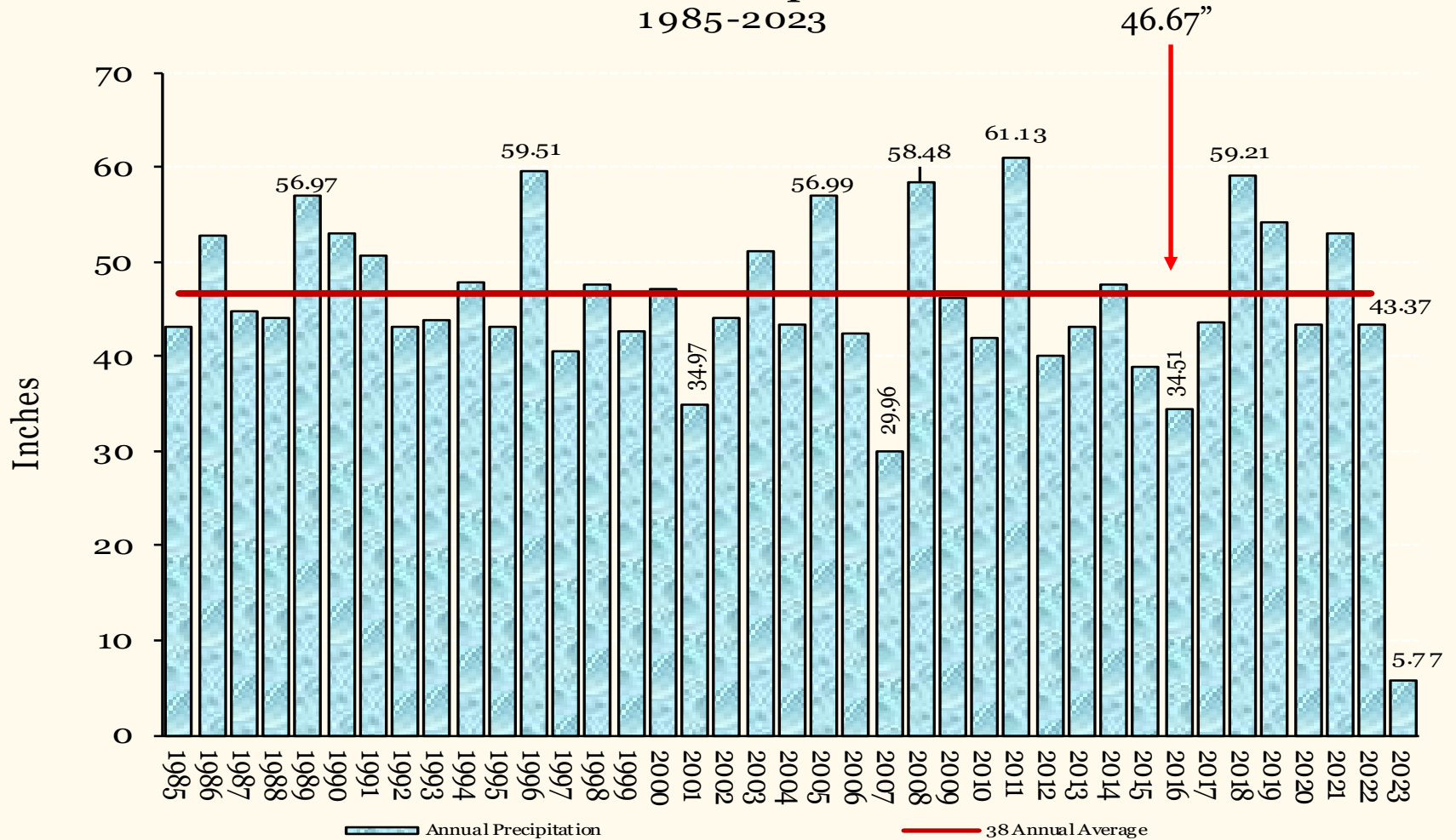
Precipitation





Precipitation

Annual Precipitation 1985-2023

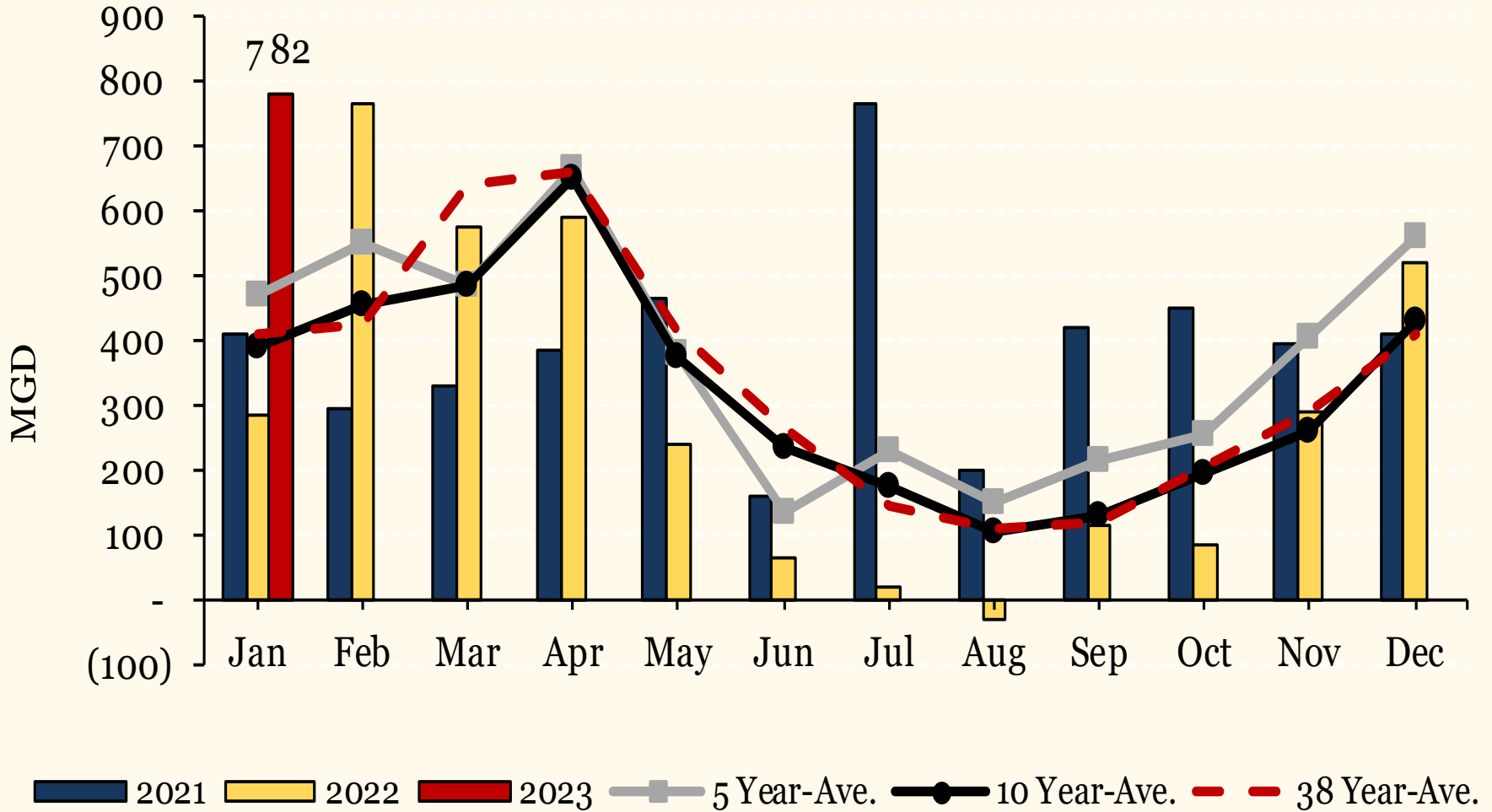




Yield

System Yield is defined as the water produced by its sources, and is reported as the net change in water available for water supply and operating requirements.

System Yield

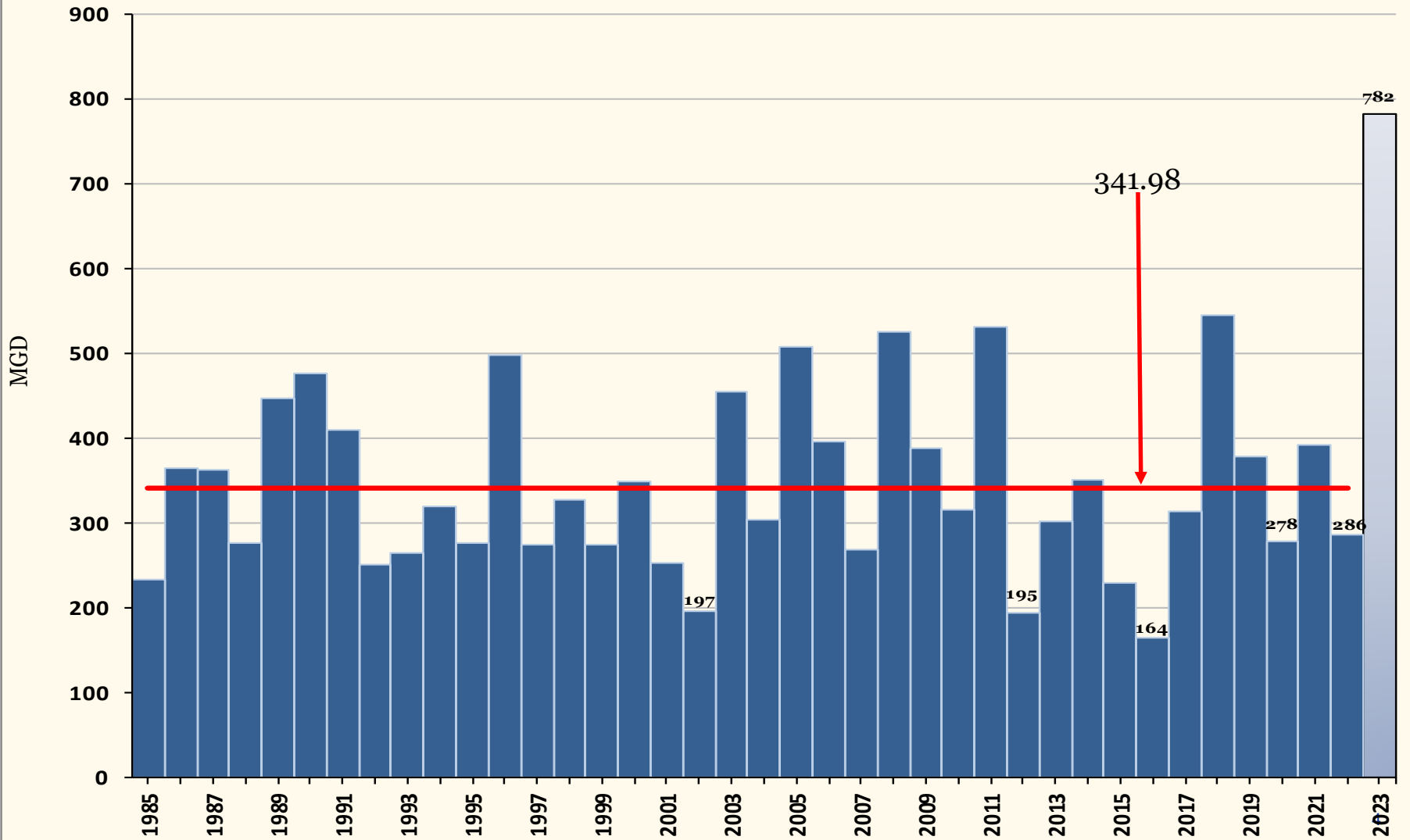




Yield

System Yield is defined as the water produced by its sources, and is reported as the net change in water available for water supply and operating requirements.

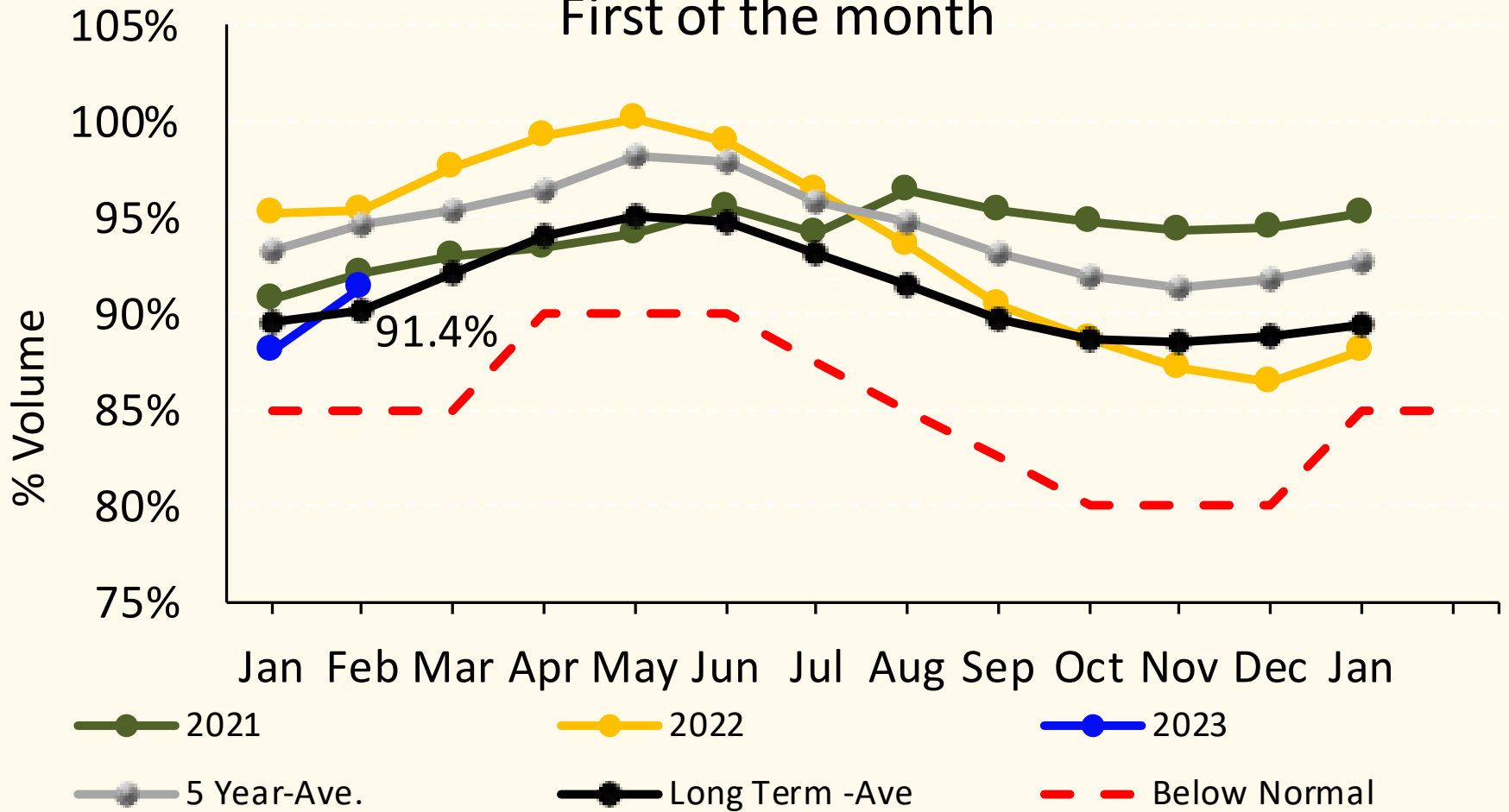
Annual Yield 1985 - 2023





Quabbin Reservoir

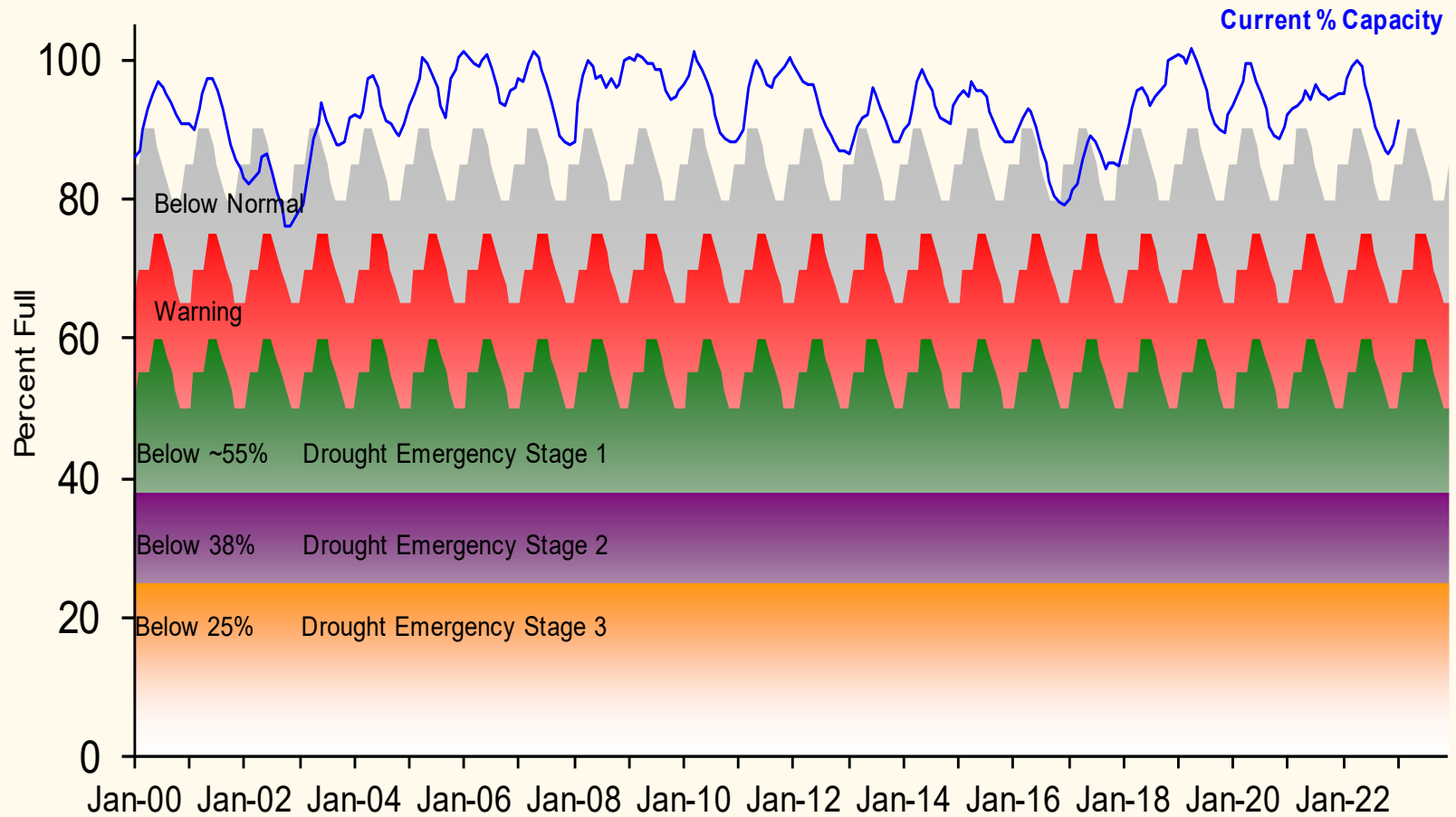
Quabbin Reservoir Volume First of the month





Quabbin Reservoir Levels

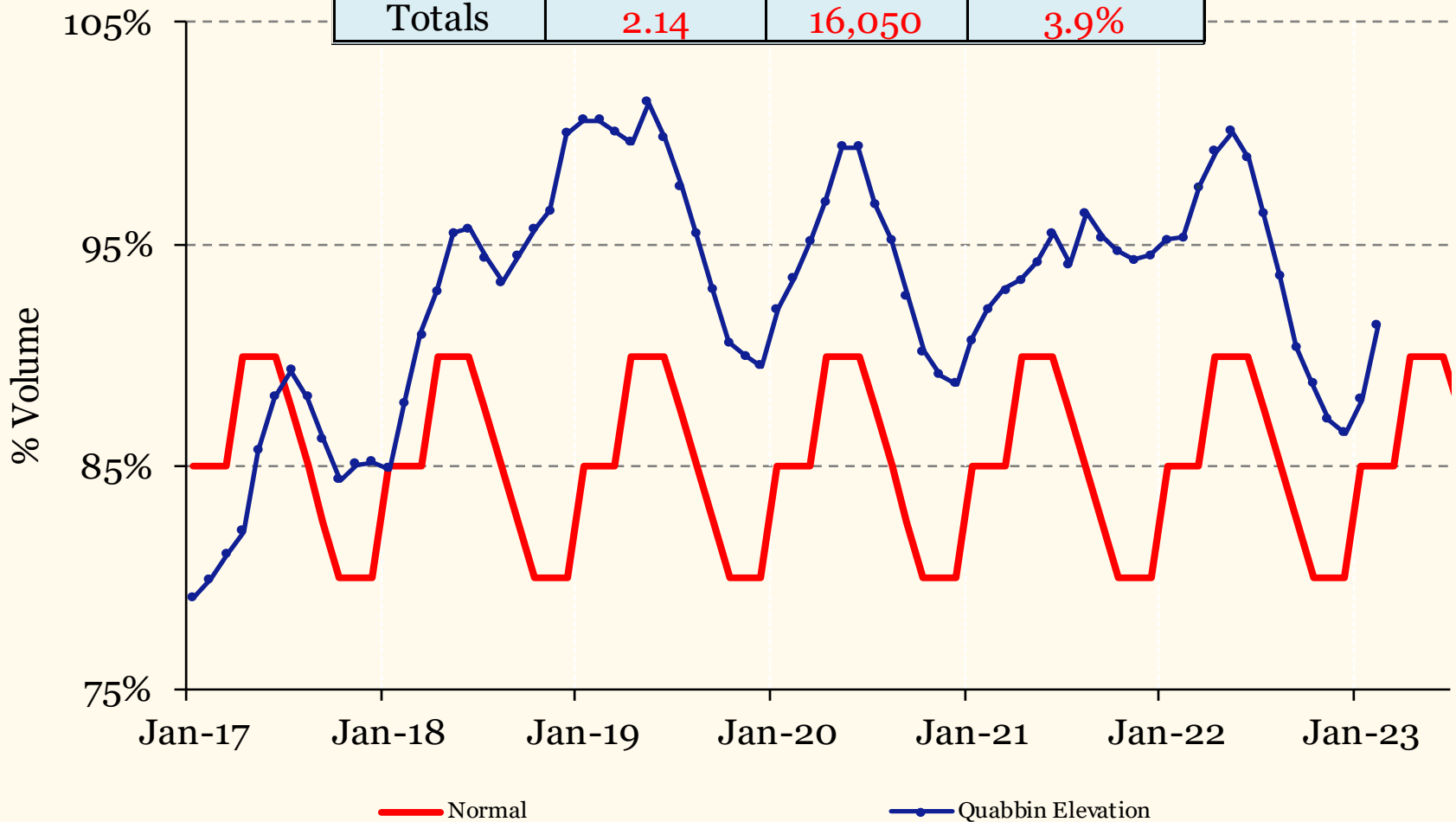
With Drought Emergency Planning Stages





Quabbin Reservoir

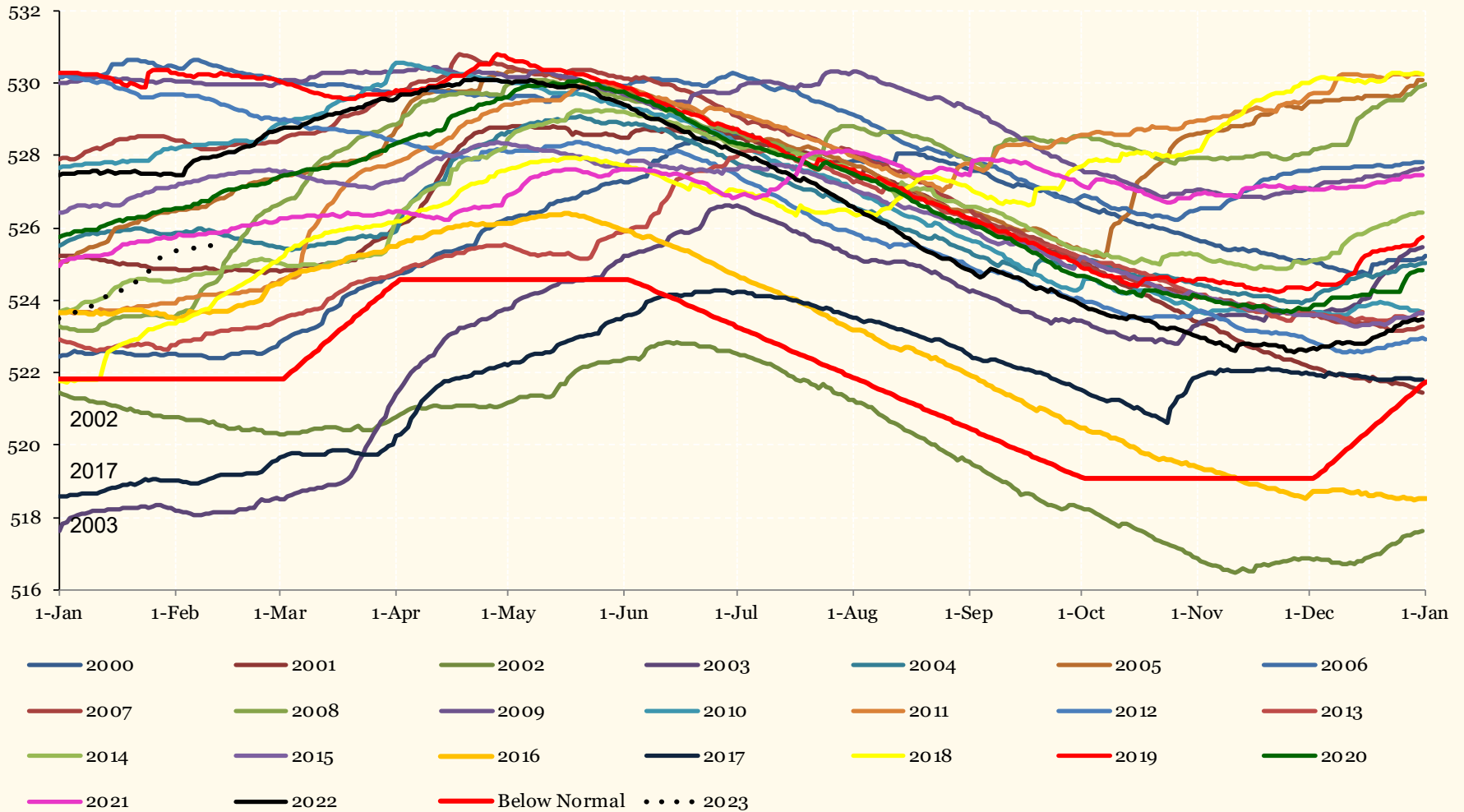
Date	Elevation	Volume	% Volume
2/14/23	525.62	378,750	91.9%
1/1/23	523.48	362,700	88.0%
Totals	2.14	16,050	3.9%





Quabbin Reservoir

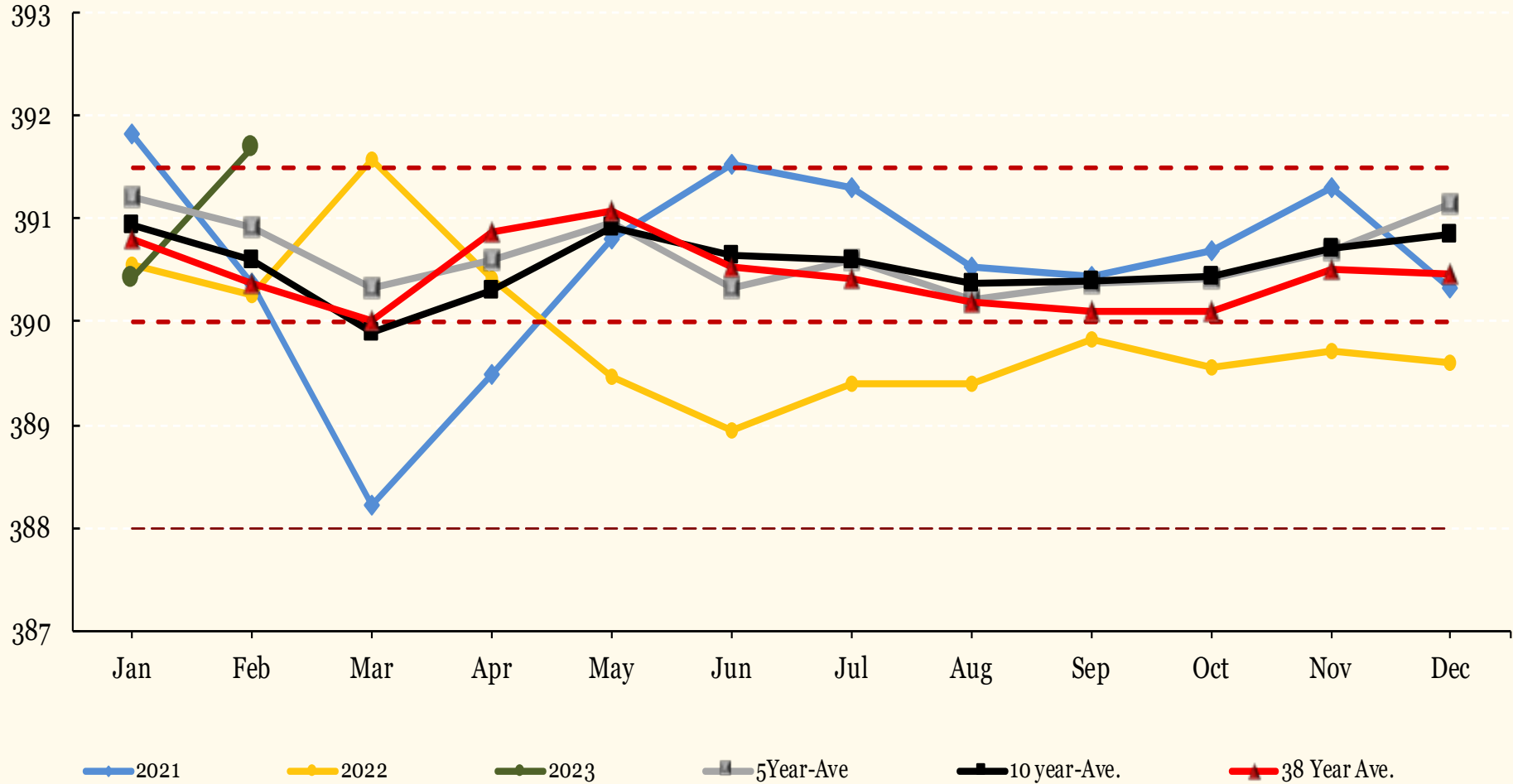
Quabbin Reservoir





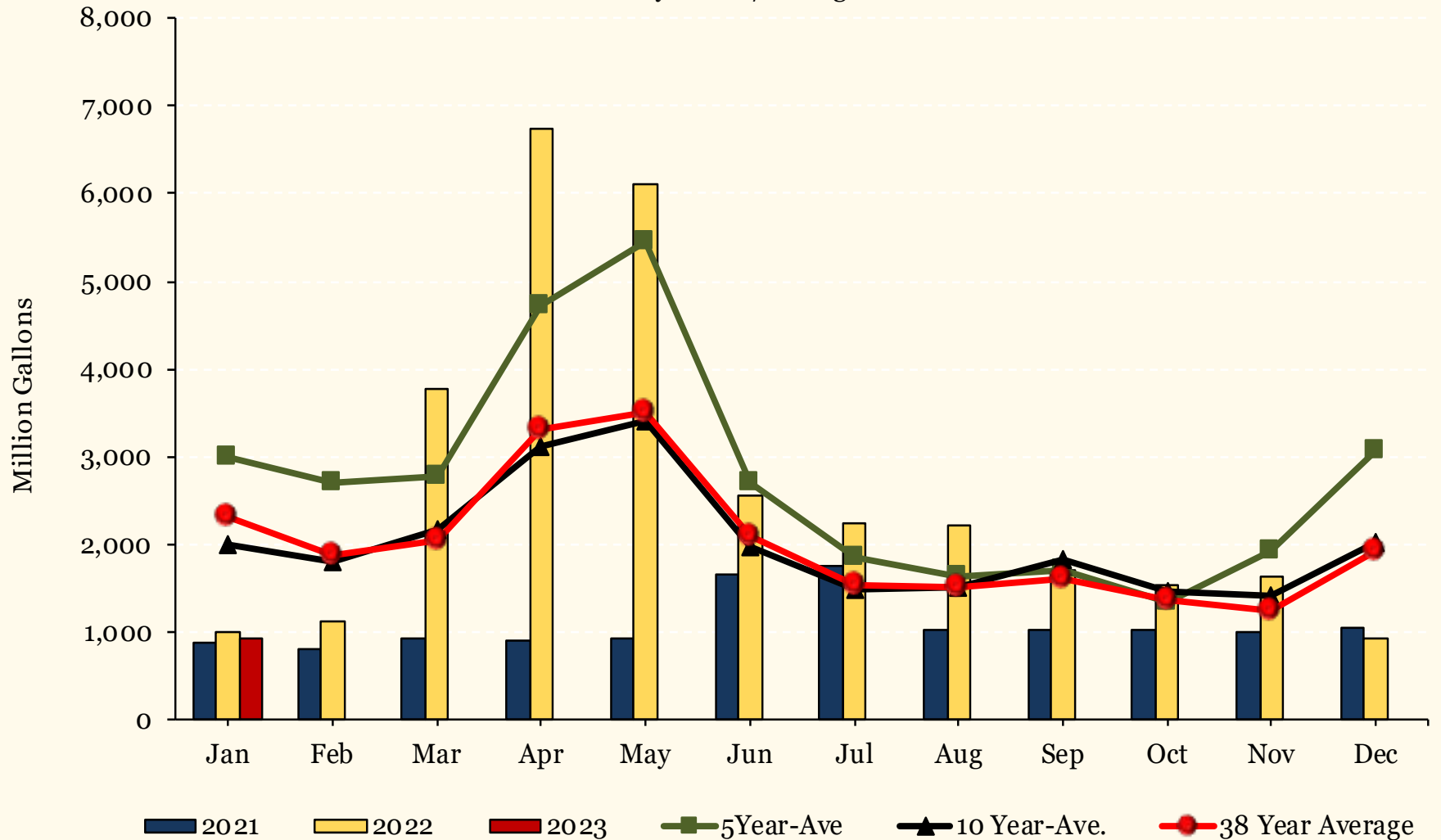
Wachusett Reservoir

Wachusett Reservoir Elevation





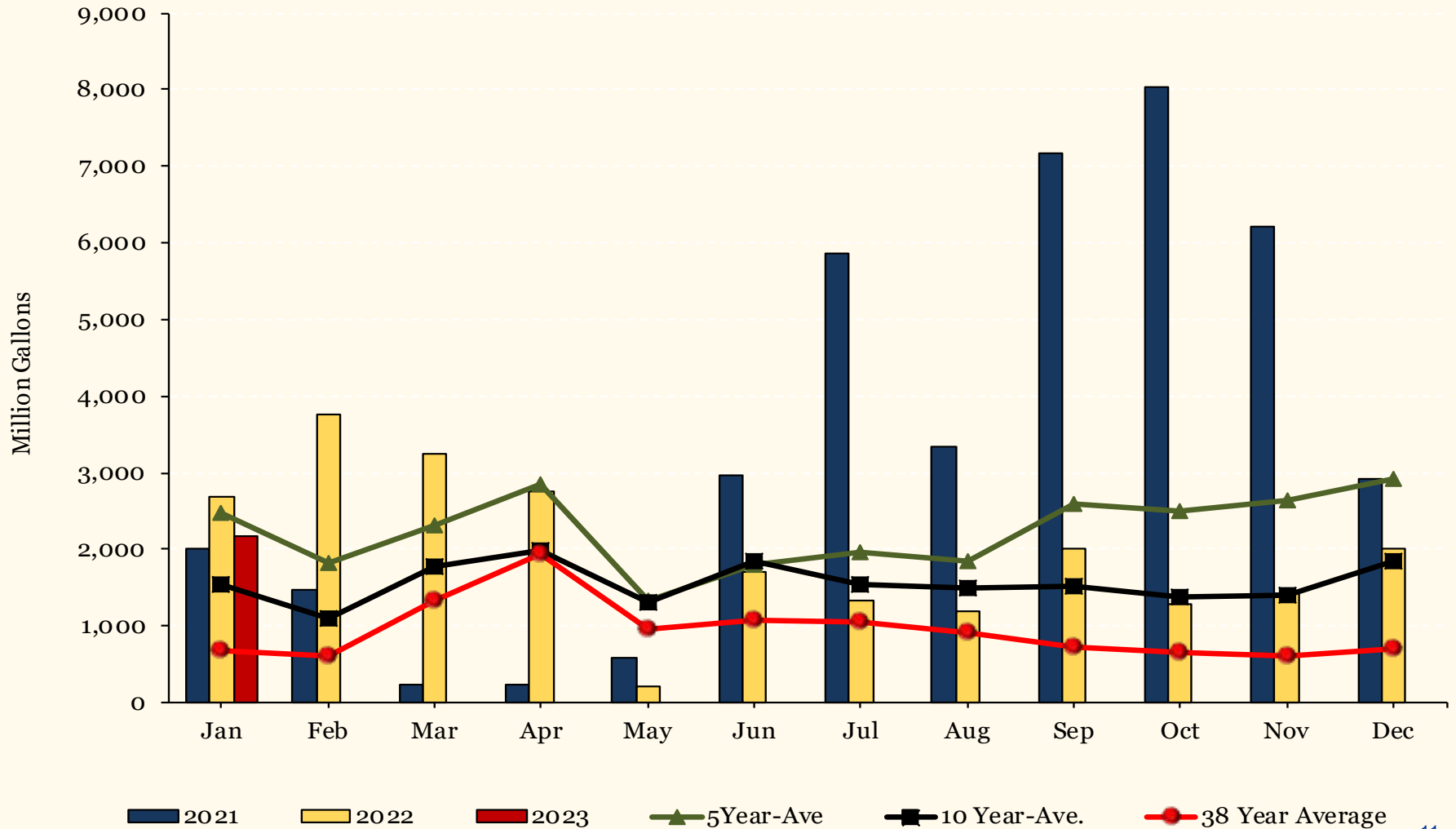
Swift River Release Monthly Totals/Averages





Nashua River

Nashua River Release Monthly Totals/Averages



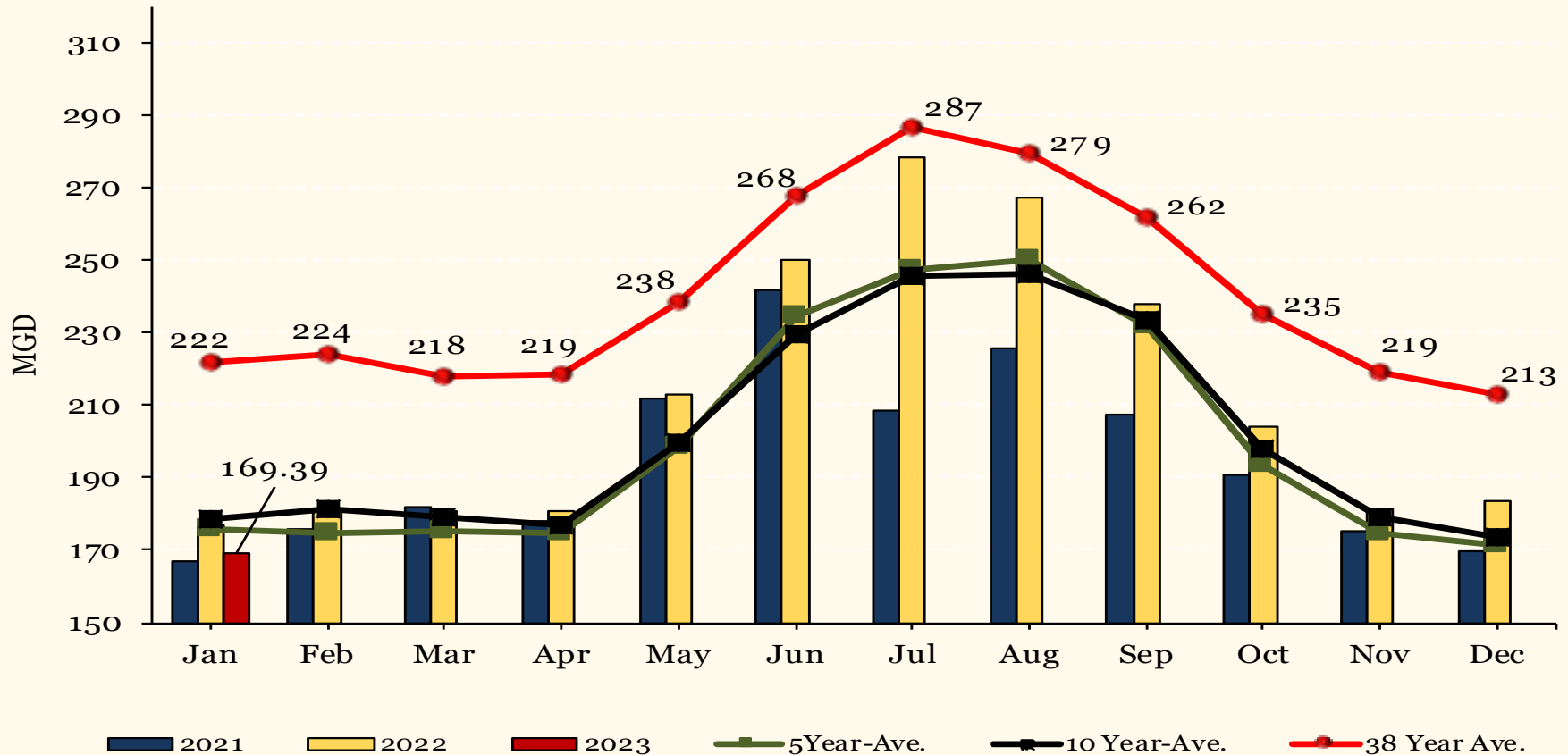


Daily Withdrawal

Daily Withdrawal

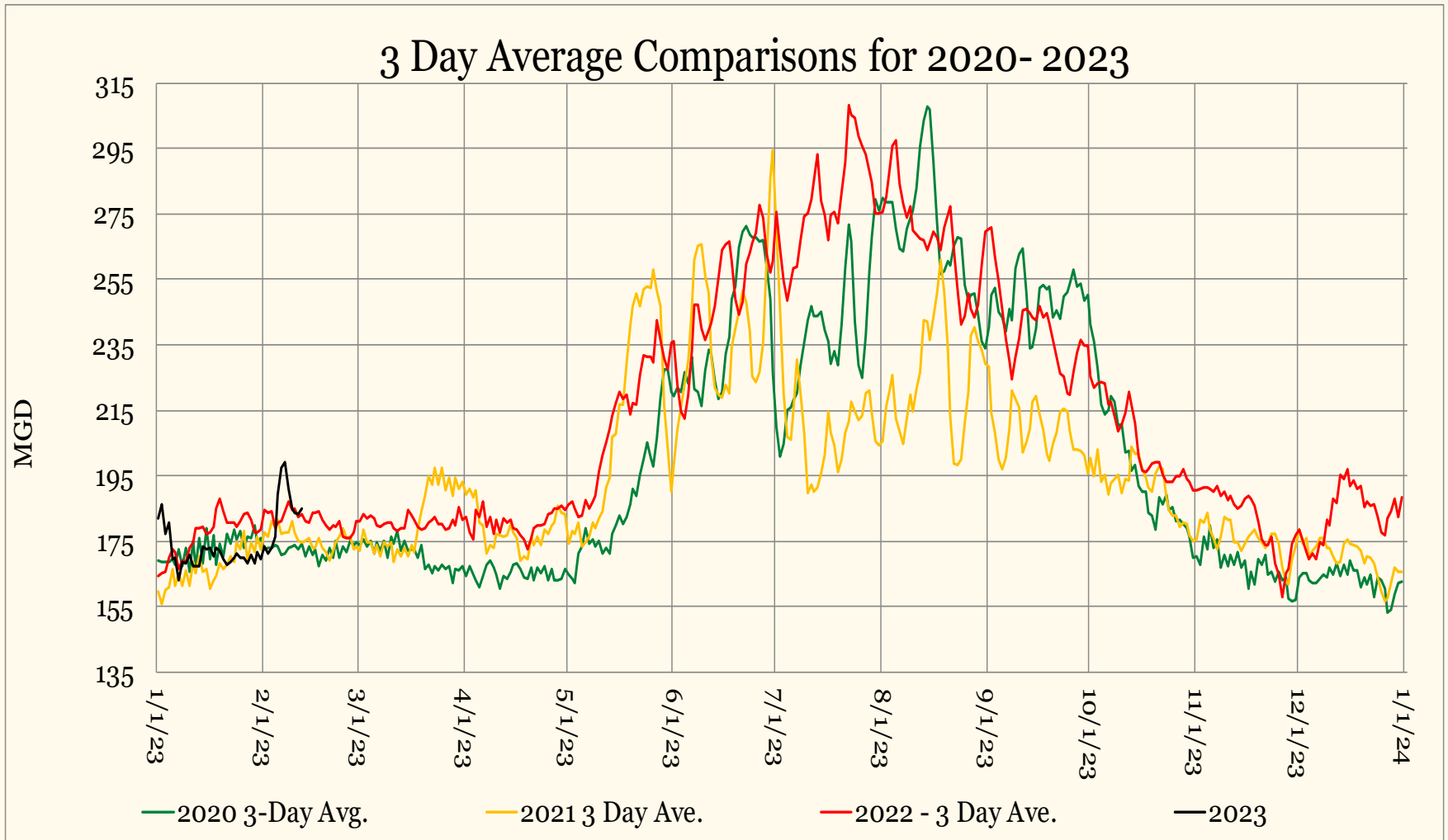
CWTP + NCST Delta + CVA + Quinapoxet Withdrawal + Clinton + Leominster + Worcester

Daily Withdrawal
Monthly Average





Daily Withdrawal





Sudbury & Foss Reservoirs

