

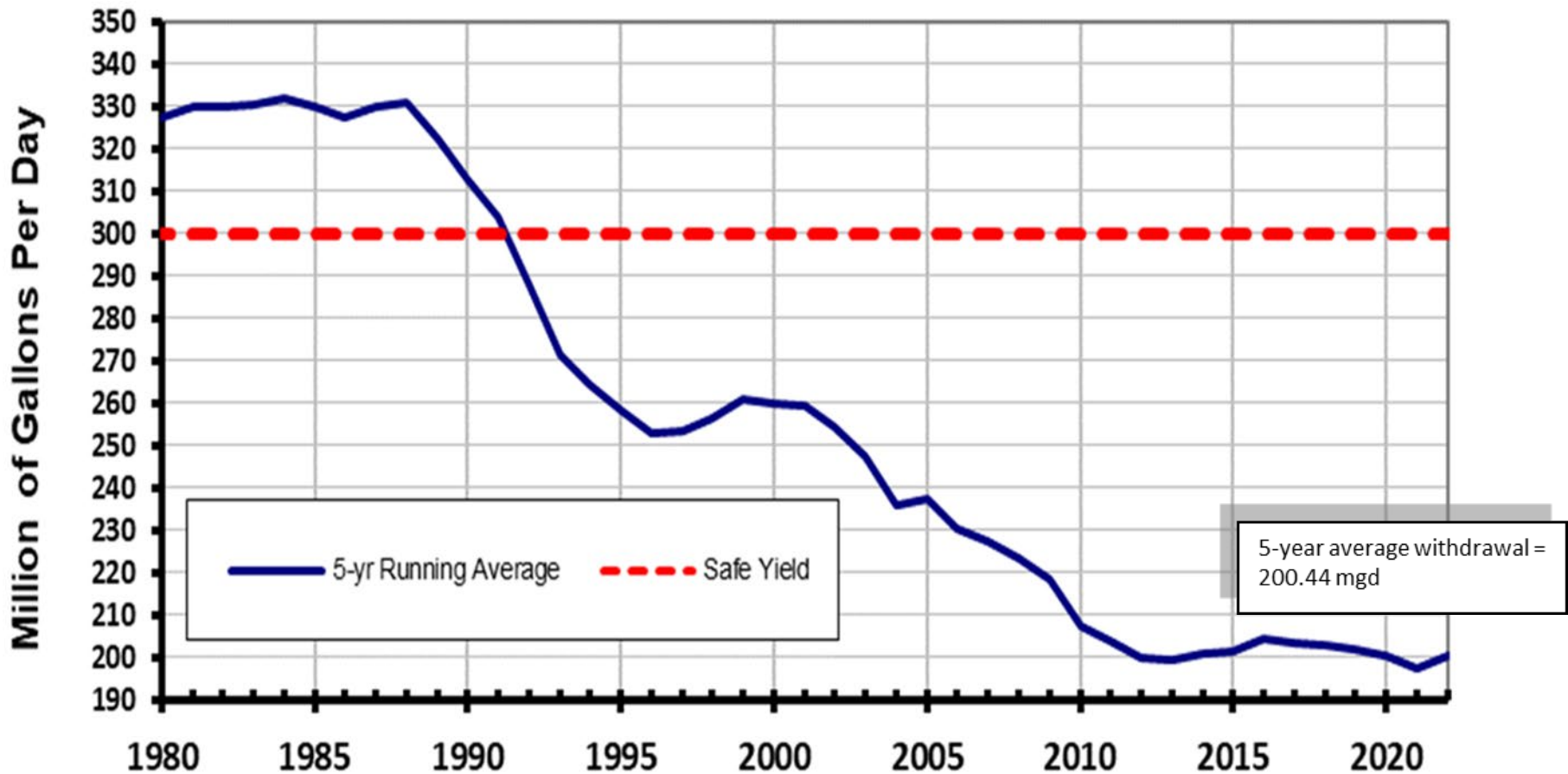


***Update on MWRA's
System Expansion Efforts***

October 18, 2023



Reservoir Withdrawals from 1980 to 2022





Status of Recent Inquiries

- Partially Supplied Communities Considering Increasing Supply
 - Wellesley
 - Wilmington
- Communities have Received Approval to Pursue Admission from Governing Body
 - Hopkinton
 - Lynnfield Center Water District (currently undergoing MEPA review)
 - Natick
 - Wayland
- Various Stages in Decision-Making Process
 - Avon
 - Billerica
 - Hingham
 - North Sherborn Water and Wastewater District (proposed)
 - Select MetroWest Communities
 - Walpole
 - Weymouth/Former Naval Air Station



Next Steps: Shaft L Connection

- Connection Options for potential expansion to the North and South
 - Existing Distribution Mains
 - Stub at Shaft 7D
- Connection Options in MetroWest are limited with minimal capacity
 - New Connection at Shaft L



Figure 1. Existing Configuration of Shaft L

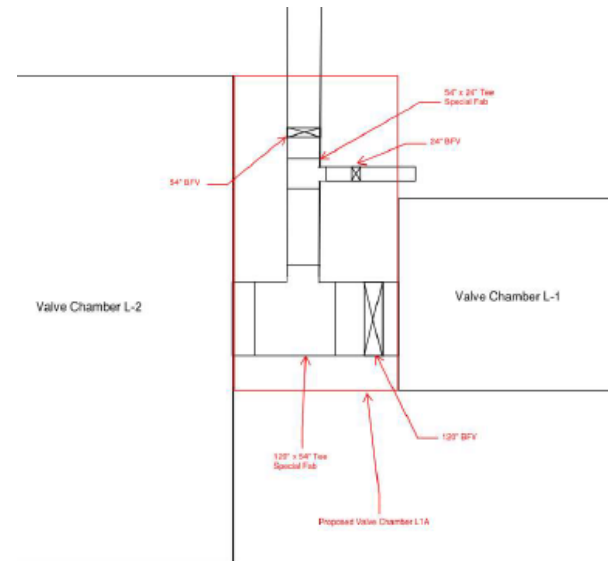


Figure 2. Conceptual new Connection at Shaft L