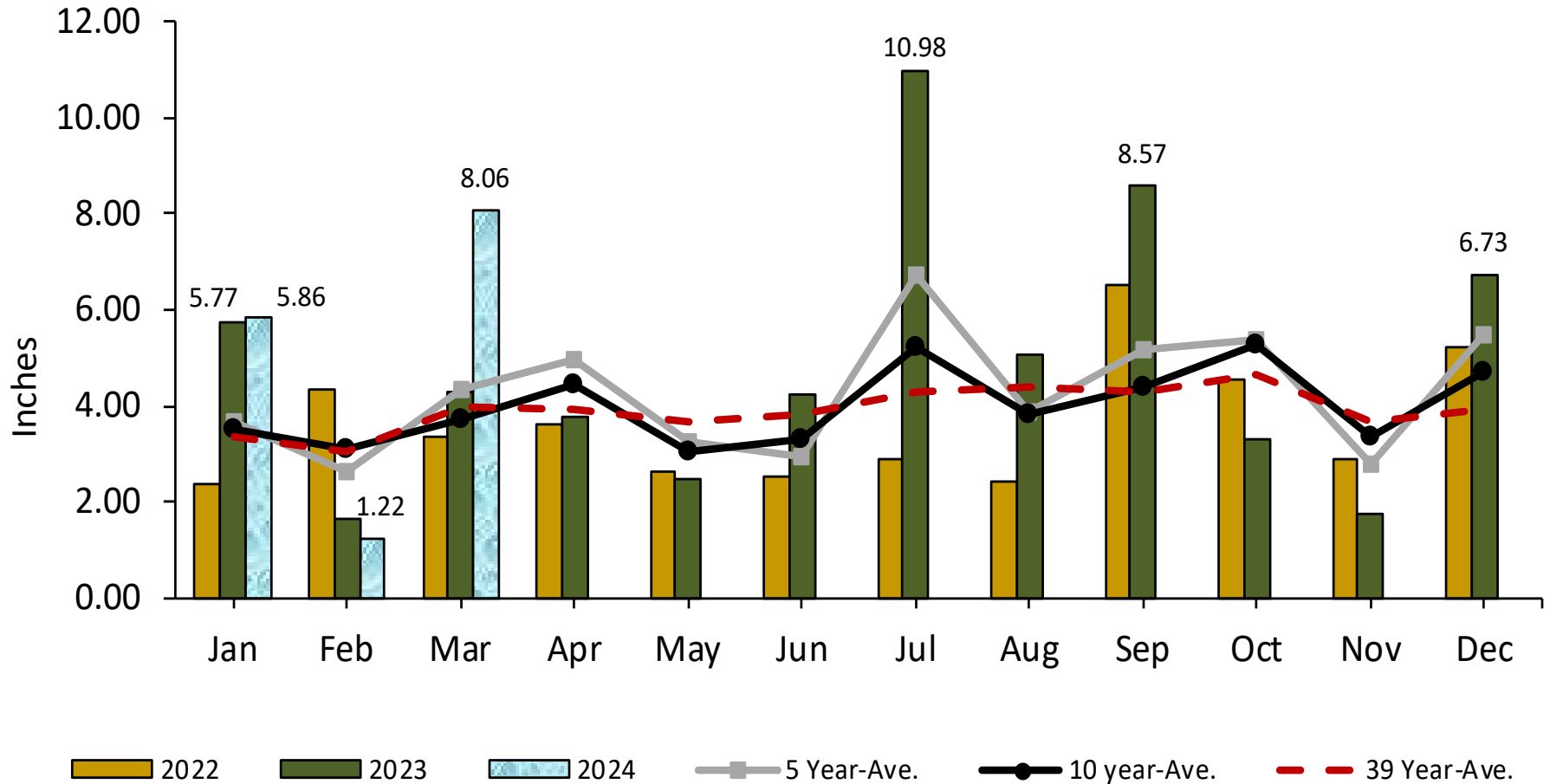




Precipitation

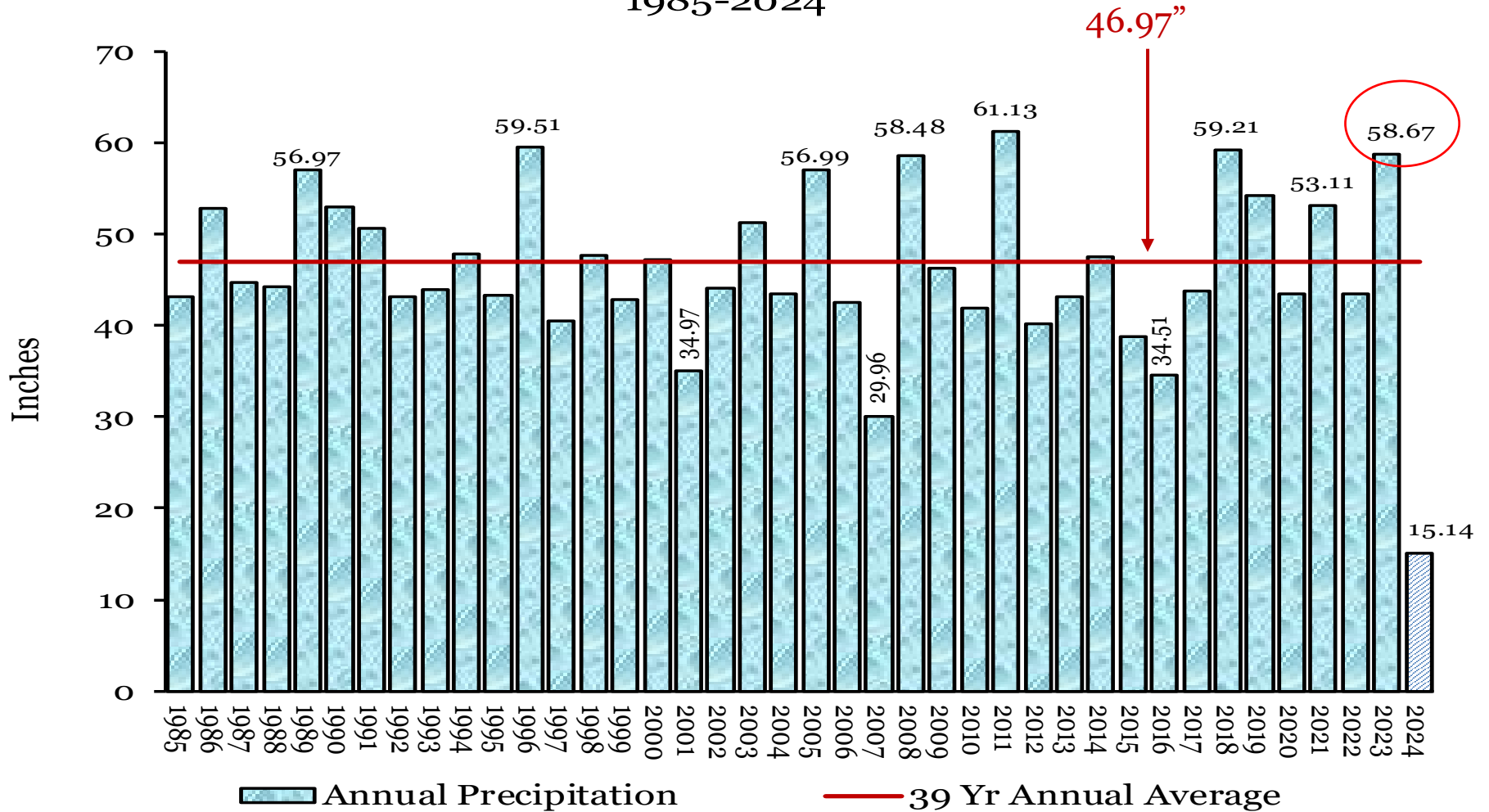
Precipitation





Precipitation

Annual Precipitation 1985-2024

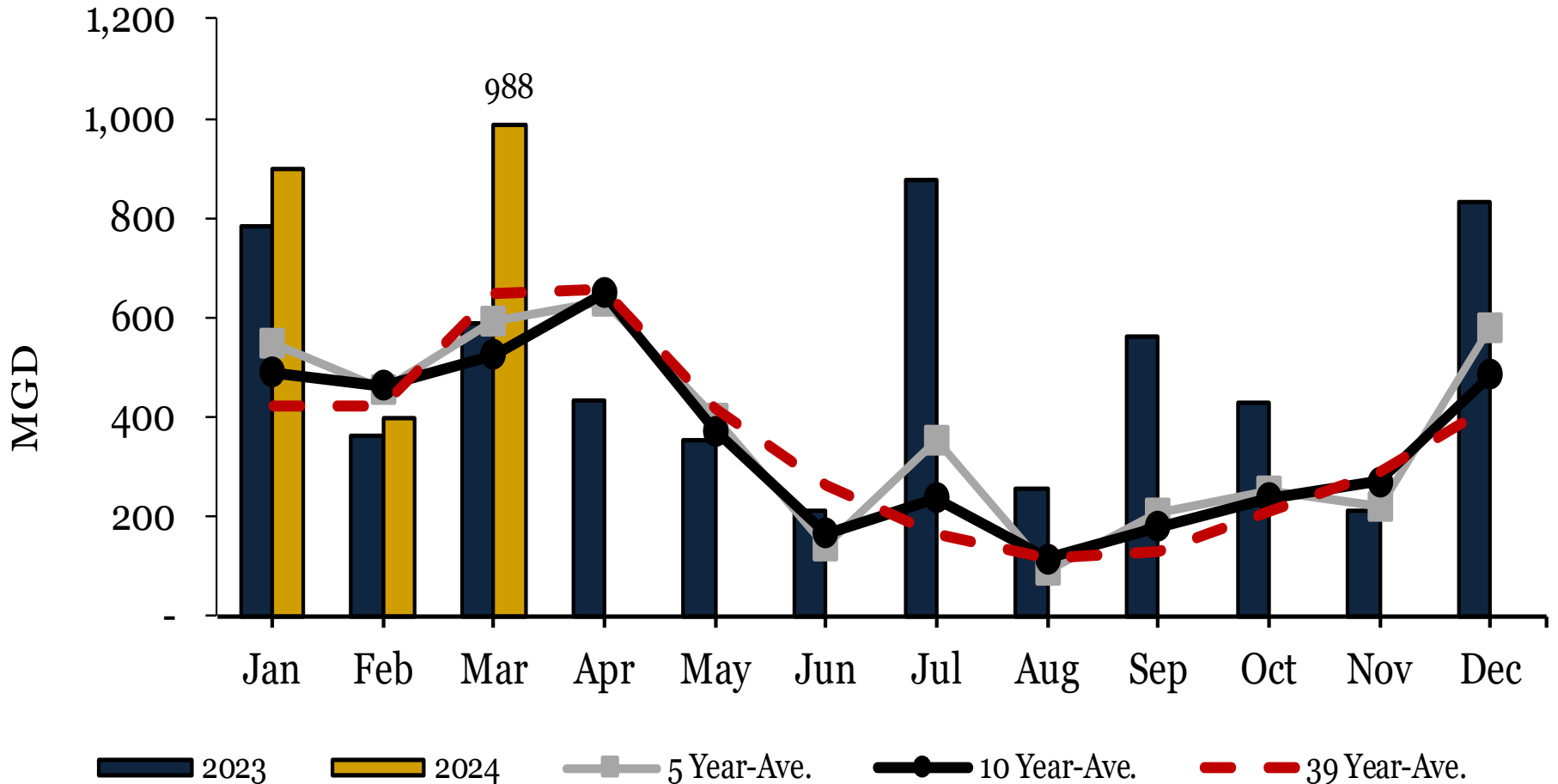




Yield

System Yield is defined as the water produced by its sources, and is reported as the net change in water available for water supply and operating requirements.

System Yield

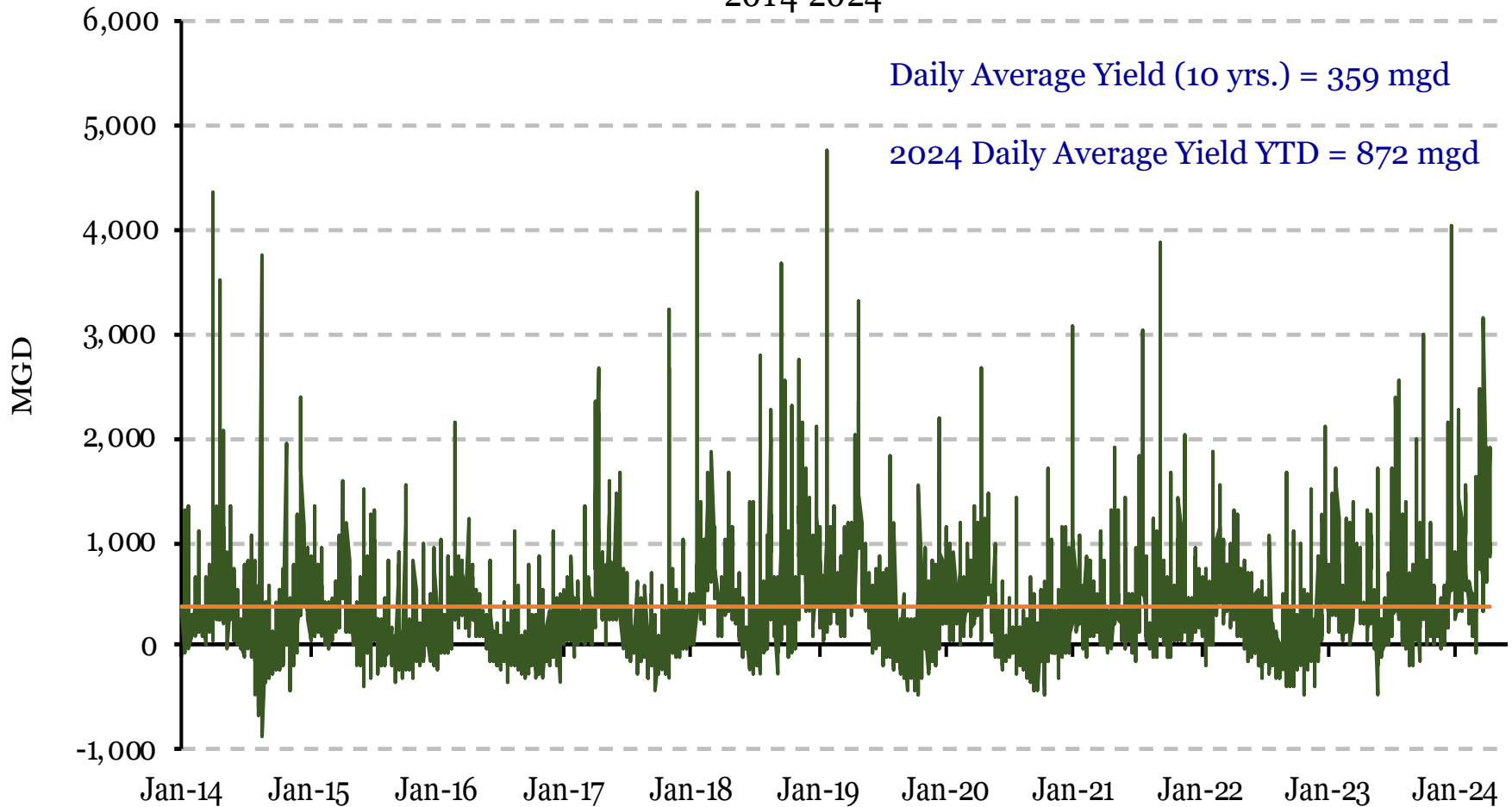




Yield

System Yield is defined as the water produced by its sources, and is reported as the net change in water available for water supply and operating requirements.

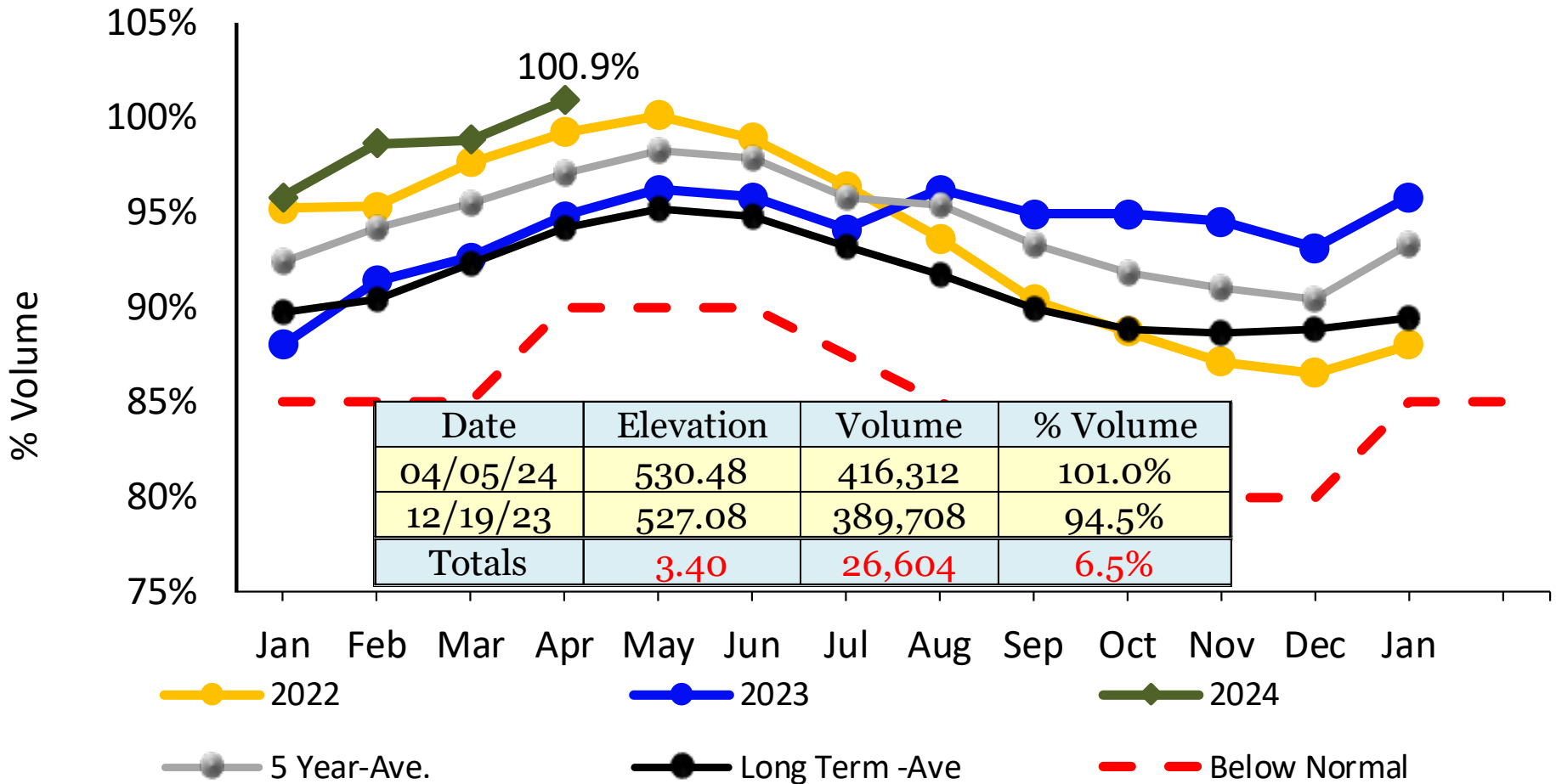
Daily Yield - Combined Watersheds 2014-2024





Quabbin Reservoir

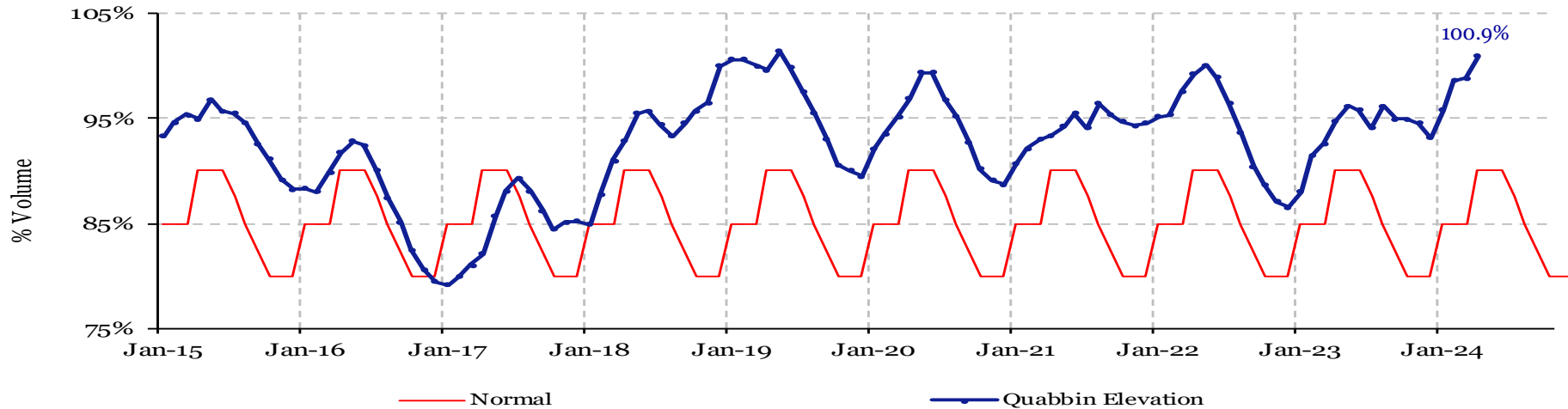
Quabbin Reservoir Volume First of the month



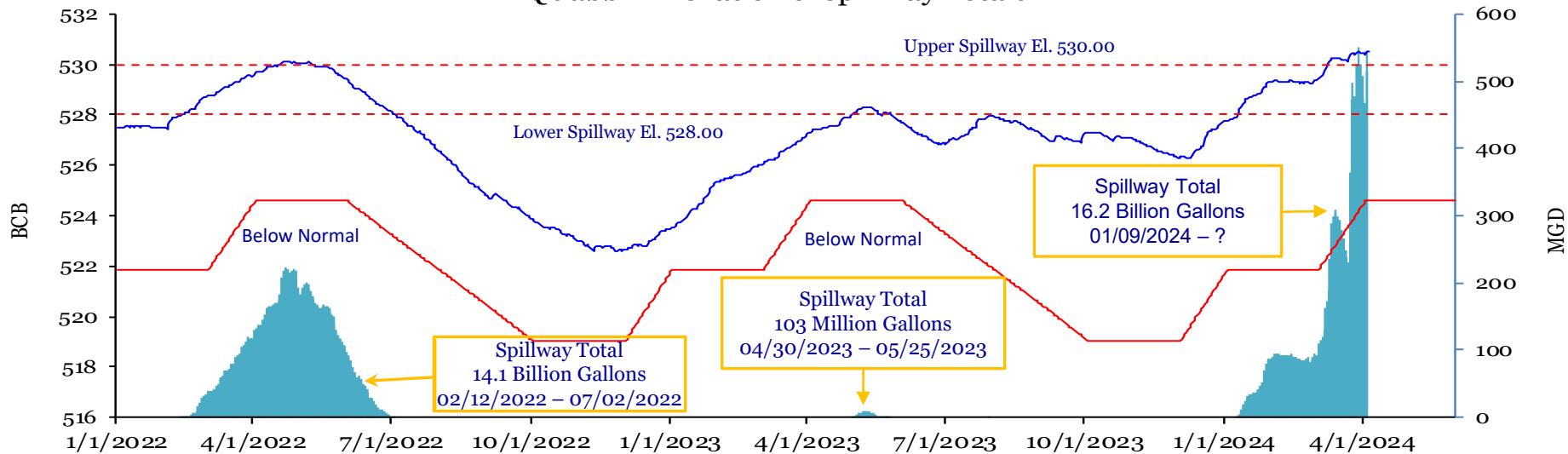


Quabbin Reservoir

Quabbin Reservoir Volume



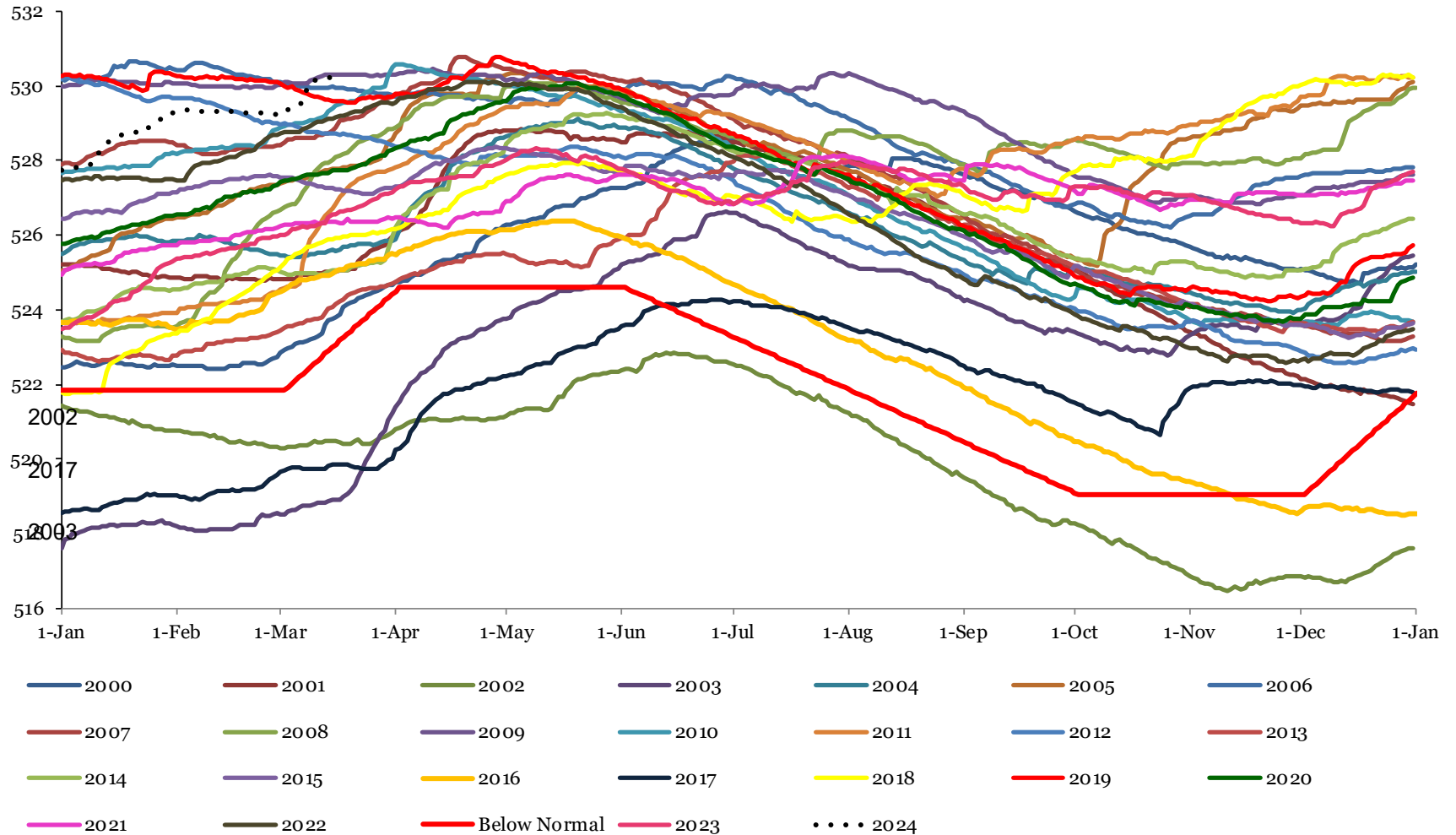
Quabbin Elevation & Spillway Totals





Quabbin Reservoir

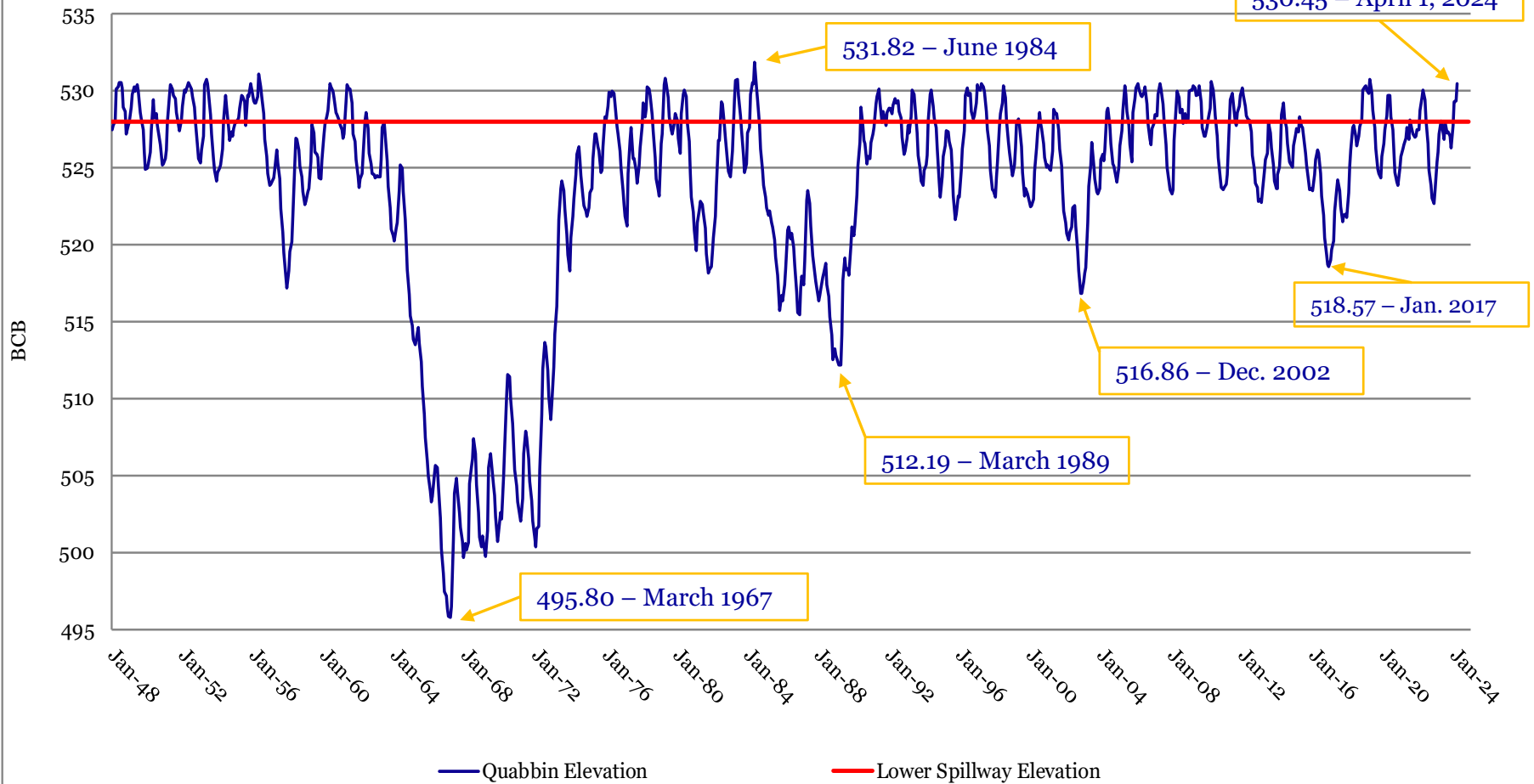
Quabbin Reservoir





Quabbin Reservoir

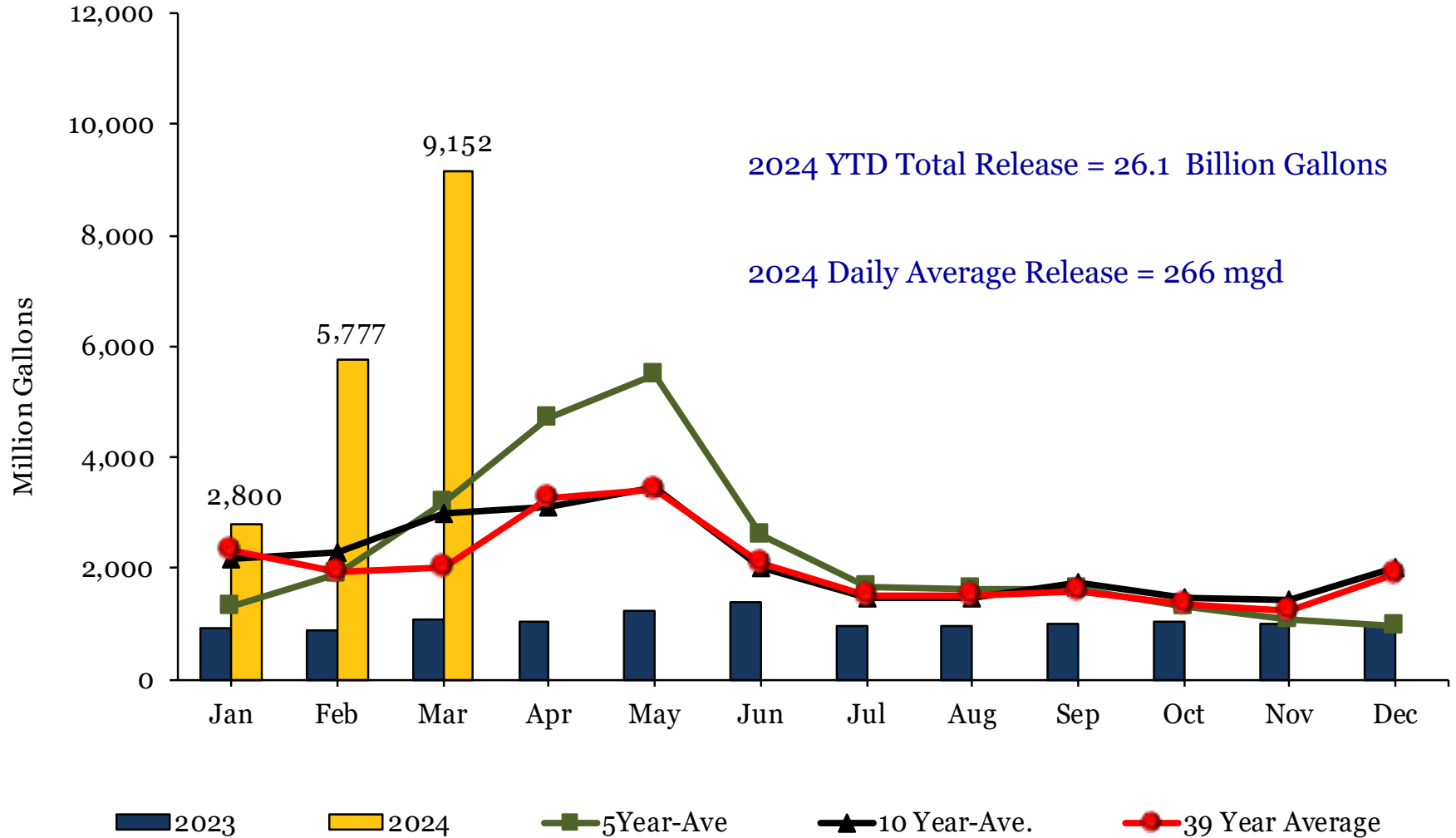
Quabbin Reservoir Elevation Jan 1948 - April 2024





Swift River

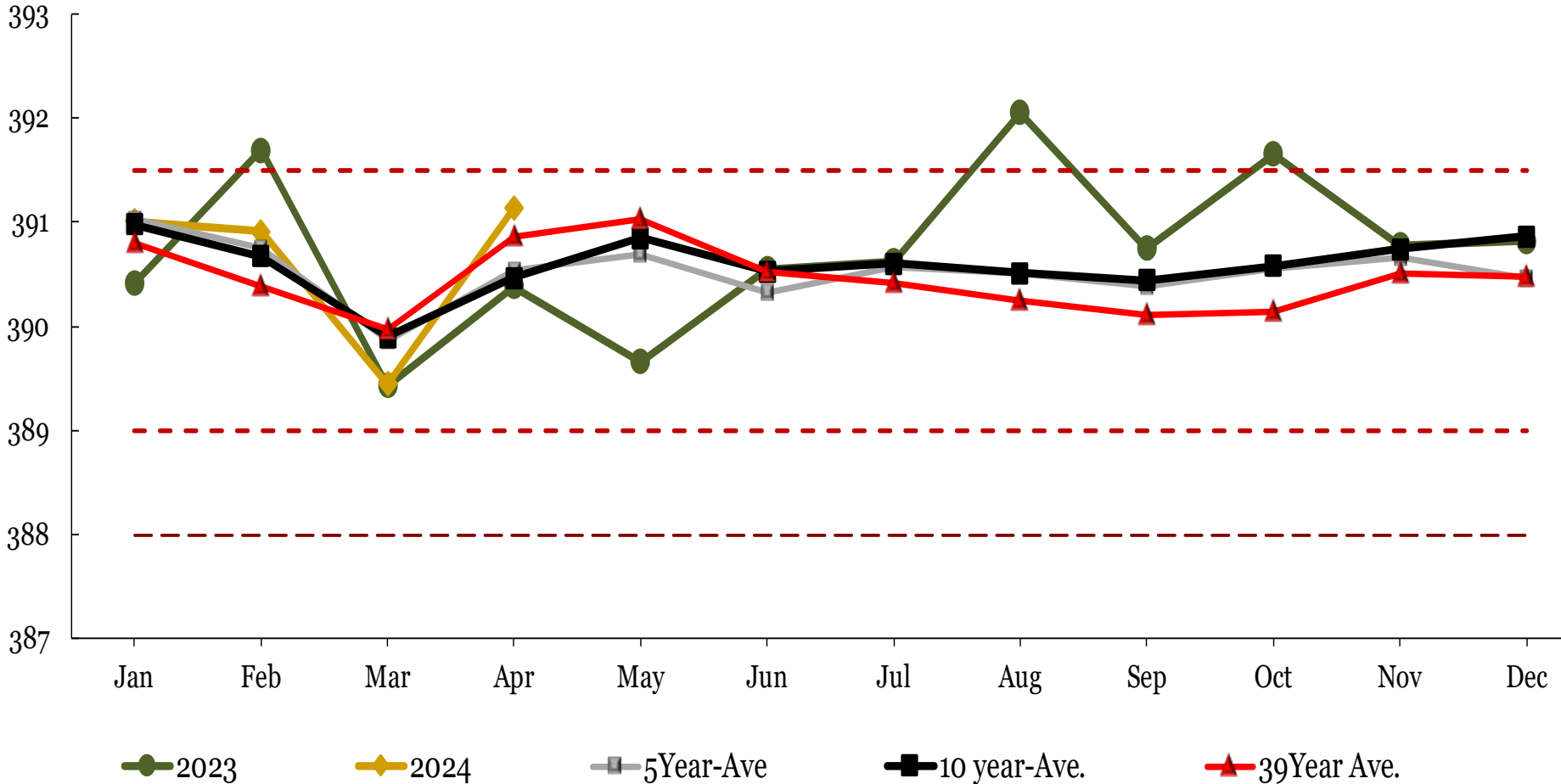
Swift River Release Monthly Totals/Averages





Wachusett Reservoir

Wachusett Reservoir Elevation

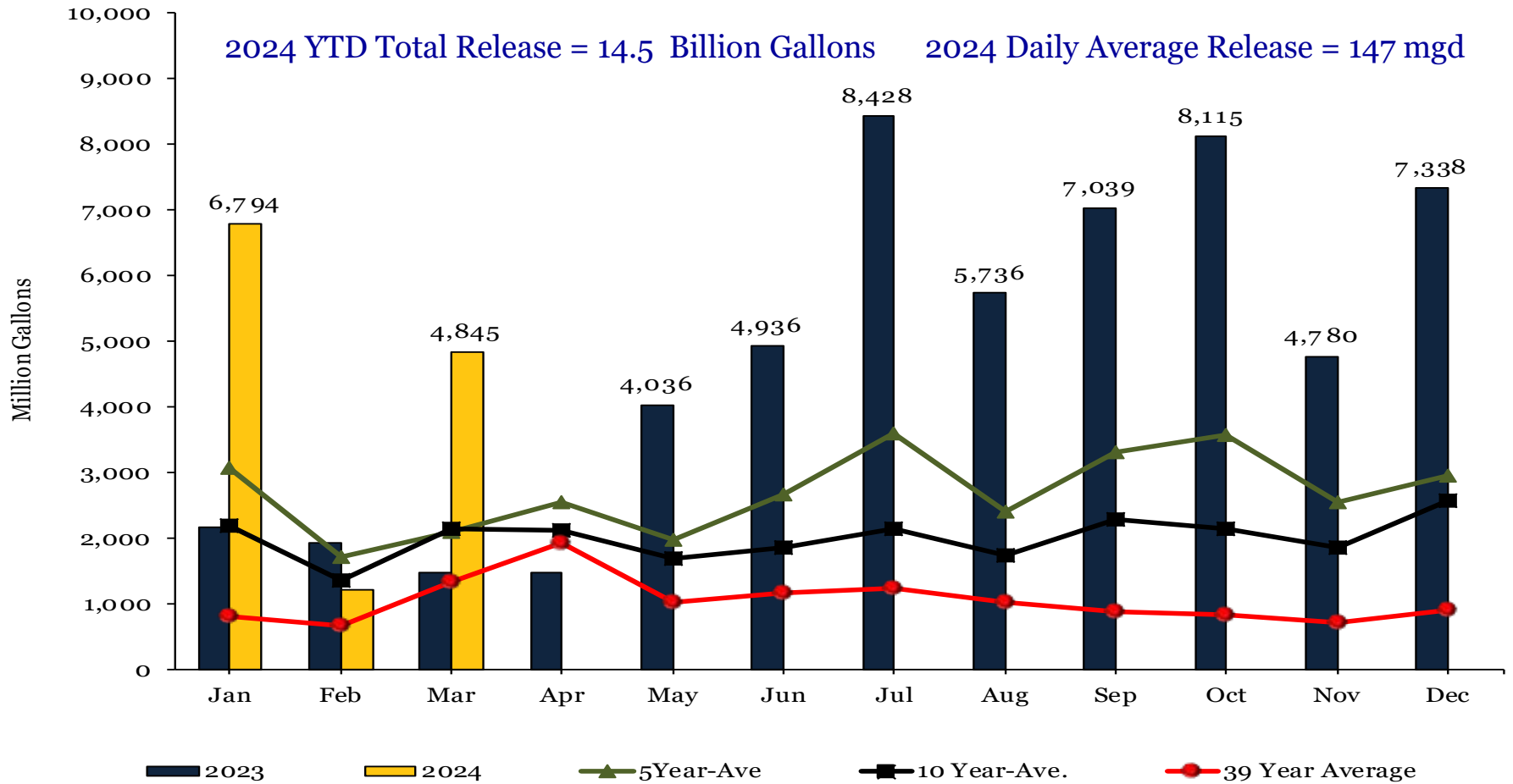




Nashua River

Nashua River Release
Monthly Totals/Averages

2024 YTD Total Release = 14.5 Billion Gallons 2024 Daily Average Release = 147 mgd

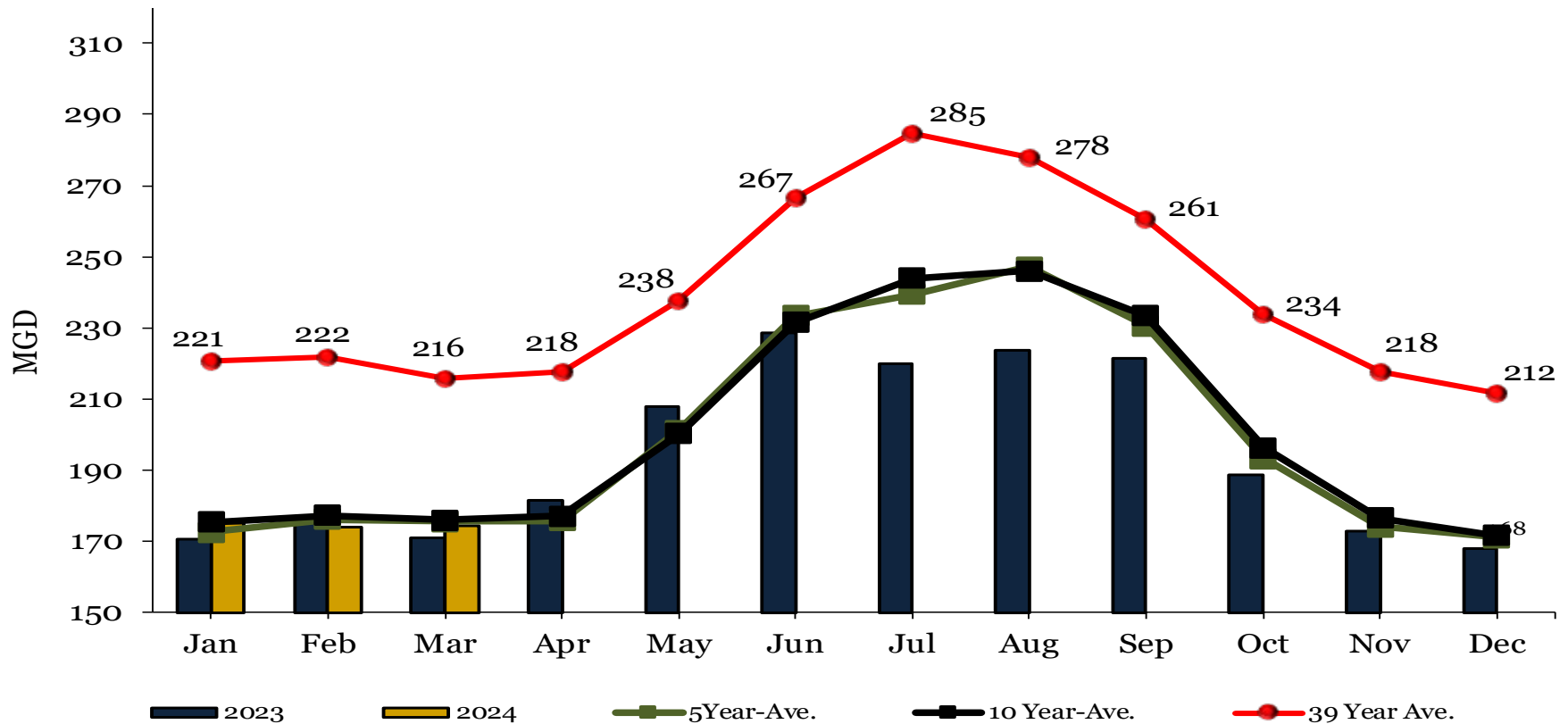




Daily Withdrawal

Daily Withdrawal
CWTP + NCST Delta + CVA + Quinapoxet Withdrawal + Clinton + Leominster + Worcester

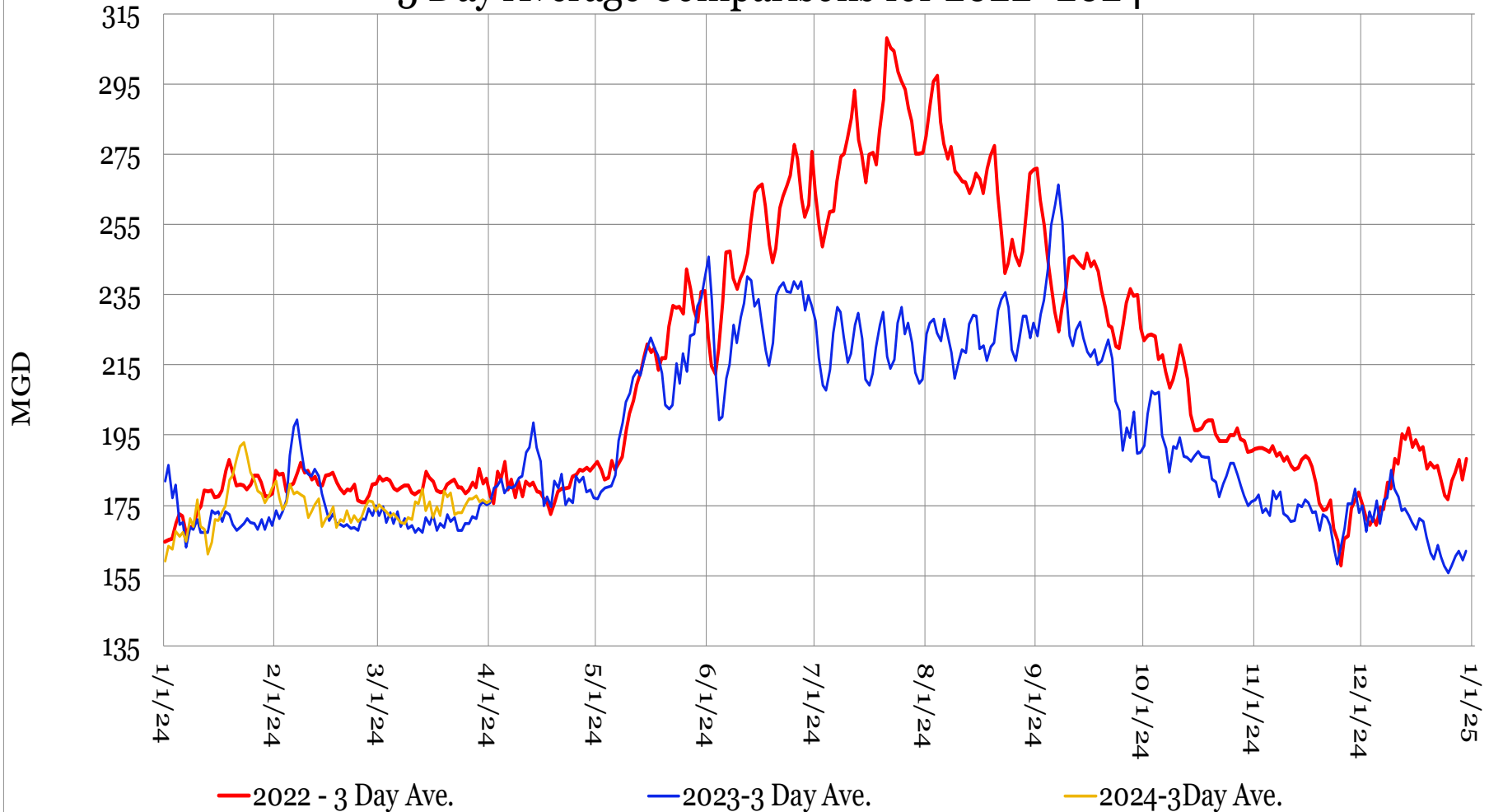
Daily Withdrawal Monthly Average





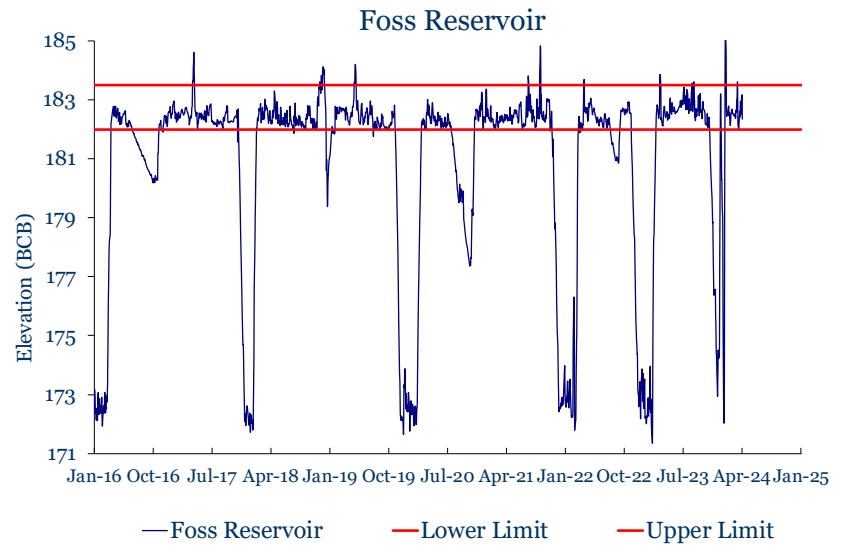
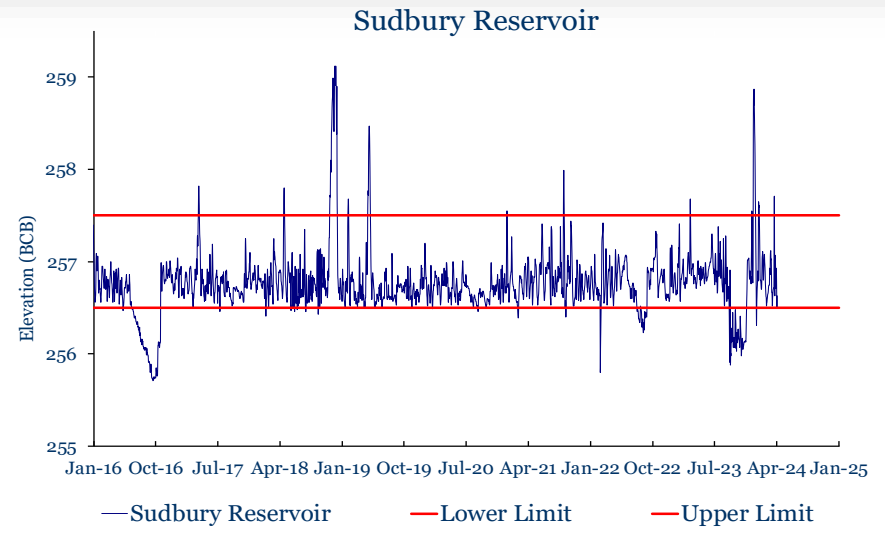
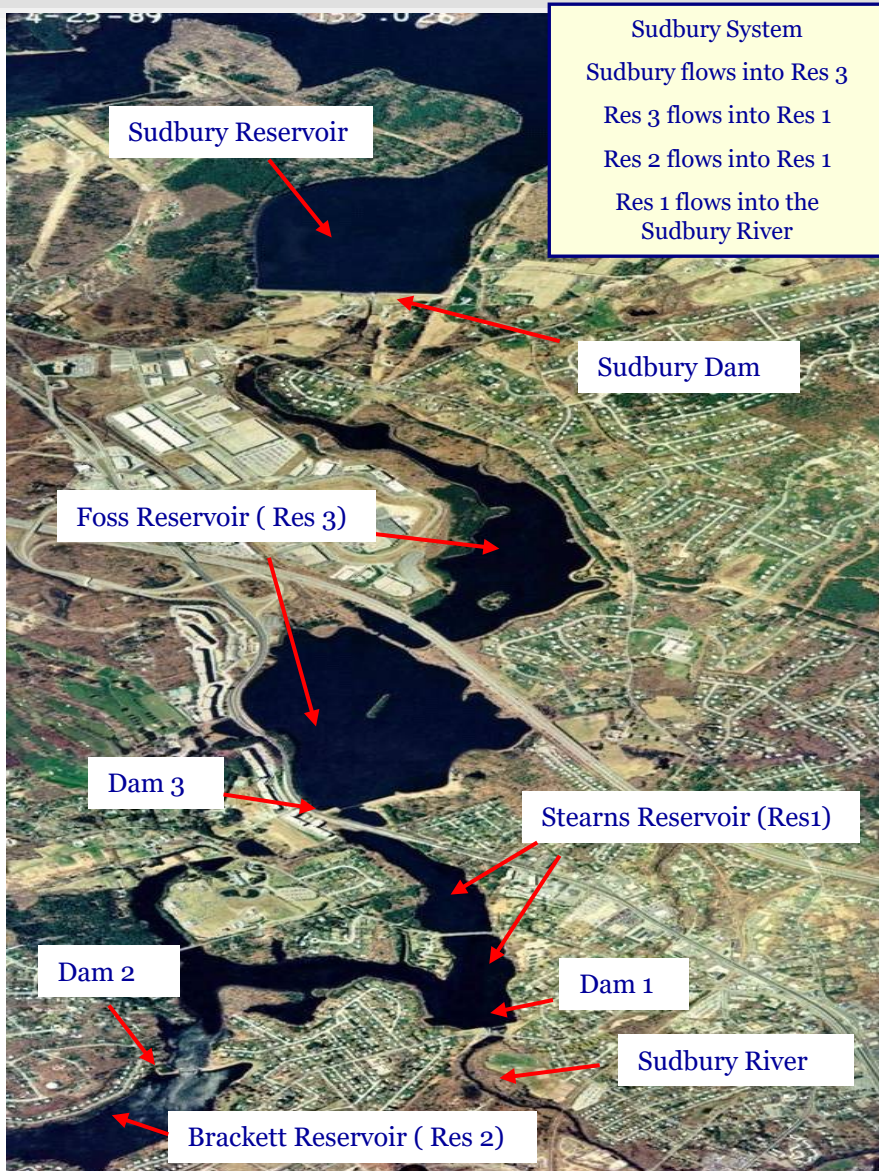
Daily Withdrawal

3 Day Average Comparisons for 2022- 2024



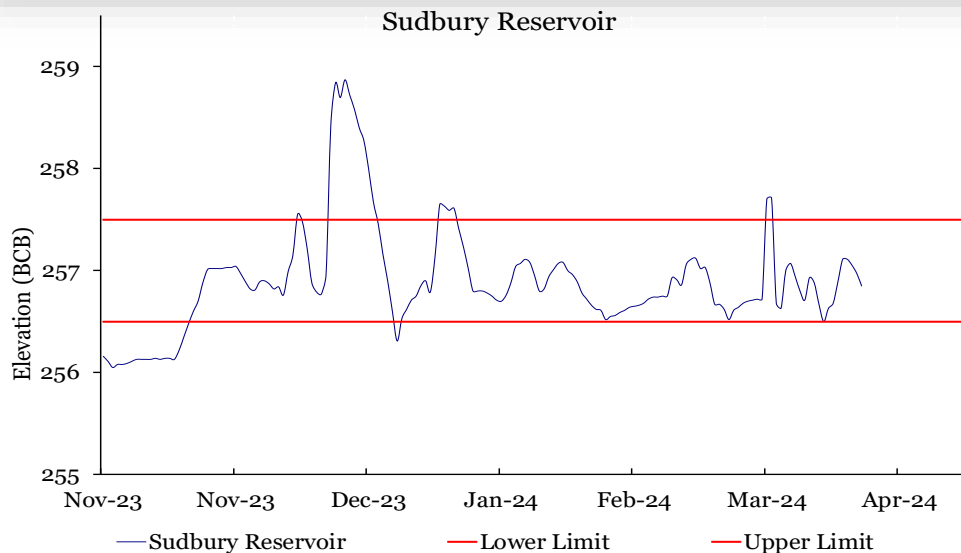


Sudbury & Foss Reservoirs





Sudbury & Foss Reservoirs



2023 Precipitation Total = 70.77"

December = 9.50"

From Dec 09 – 18 = 7.57" (10 days)

Sudbury Spillway Elevation = 259.00

Maximum Elevation = 258.87 - 12/22/2023



