

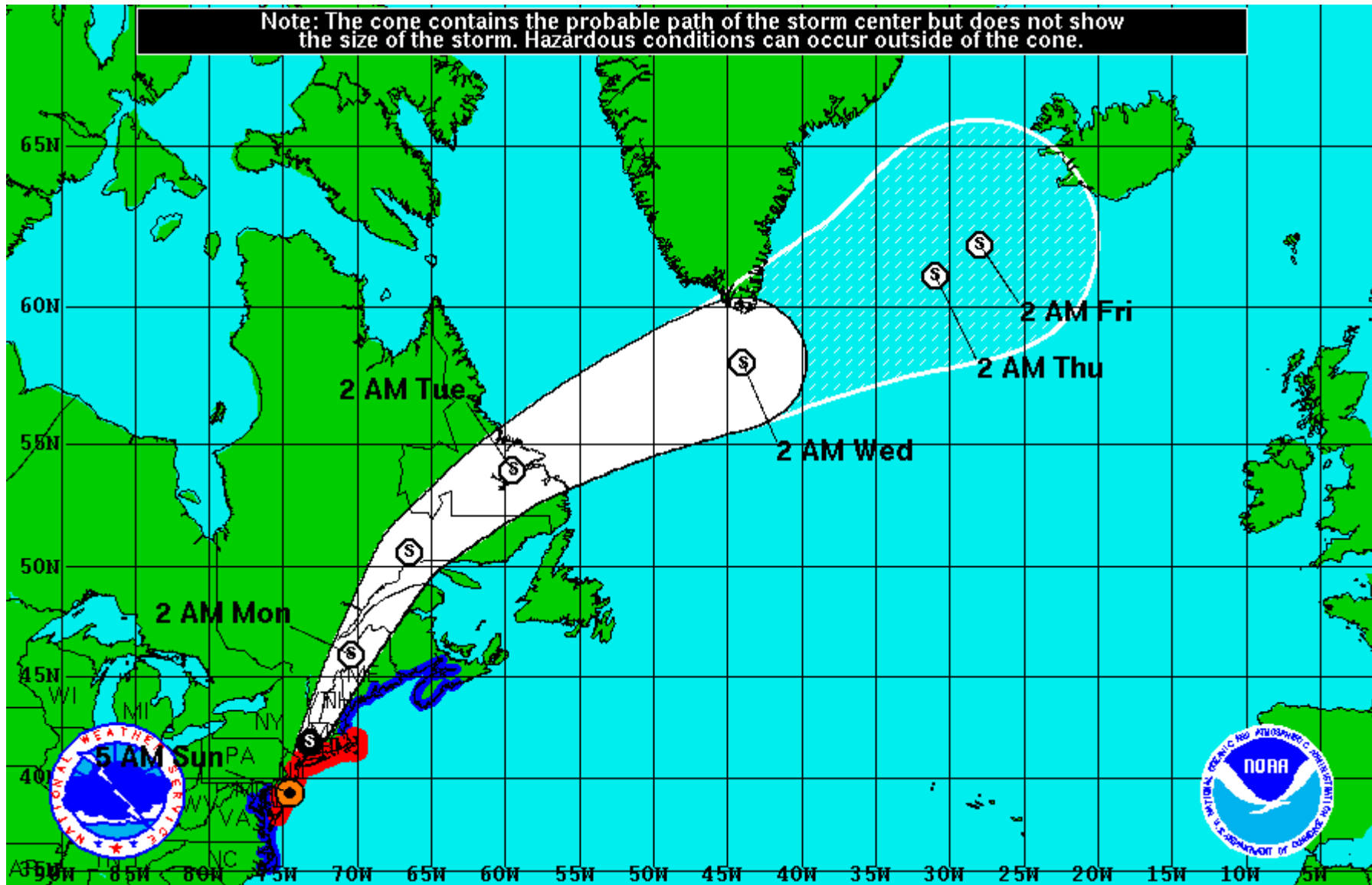
HURRICANE IRENE

CONFERENCE CALL BRIEFING SLIDES

Sunday August 28, 2011

8:30 AM

Note: The cone contains the probable path of the storm center but does not show the size of the storm. Hazardous conditions can occur outside of the cone.



Hurricane Irene
Sunday August 28, 2011
 5 AM EDT Advisory 32
 NWS National Hurricane Center

Current Information: ●
 Center Location 39.2 N 74.5 W
 Max Sustained Wind 75 mph
 Movement NNE at 18 mph

Forecast Positions:
 ● Tropical Cyclone ○ Post-Tropical
 Sustained Winds: D < 39 mph
 S 39-73 mph H 74-110 mph M > 110mph

Potential Track Area:
 ▽ Day 1-3 ▽ Day 4-5

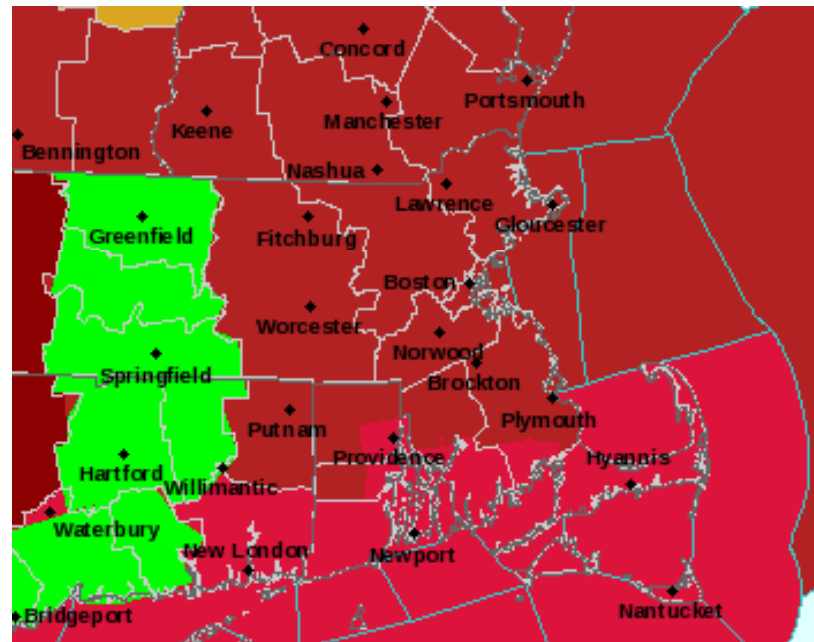
Watches:
 ■ Hurricane ■ Trop.Storm

Warnings:
 ■ Hurricane ■ Trop.Storm

HURRICANE IRENE

WATCHES/WARNINGS

- Hurricane Warning along south coast including all of Cape Cod and Islands
- Tropical Storm Warning Massachusetts east coast north of the Cape Cod Canal and all of interior
- Flood Warning Connecticut Valley region
- Tornado Watch southern Rhode Island and Connecticut



IRENE

TRACK/INTENSITY

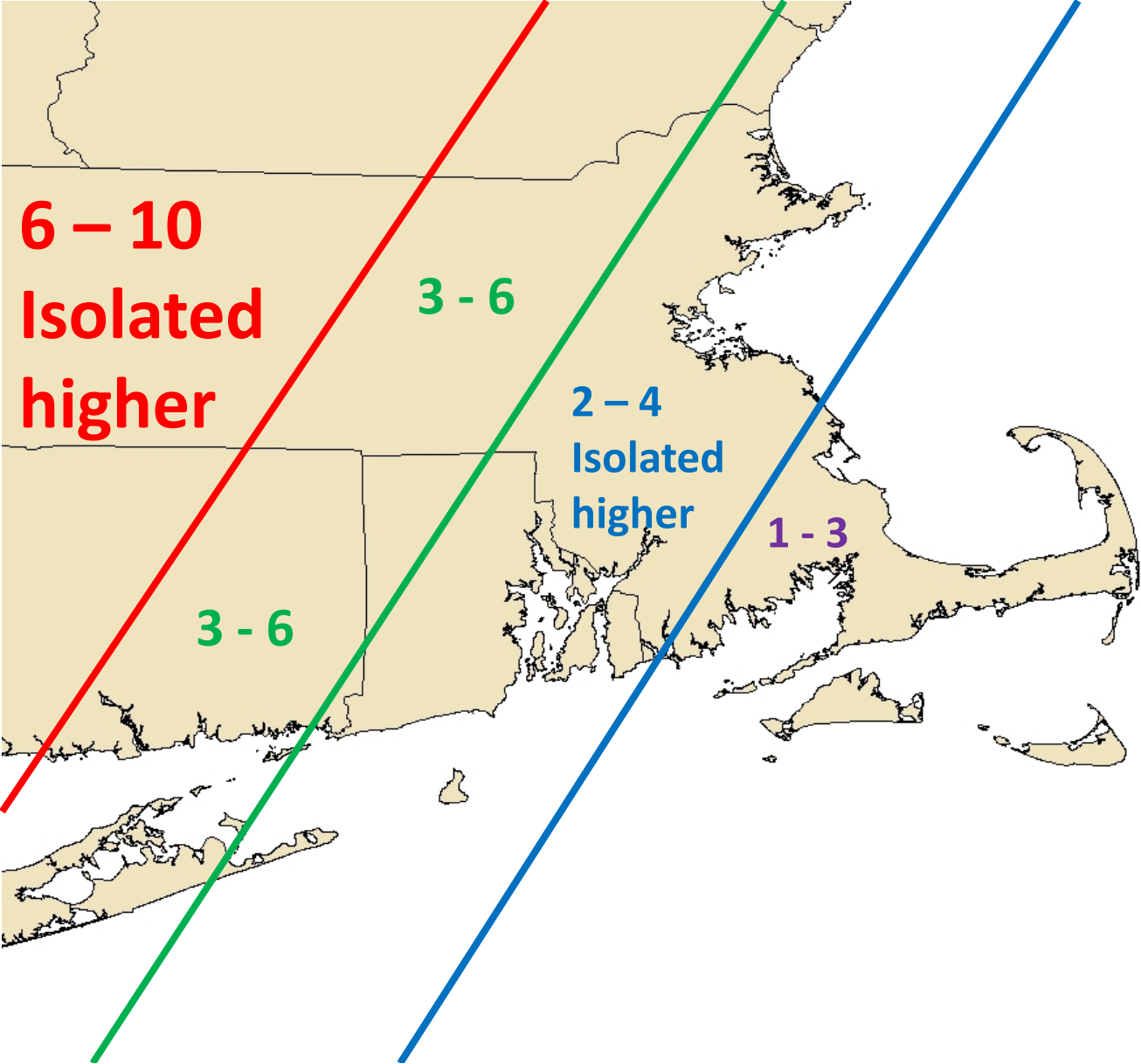
- Track:
 - New York City to western Connecticut to central New Hampshire
 - Over western Connecticut early this afternoon
- Intensity
 - Minimal Category 1 Hurricane as it heads to New York City and then a strong and especially large tropical storm as it heads across New England

HURRICANE IRENE

IMPACTS – HEAVY RAIN/FLOODING

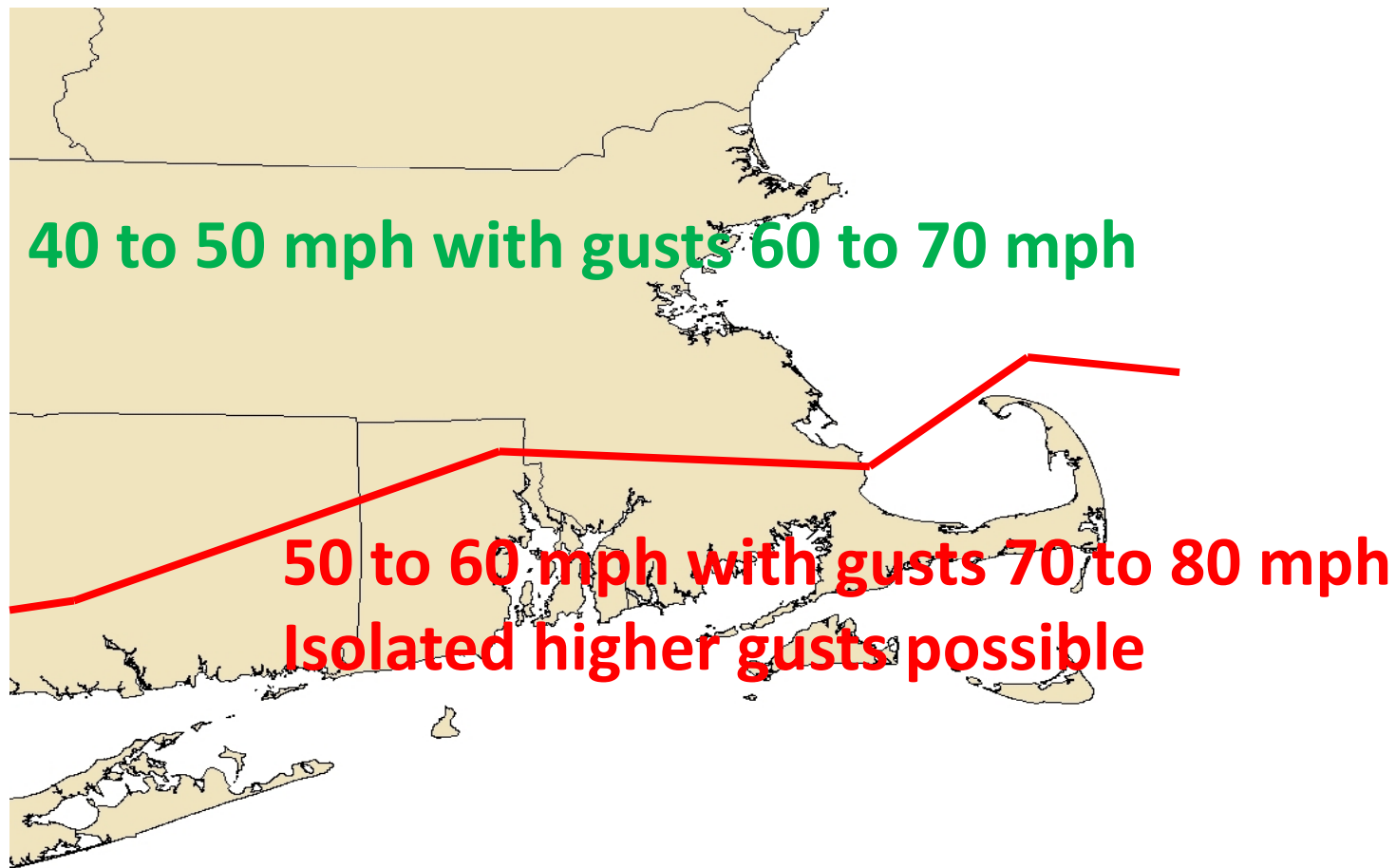
- Heavy rain
 - 6 to 10 inches Connecticut River Valley – Locally higher possible western Connecticut and over the Berkshires
 - 4 to 7 inches eastern Connecticut, northwest Rhode Island, central Massachusetts, and southwest New Hampshire
 - 2 to 4 inches rest of Rhode Island and Eastern Massachusetts but isolated higher amounts to 6 or 7 inches possible
- Flood Potential
 - Most of southern New England in a Flood Watch – Flood Warning CT Valley region
 - Widespread minor to moderate flooding across Connecticut River Valley
 - Major likely Hoosatic and possible lower Connecticut
 - Major small stream flooding possible western Connecticut and over the Berkshires
 - Rivers approaching or into minor flood across Rhode Island, central Massachusetts, and southwest New Hampshire – and localized urban and small stream flooding possible with heavy rain bands
- Timing
 - Heavy/intense rain bands until late this afternoon

RAINFALL (inches)



IRENE IMPACTS - WIND

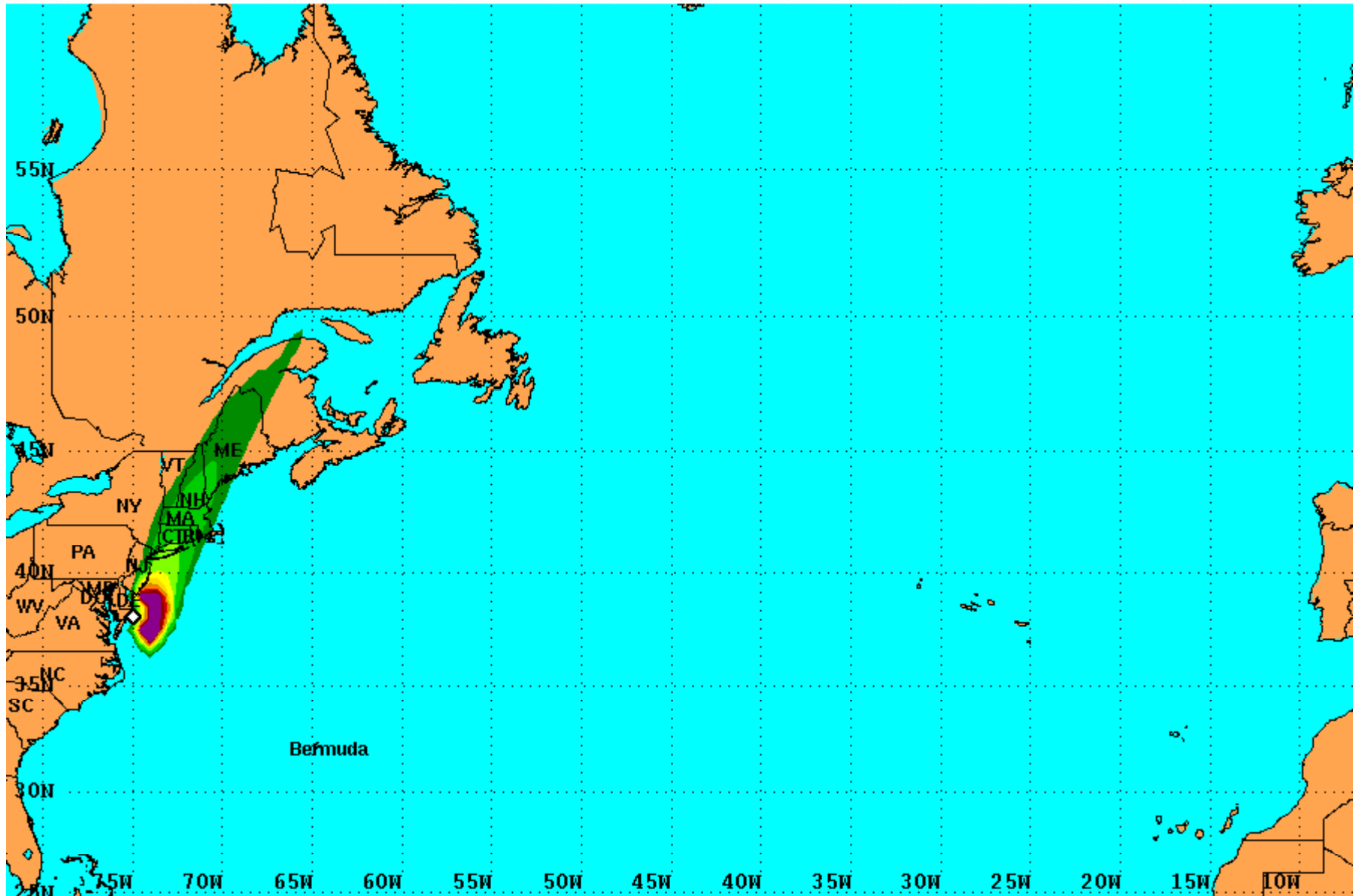
Periods of damaging winds until mid evening – gradually tapering off around and after midnight
There will still be strong wind gusts after rain tapers off late afternoon into evening
For most locations: E - SE wind morning to SE - S midday to S – SW afternoon to SW-W evening





Hurricane Force Wind Speed Probabilities

For the 120 hours (5 days) from 2 AM EDT Sun Aug 28 to 2 AM EDT Fri Sep 2



Probability of hurricane force surface winds (1-minute average ≥ 74 mph) from all tropical cyclones

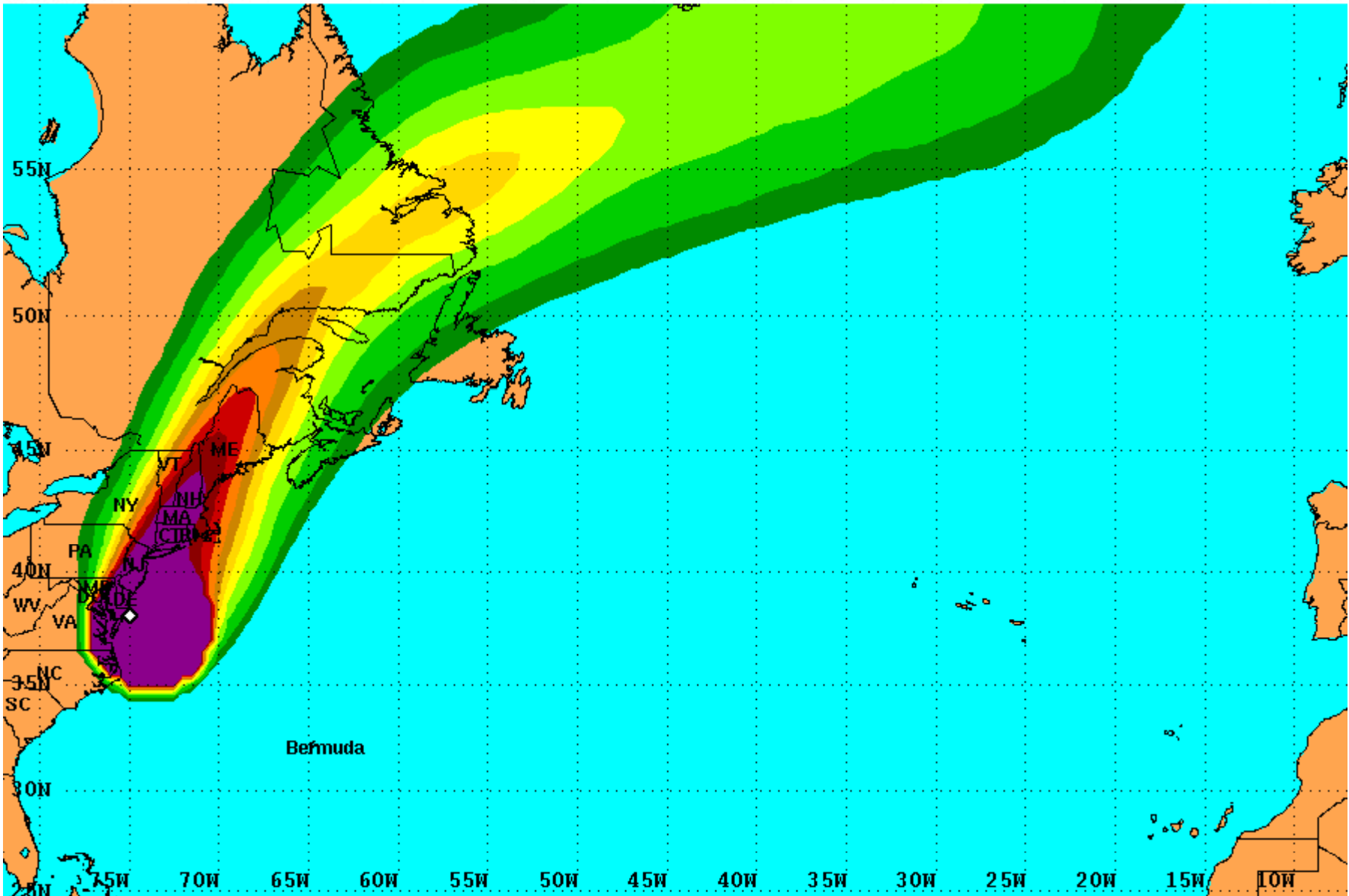
◇ indicates HURRICANE IRENE center location at 2 AM EDT Sun Aug 28 2011 (Forecast/Advisory #32)





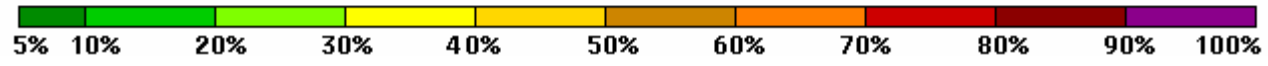
Tropical Storm Force Wind Speed Probabilities

For the 120 hours (5 days) from 2 AM EDT Sun Aug 28 to 2 AM EDT Fri Sep 2



Probability of tropical storm force surface winds (1-minute average ≥ 39 mph) from all tropical cyclones

◇ indicates HURRICANE IRENE center location at 2 AM EDT Sun Aug 28 2011 (Forecast/Advisory #32)

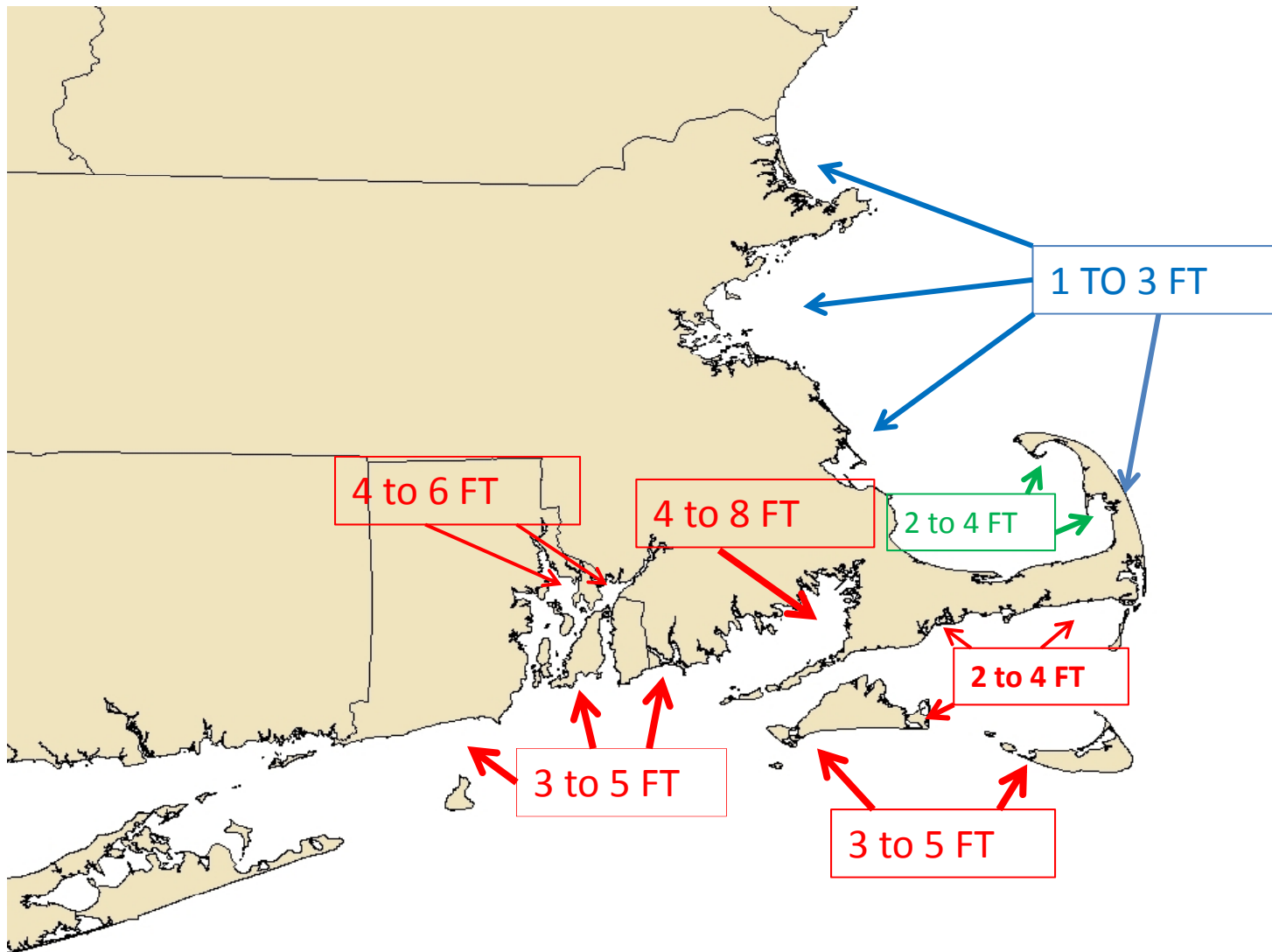


HURRICANE IRENE

IMPACTS – COASTAL FLOODING

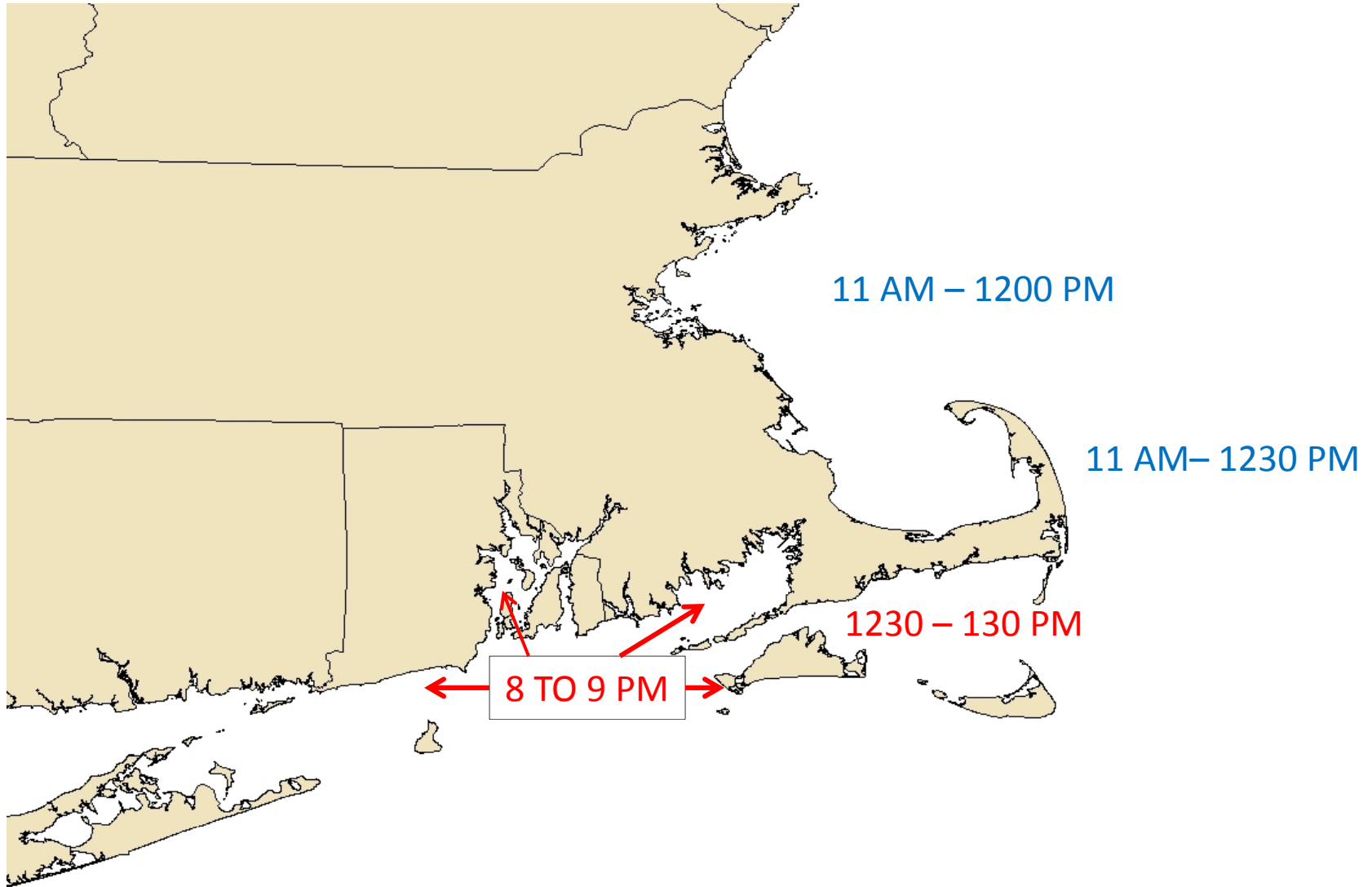
- Narragansett Bay
 - 3 to 6 foot surge on incoming evening high tide with moderate to major coastal flooding possible
- Buzzards Bay
 - 4 to 8 foot surge upper part on incoming evening high tide with moderate to major coastal flooding possible
- South side of Cape Cod and southeast portion Martha's Vineyard
 - Minor to moderate coastal flooding possible during midday/early afternoon high tide
- Extremely high surf along exposed Rhode Island and southern Massachusetts coasts including south sides of Nantucket, Martha's Vineyard, and Block Island will cause serious erosion and overwash
 - Moderate with pockets of major coastal flooding possible again with evening high tide

STORM SURGE POTENTIAL



10 to 20 foot waves along exposed south coast – serious overwash and erosion

SUNDAY HIGH TIDE TIMES



HURRICANE IRENE

IMPACTS – MARINE/BEACHES

- Seas
 - 25 to 35 feet off south coast
 - Up to 40 feet possible south of Block Island and Martha's Vineyard
 - Highest this afternoon and evening
 - Slowly subsiding late tonight and Monday
- High risk of rip currents through Monday for ocean exposed beaches
- Very significant beach erosion likely south facing exposed beaches

CONFERENCE CALL SCHEDULE

DAY

- 8:30 AM Southern New England area
– covered by Taunton Weather Forecast Office (BOX)
- 11:30 AM Rhode Island
- 12:30 PM Massachusetts
- 1:15 PM Connecticut (if needed)
- 2:15 PM Southern New England area (if needed)

CONCLUDING THOUGHTS

- **Irene moving north along New Jersey coast and hanging on as Category 1 storm**
- **Irene remains an usually large storm**
 - Inland flooding – especially serious for Connecticut River Valley area
 - Large swath of wind damage (most significant in many years)
 - Potential for serious storm surge flooding along RI and MA south coast – especially this evening's high tide when winds will be from the southwest
- Winds diminishing below tropical storm force gusts by around midnight